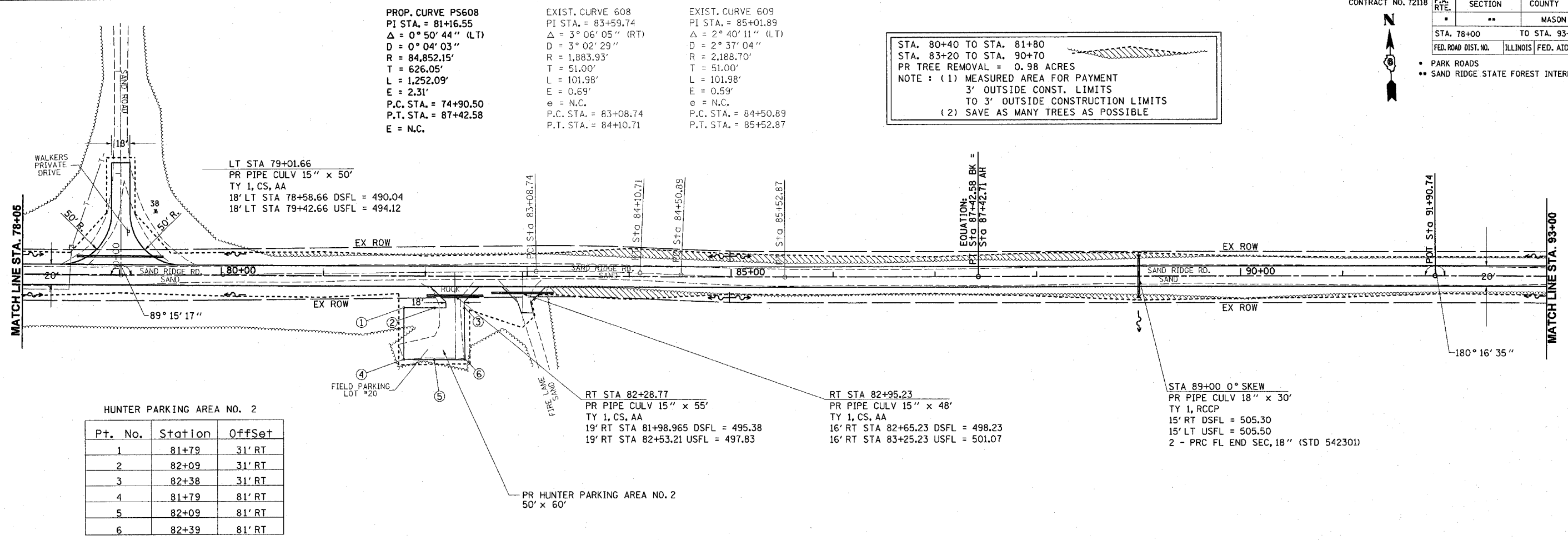


**PROP. CURVE PS608**  
 PI STA. = 81+16.55  
 $\Delta = 0^\circ 50' 44''$  (LT)  
 $D = 0^\circ 04' 03''$   
 $R = 84,852.15'$   
 $T = 626.05'$   
 $L = 1,252.09'$   
 $E = 2.31'$   
 P.C. STA. = 74+90.50  
 P.T. STA. = 87+42.58  
 $E = N.C.$

**EXIST. CURVE 608**  
 PI STA. = 83+59.74  
 $\Delta = 3^\circ 06' 05''$  (RT)  
 $D = 3^\circ 02' 29''$   
 $R = 1,883.93'$   
 $T = 51.00'$   
 $L = 101.98'$   
 $E = 0.69'$   
 $e = N.C.$   
 P.C. STA. = 83+08.74  
 P.T. STA. = 84+10.71

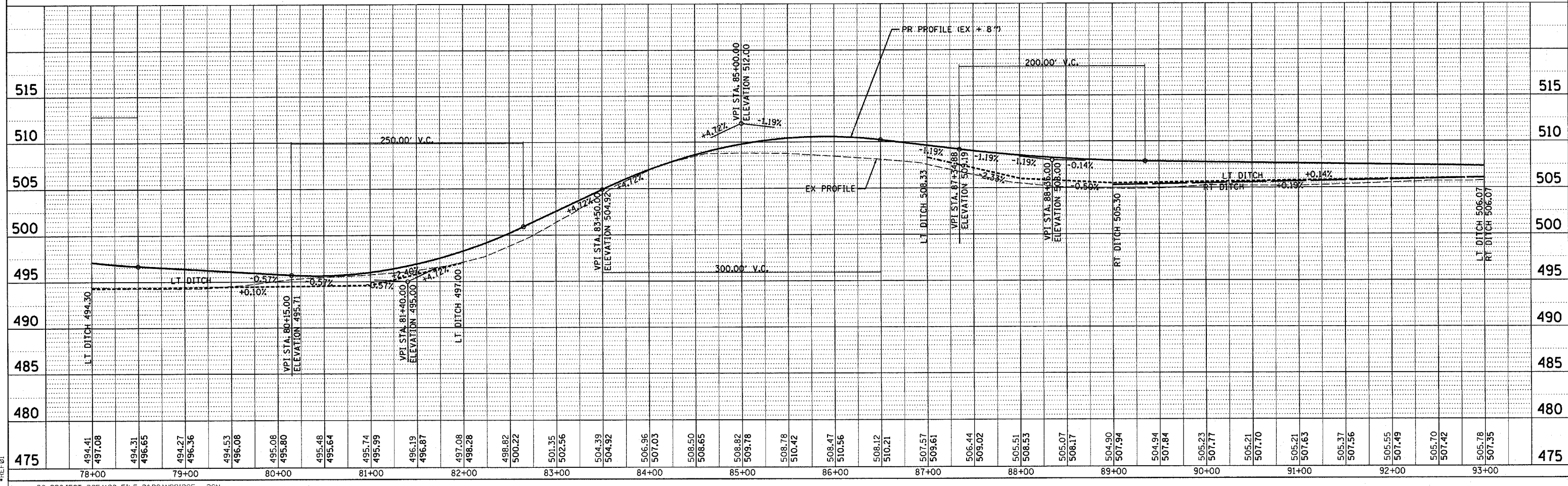
**EXIST. CURVE 609**  
 PI STA. = 85+01.89  
 $\Delta = 2^\circ 40' 11''$  (LT)  
 $D = 2^\circ 37' 04''$   
 $R = 2,188.70'$   
 $T = 51.00'$   
 $L = 101.98'$   
 $E = 0.59'$   
 $e = N.C.$   
 P.C. STA. = 84+50.89  
 P.T. STA. = 85+52.87

STA. 80+40 TO STA. 81+80  
 STA. 83+20 TO STA. 90+70  
 PR TREE REMOVAL = 0.98 ACRES  
 NOTE: (1) MEASURED AREA FOR PAYMENT  
 3' OUTSIDE CONST. LIMITS  
 TO 3' OUTSIDE CONSTRUCTION LIMITS  
 (2) SAVE AS MANY TREES AS POSSIBLE



HUNTER PARKING AREA NO. 2

Pt. No.	Station	Offset
1	81+79	31' RT
2	82+09	31' RT
3	82+38	31' RT
4	81+79	81' RT
5	82+09	81' RT
6	82+39	81' RT



DATE	BY	REVISION

DATE	BY	REVISION

et:\projects\16654196\p&psandridge.dgn  
 2/9/2004  
 -REF01