

CONTRACT NO. 72118		F.A. RTE.	SECTION	COUNTY	TOTAL SHEETS	SHEET NO.
		..	MASON		30	30
STA. 123+00		TO STA. 138+00				
FED. ROAD DIST. NO.		ILLINOIS FED. AID PROJECT				
<ul style="list-style-type: none"> * PARK ROADS ** SAND RIDGE STATE FOREST INTERNAL ROADS 2004 						

PROP. CURVE PSC11
 PI STA. = 125+94.85
 $\Delta = 1^\circ 38' 47''$ (LT)
 $D = 0^\circ 49' 24''$
 $R = 6,959.17'$
 $T = 100.00'$
 $L = 199.99'$
 $E = 0.72'$
 P.C. STA. = 124+94.85
 P.T. STA. = 126+94.83

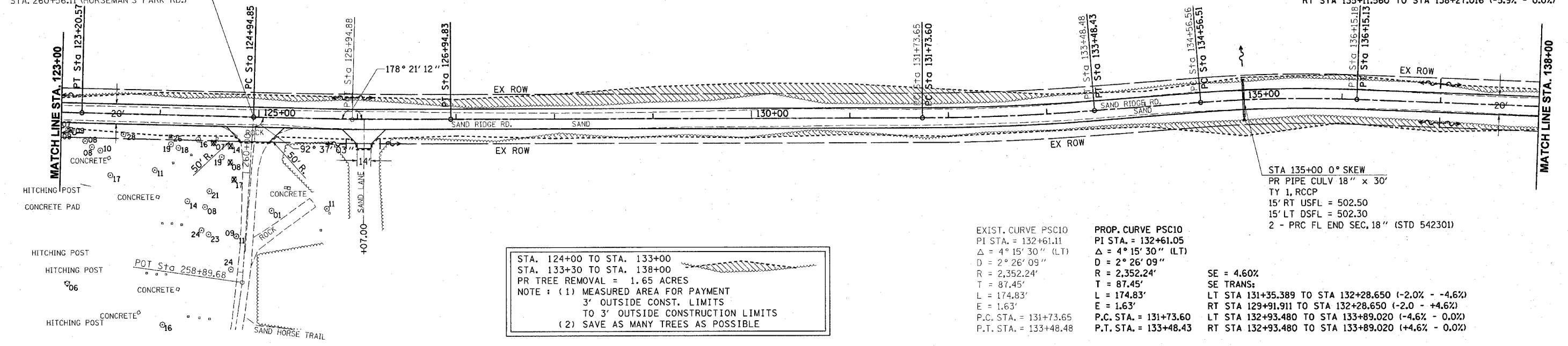
SE = 2.10%
 SE TRANS:
 LT STA 123+84.830 TO STA 125+49.830 (-2.0% - -2.1%)
 RT STA 122+27.687 TO STA 125+49.830 (-2.0 - +2.1%)
 LT STA 126+39.820 TO STA 128+04.820 (-2.1% - -2.0%)
 RT STA 126+39.820 TO STA 129+61.963 (+2.1% - -2.0%)

EXIST. CURVE PSC11
 PI STA. = 135+35.96
 $\Delta = 6^\circ 34' 14''$ (RT)
 $D = 4^\circ 08' 32''$
 $R = 1,383.17'$
 $T = 79.40'$
 $L = 158.62'$
 $E = 2.28'$
 P.C. STA. = 134+56.56
 P.T. STA. = 136+15.18

PROP. CURVE PSC11
 PI STA. = 135+35.91
 $\Delta = 6^\circ 34' 14''$ (RT)
 $D = 4^\circ 08' 32''$
 $R = 1,383.17'$
 $T = 79.40'$
 $L = 158.62'$
 $E = 2.28'$
 P.C. STA. = 134+56.51
 P.T. STA. = 136+15.13

SE = 5.90%
 SE TRANS:
 LT STA 133+89.020 TO STA 135+11.560 (0.0% - +5.9%)
 RT STA 133+89.020 TO STA 135+11.560 (0.0 - -5.9%)
 LT STA 135+11.560 TO STA 138+27.016 (+5.9% - 0.0%)
 RT STA 135+11.560 TO STA 138+27.016 (-5.9% - 0.0%)

STA. 124+94.78 (EXIST SAND RIDGE RD.)
 STA. 124+94.73 (PROP SAND RIDGE RD.)
 STA. 260+56.11 (HORSEMAN'S PARK RD.)



STA. 124+00 TO STA. 133+00
 STA. 133+30 TO STA. 138+00
 PR TREE REMOVAL = 1.65 ACRES
 NOTE: (1) MEASURED AREA FOR PAYMENT
 3' OUTSIDE CONST. LIMITS
 TO 3' OUTSIDE CONSTRUCTION LIMITS
 (2) SAVE AS MANY TREES AS POSSIBLE

EXIST. CURVE PSC10
 PI STA. = 132+61.11
 $\Delta = 4^\circ 15' 30''$ (LT)
 $D = 2^\circ 26' 09''$
 $R = 2,352.24'$
 $T = 87.45'$
 $L = 174.83'$
 $E = 1.63'$
 P.C. STA. = 131+73.65
 P.T. STA. = 133+48.48

PROP. CURVE PSC10
 PI STA. = 132+61.05
 $\Delta = 4^\circ 15' 30''$ (LT)
 $D = 2^\circ 26' 09''$
 $R = 2,352.24'$
 $T = 87.45'$
 $L = 174.83'$
 $E = 1.63'$
 P.C. STA. = 131+73.60
 P.T. STA. = 133+48.43

SE = 4.60%
 SE TRANS:
 LT STA 131+35.389 TO STA 132+28.650 (-2.0% - -4.6%)
 RT STA 129+91.911 TO STA 132+28.650 (-2.0 - +4.6%)
 LT STA 132+93.480 TO STA 133+89.020 (-4.6% - 0.0%)
 RT STA 132+93.480 TO STA 133+89.020 (+4.6% - 0.0%)

STA 135+00 0° SKEW
 PR PIPE CULV 18" x 30'
 TY 1, RCCP
 15' RT USFL = 502.50
 15' LT DSFL = 502.30
 2 - PRC FL END SEC. 18" (STD 542301)

DATE	BY
NO.	NO.
DATE	BY
NO.	NO.

DATE	BY
NO.	NO.
DATE	BY
NO.	NO.

