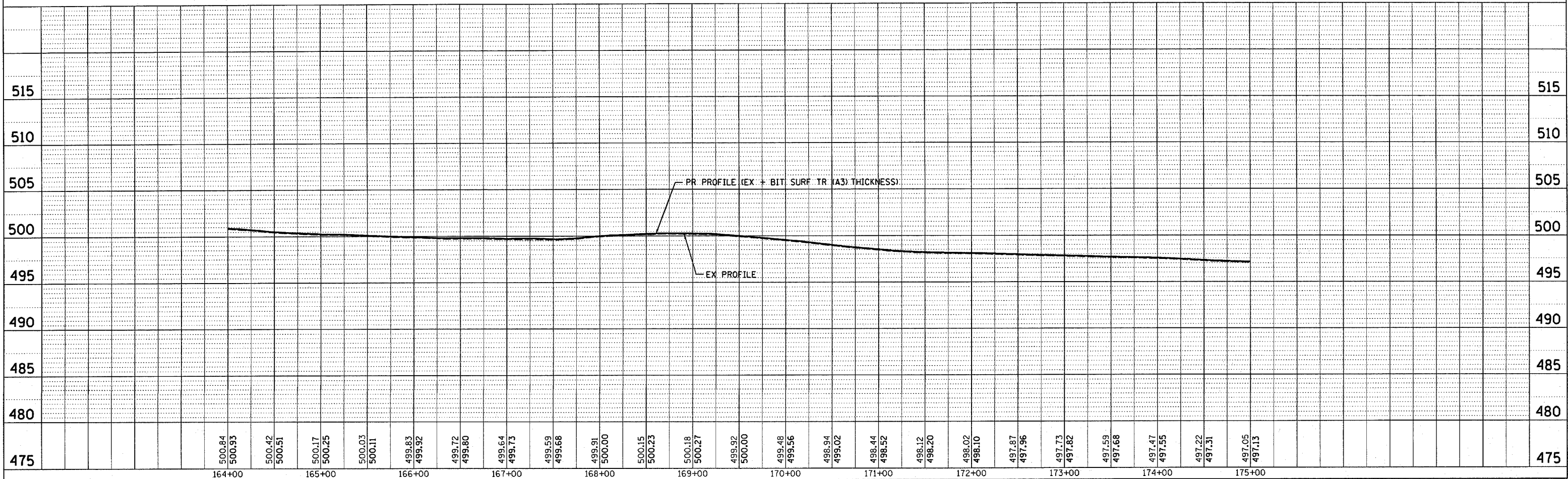
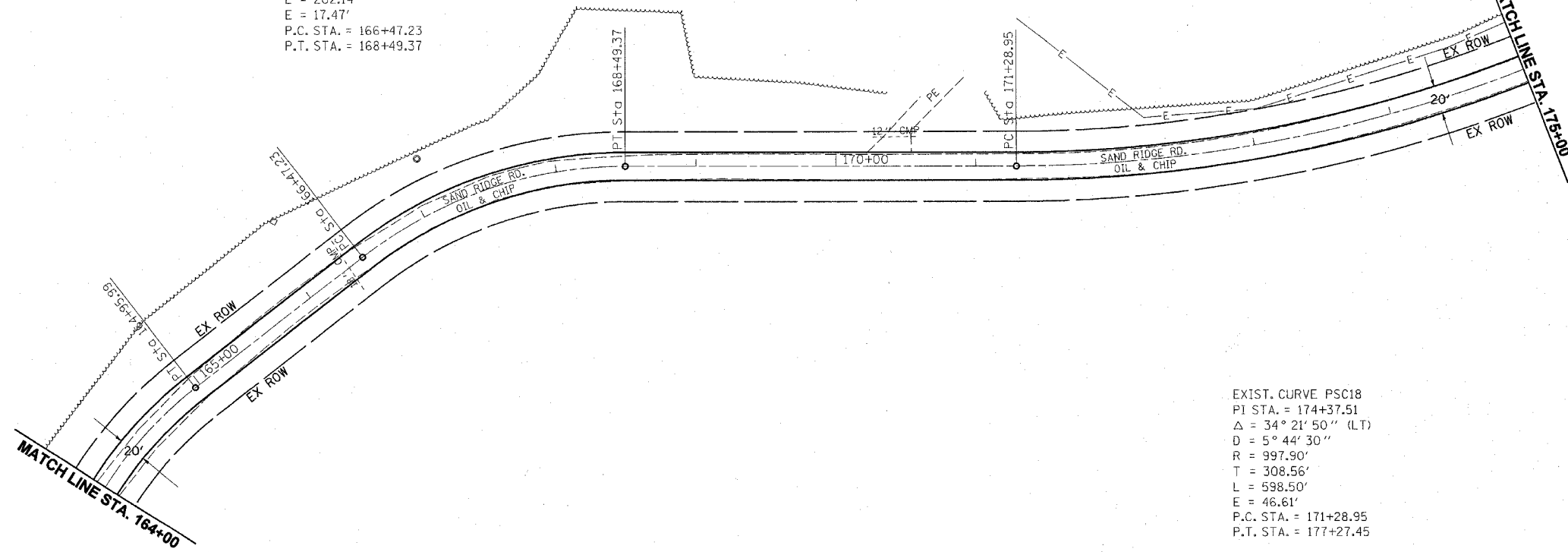


- PARK ROADS
- SAND RIDGE STATE FOREST INTERNAL ROADS 2004

EXIST. CURVE PSC17
 PI STA. = 167+52.13
 $\Delta = 37^\circ 49' 13''$ (RT)
 $D = 18^\circ 42' 36''$
 $R = 306.23'$
 $T = 104.91'$
 $L = 202.14'$
 $E = 17.47'$
 P.C. STA. = 166+47.23
 P.T. STA. = 168+49.37

EXIST. CURVE PSC18
 PI STA. = 174+37.51
 $\Delta = 34^\circ 21' 50''$ (LT)
 $D = 5^\circ 44' 30''$
 $R = 997.90'$
 $T = 308.56'$
 $L = 598.50'$
 $E = 46.61'$
 P.C. STA. = 171+28.95
 P.T. STA. = 177+27.45



PLAN	DATE
SURVEYED	
ALIGNED	
CHECKED	
BY	
NO.	

PROFILE	DATE
PLotted	
CHECKED	
BY	
NO.	

c:\projects\6554196\p&psandr\dgdg.dgn
 2/5/2004
 *REF 01