

CONTRACT NO. 72118	F.A. RTE.	SECTION	COUNTY	TOTAL SHEETS	SHEET NO.
			MASON	86	34
STA. 175+00		TO STA. 185+00			
FED. ROAD DIST. NO.	ILLINOIS	FED. AID PROJECT			

- PARK ROADS
- SAND RIDGE STATE FOREST INTERNAL ROADS 2004

EXIST. CURVE PSC19
 PI STA. = 178+21.61
 $\Delta = 25^\circ 16' 10''$ (LT)
 $D = 24^\circ 01' 41''$
 $R = 238.45'$
 $T = 53.45'$
 $L = 105.17'$
 $E = 5.92'$
 P.C. STA. = 177+68.15
 P.T. STA. = 178+73.32

STA 176+70.00 (0° SKEW)
 PR PIPE CULV 18" x 30"
 TY 1, CS/AA
 15' LT DSFL = 494.63
 15' LT USFL = 494.74
 2 - PRC FL END SEC. 18" (STD 542301)

STA 177+20.06 (EXIST SAND RIDGE RD.) =
 STA. 177+20.00 (PROP SAND RIDGE RD.)
 STA 300+89.07 SITE OFFICE ROAD

EXIST. CURVE R635
 PI STA. = 302+59.64
 $\Delta = 21^\circ 36' 10''$ (LT)
 $D = 14^\circ 51' 12''$
 $R = 385.74'$
 $T = 73.59'$
 $L = 145.44'$
 $E = 6.96'$
 P.C. STA. = 301+86.04
 P.T. STA. = 303+31.48

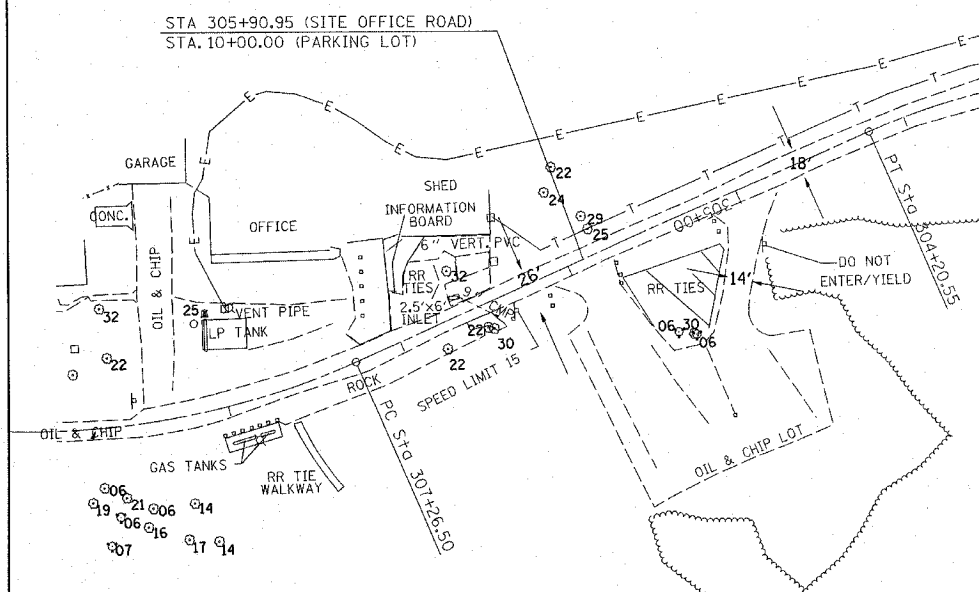
EXIST. CURVE 102
 PI STA. = 300+51.29
 $\Delta = 62^\circ 05' 47''$ (RT)
 $D = 114^\circ 35' 30''$
 $R = 50.00'$
 $T = 30.10'$
 $L = 54.19'$
 $E = 8.36'$
 P.C. STA. = 300+21.19
 P.T. STA. = 300+75.38

SAND RIDGE STATE FOREST HEADQUARTERS

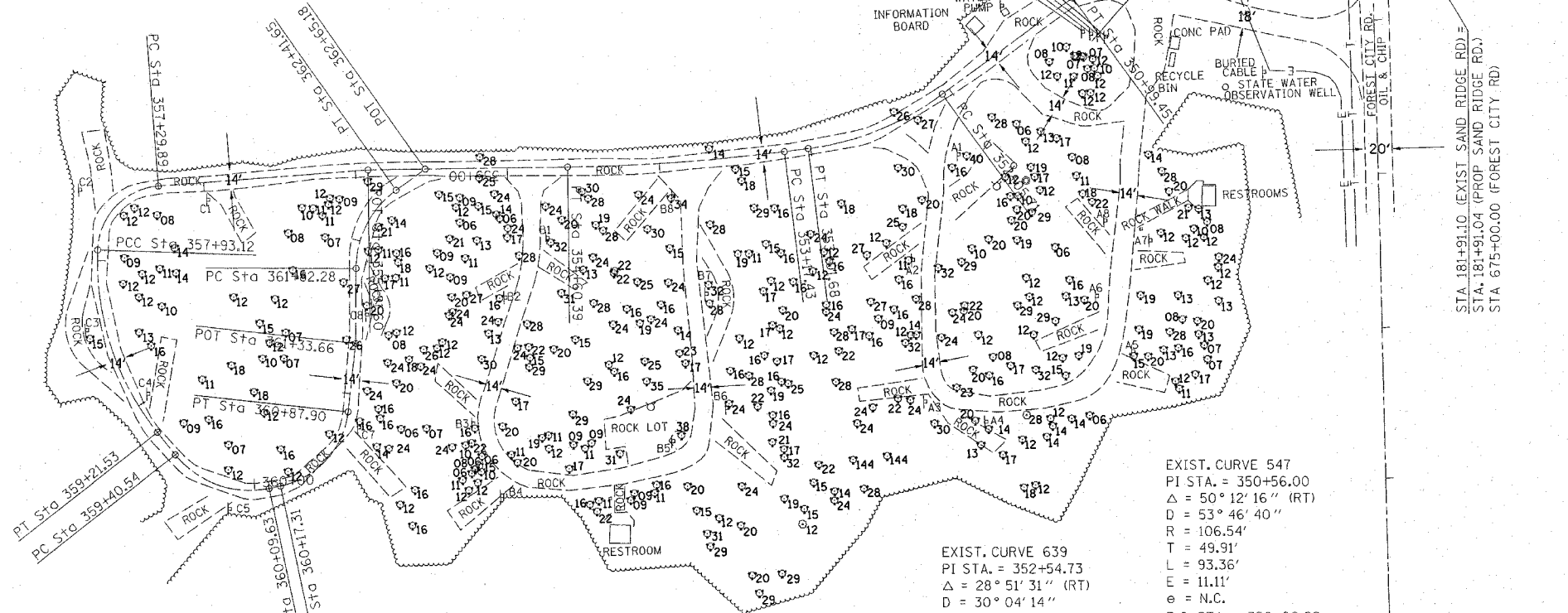
STA 183+39.47 (EXIST SAND RIDGE RD.) =
 STA. 183+39.41 (PROP SAND RIDGE RD.)
 STA 350+00.00 (PINE CAMPGROUND RD.)

LIMITS OF IMPROVEMENT
 STA 183+61.86 (EXIST SAND RIDGE RD.) =
 STA. 183+61.80 (PROP SAND RIDGE RD.)
 STA 400+00.00 (CACTUS DR)
 STA. 185+50.12
 END OF IMPROVEMENT
 SAND RIDGE RD

STA 305+90.95 (SITE OFFICE ROAD)
 STA. 10+00.00 (PARKING LOT)



EXIST. CURVE R636
 PI STA. = 307+35.87
 $\Delta = 25^\circ 26' 58''$ (RT)
 $D = 13^\circ 08' 37''$
 $R = 435.93'$
 $T = 98.44'$
 $L = 193.63'$
 $E = 10.98'$
 P.C. STA. = 306+37.43
 P.T. STA. = 308+31.06



EXIST. CURVE 547
 PI STA. = 350+56.00
 $\Delta = 50^\circ 12' 16''$ (RT)
 $D = 53^\circ 46' 40''$
 $R = 106.54'$
 $T = 49.91'$
 $L = 93.36'$
 $E = 11.11'$
 $e = N.C.$
 P.C. STA. = 350+06.09
 P.T. STA. = 350+99.45

EXIST. CURVE 639
 PI STA. = 352+54.73
 $\Delta = 28^\circ 51' 31''$ (RT)
 $D = 30^\circ 04' 14''$
 $R = 190.54'$
 $T = 49.03'$
 $L = 95.97'$
 $E = 6.21'$
 $e = N.C.$
 P.C. STA. = 352+05.71
 P.T. STA. = 353+01.68

EXIST. CURVE 643
 PI STA. = 358+60.10
 $\Delta = 40^\circ 11' 48''$ (LT)
 $D = 31^\circ 18' 20''$
 $R = 183.02'$
 $T = 66.97'$
 $L = 128.40'$
 $E = 11.87'$
 $e = N.C.$
 P.C. STA. = 357+93.13
 P.T. STA. = 359+21.53

EXIST. CURVE 642
 PI STA. = 357+68.71
 $\Delta = 83^\circ 55' 05''$ (LT)
 $D = 132^\circ 42' 11''$
 $R = 43.18'$
 $T = 38.82'$
 $L = 63.24'$
 $E = 14.89'$
 $e = N.C.$
 P.C. STA. = 357+29.89
 P.T. STA. = 357+93.12

EXIST. CURVE 644
 PI STA. = 359+79.12
 $\Delta = 63^\circ 32' 23''$ (LT)
 $D = 91^\circ 58' 17''$
 $R = 62.30'$
 $T = 38.58'$
 $L = 69.09'$
 $E = 10.98'$
 $e = N.C.$
 P.C. STA. = 359+40.54
 P.T. STA. = 360+09.63

EXIST. CURVE 645
 PI STA. = 360+58.10
 $\Delta = 71^\circ 51' 21''$ (LT)
 $D = 101^\circ 47' 52''$
 $R = 56.28'$
 $T = 40.78'$
 $L = 70.59'$
 $E = 13.22'$
 $e = N.C.$
 P.C. STA. = 360+17.31
 P.T. STA. = 360+87.90

EXIST. CURVE 646
 PI STA. = 362+14.41
 $\Delta = 54^\circ 20' 18''$ (RT)
 $D = 91^\circ 31' 58''$
 $R = 62.60'$
 $T = 32.13'$
 $L = 59.37'$
 $E = 7.76'$
 $e = N.C.$
 P.C. STA. = 361+82.28
 P.T. STA. = 362+41.65

EXIST. CURVE 640
 PI STA. = 353+88.99
 $\Delta = 6^\circ 29' 06''$ (RT)
 $D = 4^\circ 32' 10''$
 $R = 1,263.11'$
 $T = 71.56'$
 $L = 142.96'$
 $E = 2.03'$
 $e = N.C.$
 P.C. STA. = 353+17.43
 P.T. STA. = 354+60.39

REVISIONS	
NAME	DATE

ILLINOIS DEPARTMENT OF TRANSPORTATION

SAND RIDGE ROAD

SCALE: VERT. _____
 HORIZ. _____

DATE _____

DRAWN BY _____
 CHECKED BY _____

c:\projects\d654196\p&psandridge.dgn
 2/6/2004
 REF:01