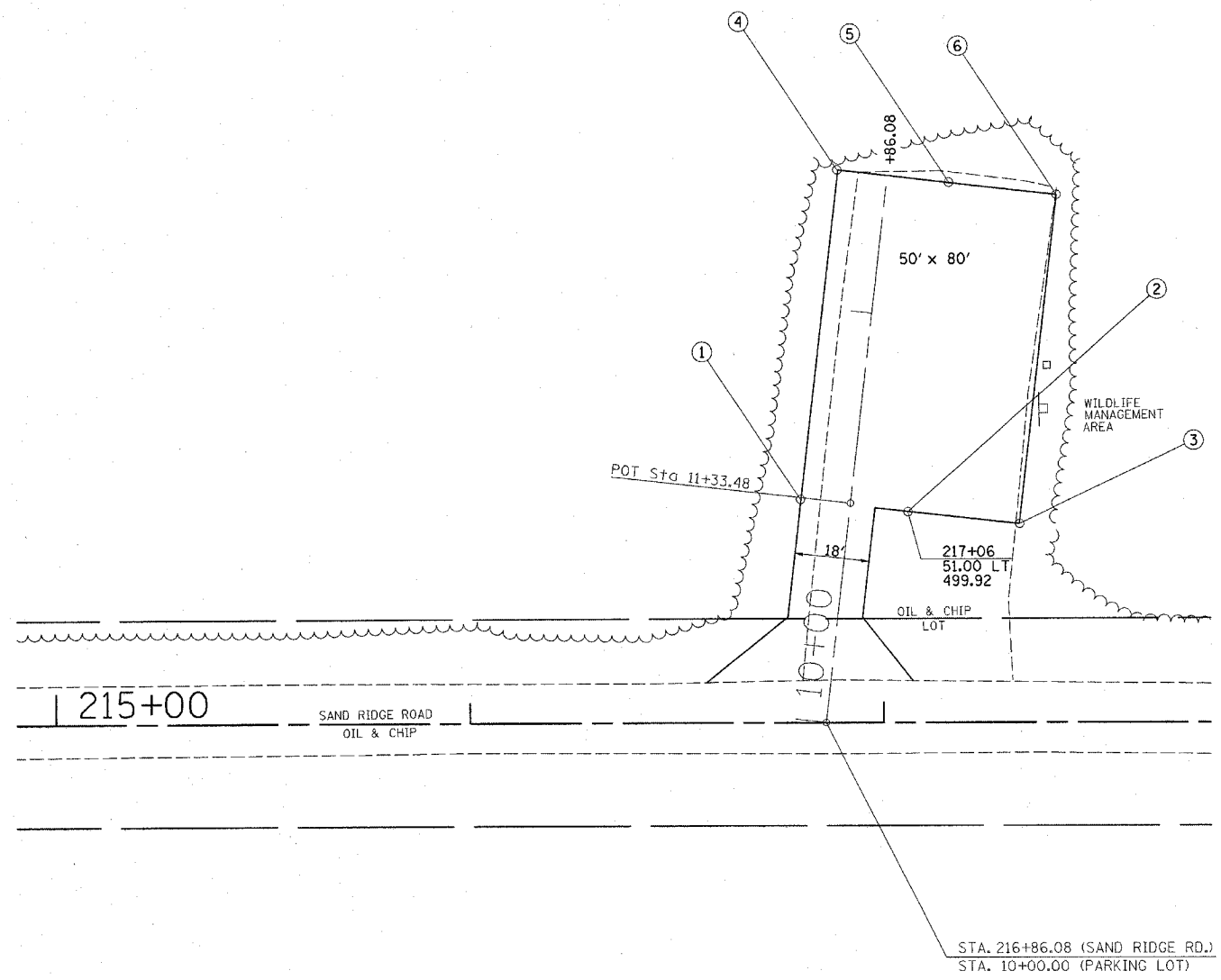


CONTRACT #72118

F.A. RTE.	SECTION	COUNTY	TOTAL SHEETS	SHEET NO.
*	**	MASON	86	38

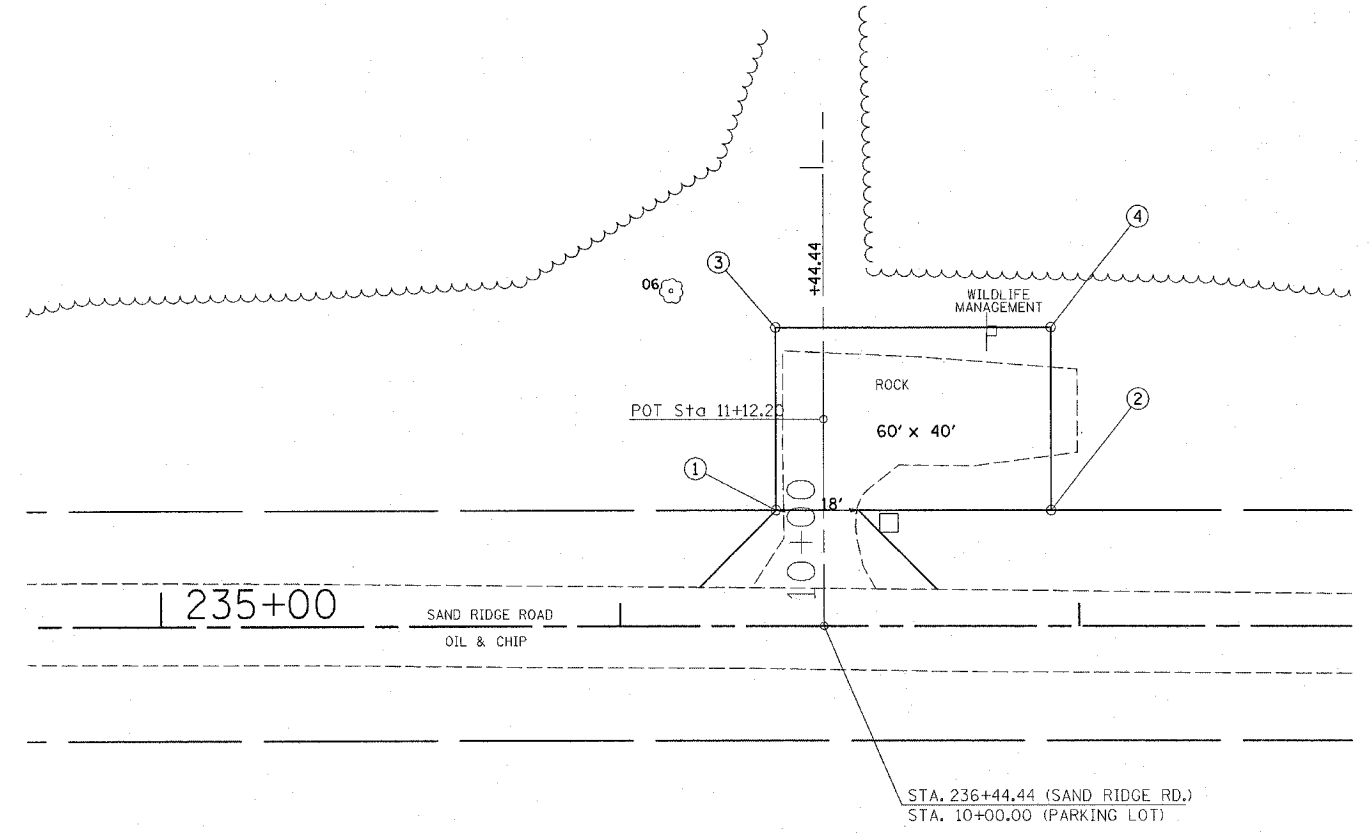
STA.	TO STA.
FED. ROAD DIST. NO.	ILLINOIS FED. AID PROJECT

- PARK ROADS
- SAND RIDGE STATE FOREST INTERNAL ROADS 2004



HUNTER PARKING AREA NO. 5

Pt. No.	Station	Offset
1	216+80	54' LT
2	217+06	51' LT
3	217+33	48' LT
4	216+89	134' LT
5	217+16	131' LT
6	217+42	128' LT



HUNTER PARKING AREA NO. 6

Pt. No.	Station	Offset
1	236+34	25' LT
2	236+94	25' LT
3	236+34	65' LT
4	236+94	65' LT

REVISIONS	
NAME	DATE

ILLINOIS DEPARTMENT OF TRANSPORTATION  
**PARKING AREA DETAILS**  
**SAND RIDGE ROAD**

SCALE: VERT. \_\_\_\_\_  
 HORIZ. \_\_\_\_\_  
 DATE \_\_\_\_\_  
 DRAWN BY \_\_\_\_\_  
 CHECKED BY \_\_\_\_\_

c:\projects\d654196\pl.sh.20.dgn  
 2/9/2004  
 REF:01