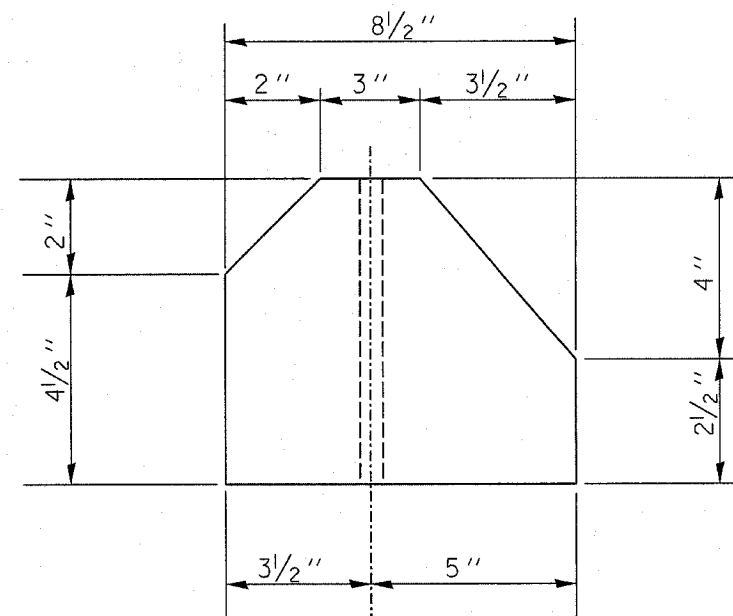
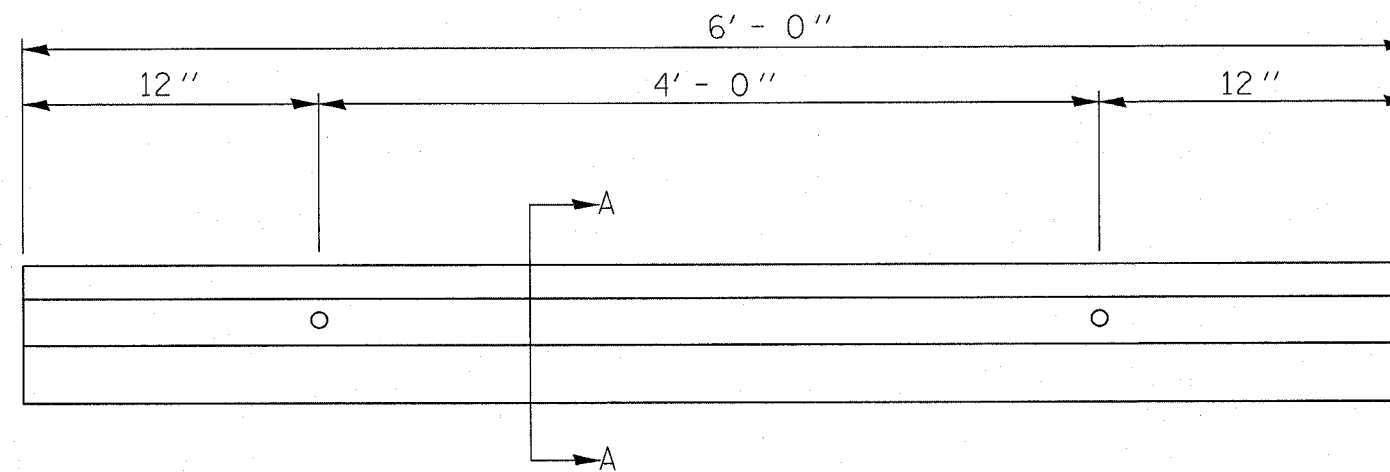


F.A. RTE.	SECTION	COUNTY	TOTAL SHEETS	SHEET NO.
*	**	MASON	86	54
STA.		TO STA.		
FED. ROAD DIST. NO.	ILLINOIS	FED. AID PROJECT		

- PARK ROADS
- SAND RIDGE STATE FOREST INTERNAL ROADS 2004



Ø 1" DIA. HOLE

SECTION A-A

EX & PR BUMPER BLOCKS TO BE FASTENED TO PR BIT. SURF. W/ 3/4" Ø x 24" STEEL SPIKES W/ CAPS APPROVED BY THE ENGINEER

PRECAST CONCRETE CAR BUMPER DETAIL

ILLINOIS DEPARTMENT OF TRANSPORTATION

PRECAST CONCRETE CAR BUMPER DETAIL  
SAND RIDGE STATE FOREST

SCALE:  
DATE:

DRAWN BY: MDH  
CHECKED BY: