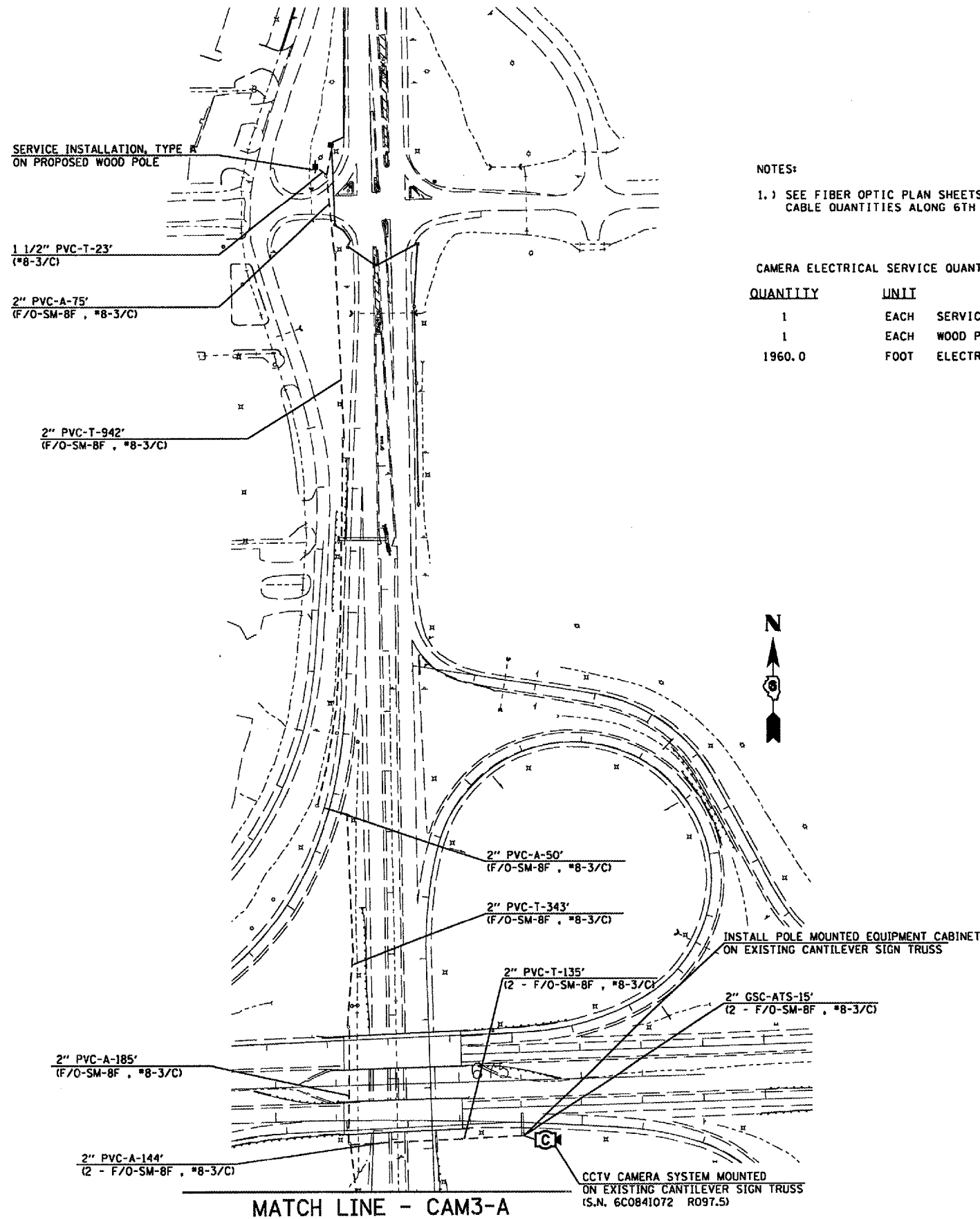


F.A. RTE.	SECTION	COUNTY	TOTAL SHEETS	SHEET NO.
D-6	ITS #1	SANGAMON	8	8
STA.		TO STA.		
FED. ROAD DIST. NO.		ILLINOIS FED. AID PROJECT		



NOTES:

1.) SEE FIBER OPTIC PLAN SHEETS FOR CONDUIT AND FIBER OPTIC CABLE QUANTITIES ALONG 6TH ST.

CAMERA ELECTRICAL SERVICE QUANTITIES

QUANTITY	UNIT	ITEM
1	EACH	SERVICE INSTALLATION, TYPE A
1	EACH	WOOD POLE, 25 FT., CLASS 4
1960.0	FOOT	ELECTRIC CABLE IN CONDUIT, SERVICE, NO. 8 3/C



PLOT DATE  
FILE NAME  
PLOT SCALE  
USER NAME

REVISIONS	
NAME	DATE

ILLINOIS DEPARTMENT OF TRANSPORTATION  
**CAM 3 PLAN VIEW**  
D-6 ITS  
SANGAMON COUNTY

SCALE: VERT. 1" = 100'  
HORIZ.  
DATE MAY 2005  
DRAWN BY KDA  
CHECKED BY

MATCH LINE - CAM3-A

CCTV CAMERA SYSTEM MOUNTED ON EXISTING CANTILEVER SIGN TRUSS (S.N. 6C0841072 R097.5)