

F.A.P. RTE.	SECTION	COUNTY	TOTAL SHEETS	SHEET NO.
317	3RS-6,4RS-7	ADAMS	6	1

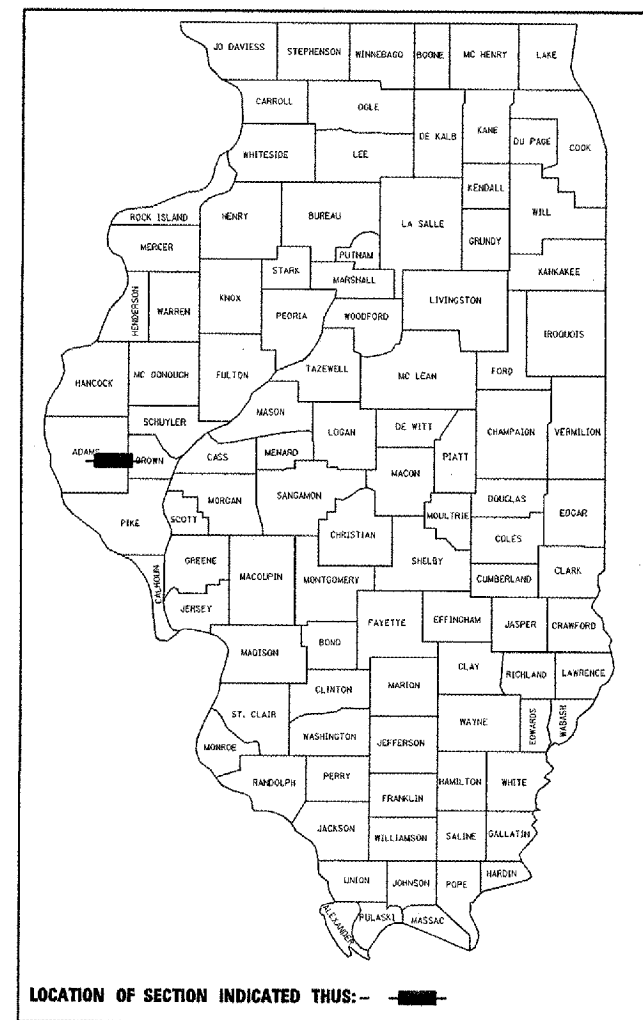
STATE OF ILLINOIS
DEPARTMENT OF TRANSPORTATION
DIVISION OF HIGHWAYS

**PROPOSED
HIGHWAY PLANS**

FAP ROUTE 317 (US 24)
SECTION 3RS-6,4RS-7
ADAMS COUNTY
C-96-512-06

FOR INDEX OF SHEETS, SEE SHEET NO. 2

D96-532-05

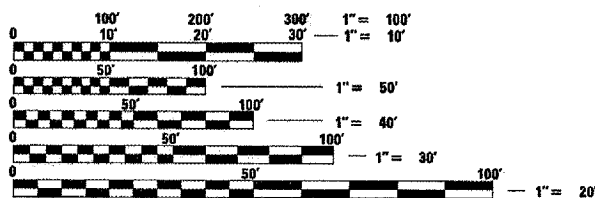


ROADWAY CLASSIFICATION - MINOR ARTERIAL
FAP ROUTE 317 (US 24)
CURRENT ADT 3800 (2005)
CRS 6.0 (2001)

PROJECT DESCRIPTION:

FROM THE EAST CITY LIMITS OF
CAMP POINT TO THE INTERSECTION IL 94.
PATCHING, MILLING, AND RESURFACING 2 1/4",
WITH PAVEMENT STRIPING AND AGGREGATE
SHOULDERS.

PROJECT ENGINEER: JOHN BARANZELLI (217)782-5503
SQUAD LEADER: MARCUS BRUCE (217)785-5336

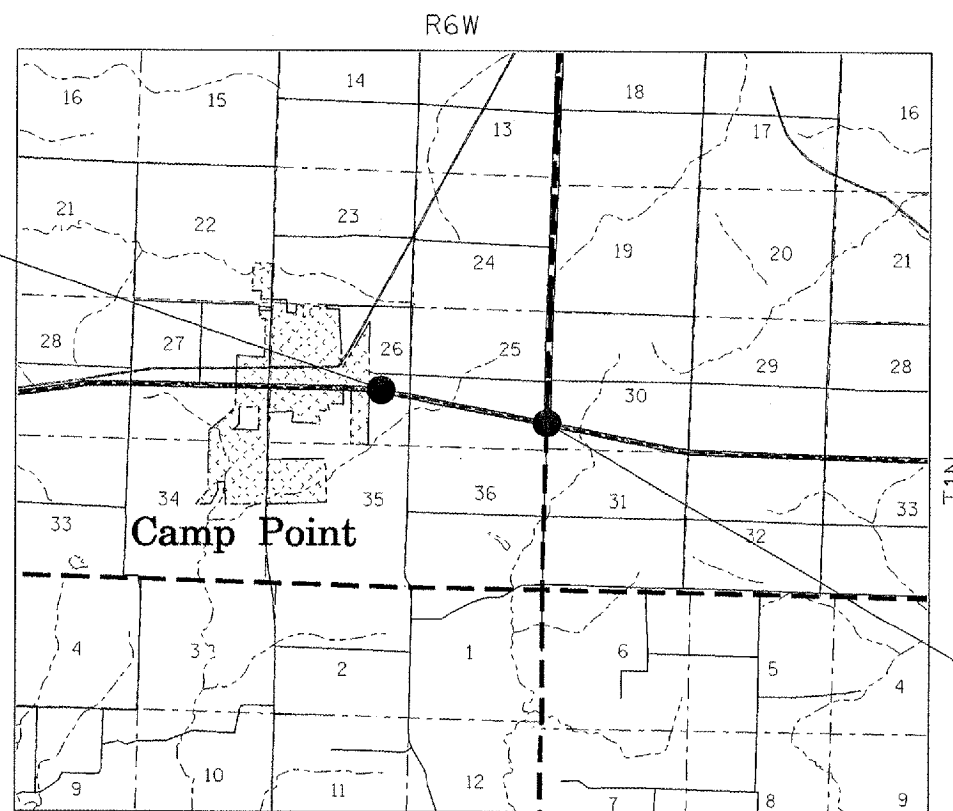


FULL SIZE PLANS HAVE BEEN PREPARED USING STANDARD
ENGINEERING SCALES. REDUCED SIZED PLANS WILL NOT
CONFORM TO STANDARD SCALES. IN MAKING MEASUREMENTS
ON REDUCED PLANS, THE ABOVE SCALES MAY BE USED.

J.U.L.I.E.
JOINT UTILITY LOCATION INFORMATION FOR EXCAVATION
1-800-892-0123

CONTRACT NO. 72A05

BEGIN SECTION
1336+15.00



END SECTION
1255+85.00

TOTAL LENGTH OF PROJECT - 1.52 MILES

STATE OF ILLINOIS
DEPARTMENT OF TRANSPORTATION
DIVISION OF HIGHWAYS

SUBMITTED May 23, 20 05

Christ H. Keed
DEPUTY DIRECTOR OF HIGHWAYS, REGION ENGINEER

July 1, 20 05
Michelle R. [Signature]
ENGINEER OF DESIGN AND ENVIRONMENT

July 1, 20 05
Robert M. [Signature]
DIRECTOR OF HIGHWAYS, CHIEF ENGINEER

**PRINTED BY THE AUTHORITY
OF THE STATE OF ILLINOIS**

F.A.P. RTE.	SECTION	COUNTY	TOTAL SHEETS	SHEET NO.
317	3RS-6,4RS-7	ADAMS	6	2
STA.			TO STA.	
FED. ROAD DIST. NO.		ILLINOIS	FED. AID PROJECT	

INDEX OF SHEETS

- 1) COVER SHEET
- 2) INDEX OF SHEETS, GENERAL NOTES, LIST OF STANDARDS
SIGNATURE BLOCK, APPLICATION RATES
- 3) SUMMARY OF QUANTITIES
- 4) SIDEROAD, ENTRANCE SCHEDULE AND STRIPING SCHEDULE
- 5) TYPICAL SECTIONS
- 6) ENTRANCE & SIDEROAD DETAIL

LIST OF STANDARDS

- 000001-04 STANDARD SYMBOLS, ABBREVIATIONS, AND PATTERNS
- 701006-02 OFF-ROAD OPERATIONS 2L, 2W 4.5 M (15') TO PAYMENT EDGE FOR SPEEDS > 45 MPH
- 701201-02 LANE CLOSURE, 2L, 2W, DAY ONLY ON-RD TO 600 mm (24") OFF-RD FOR SPEEDS > 45 MPH
- 701301-01 LANE CLOSURE, 2L, 2W SHORT TIME OPERATIONS
- 701306-01 LANE CLOSURE, 2L, 2W SLOW MOVING OPERATIONS-DAY ONLY FOR SPEEDS > 45 MPH
- 701311-02 LANE CLOSURE 2L, 2W MOVING OPERATIONS-DAY ONLY
- 702001-05 TRAFFIC CONTROL DEVICES
- 780001-01 TYPICAL PAVEMENT MARKINGS
- 781001-02 TYPICAL APPLICATIONS RAISED REFLECTIVE PAVEMENT MARKERS

APPLICATION RATES

THE FOLLOWING RATES FO APPLICATION HAVE BEEN ASSUMED
IN CALCULATING PLAN QUANTITIES:

BITUMINOUS MATERIALS (PRIME COAT)	0.00038 TON/SQ YD
AGGREGATE (PRIME COAT)	0.002 TON/SQ YD
AGGREGATE SHOULDERS, TYPE B	2.05 TON/CU YD
BITUMINOUS BINDER COURSE, SUPERPAVE	112 #/SQ YD * IN
BITUMINOUS SURFACE COURSE, SUPERPAVE	112 #/SQ YD * IN

MIXTURE REQUIREMENTS

THE FOLLOWING MIX REQUIREMENTS ARE APPLICABLE FOR THIS PROJECT

LOCATION(S):			
MIXTURE USE (S):	BIT SURF SUPR	LEVELING BINDER	INCIDENTAL RESURFACING
PG:	PG 64-22	PG 64-22	PG 64-22
RAP %: (MAX)	15%	15%	15%
DESIGN AIR VOIDS:	4.0% @ N DESIGN = 50	4.0% @ N DESIGN = 50	4.0% @ N DESIGN = 50
MIXTURE COMPOSITION: (GRADATION MIXTURE)	IL 9.5 OR 12.5	IL 9.5	IL 9.5 OR 12.5
FRICTION AGGREGATE:	MIX "C"	N/A	MIX "C"

GENERAL NOTES

WHERE SECTION OR SUBSECTION MONUMENTS ARE ENCOUNTERED, THE ENGINEER SHALL BE NOTIFIED BEFORE SUCH MONUMENTS ARE REMOVED. THE CONTRACTOR SHALL PROTECT AND CAREFULLY PRESERVE ALL MONUMENTS UNTIL AN AUTHORIZED SURVEYOR OR AGENT HAS WITNESSED OR OTHERWISE REFERENCED THEIR LOCATION. THE CONTRACTOR WILL BE RESPONSIBLE FOR HAVING AN AUTHORIZED SURVEYOR REESTABLISH ANY SECTION OR SUBSECTION MONUMENTS DESTROYED BY HIS/HER OPERATIONS.

ANY REFERENCE TO A STANDARD IN THE PLANS SHALL BE INTERPRETED TO MEAN THE EDITION AS INDICATED BY THE SUBNUMBER LISTED IN THE INDEX OF SHEETS OR THE COPY OF THE STANDARD INCLUDED IN THESE PLANS

THE THICKNESS OF BITUMINOUS MIXTURES SHOWN ON THE PLANS IS THE NOMINAL THICKNESS. DEVIATIONS FROM THE NOMINAL THICKNESS WILL BE PERMITTED WHEN SUCH DEVIATIONS OCCURE DUE TO IRREGULARITIES IN THE EXISTING SURFACE OR BASE ON WHICH THE BITUMINOUS MIXTURE IS PLACED.

"NO PASSING ZONES" TO BE FIELD VERIFIED BY THE BUREAU OF OPERATIONS. THE RESIDENT ENGINEER SHALL NOTIFY THE BUREAU OF OPERATIONS 14 DAYS PRIOR TO THE PLACEMENT OF PERMANENT PAVEMENT MARKINGS.

THE ENGINEER SHALL BE THE SOLE JUDGE CONCERNING CURING TIME FOR THE VARIOUS BITUMINOUS LIFTS.

IDOT DISTRICT 6	
EXAMINED <u>May 20</u> , 05	<i>[Signature]</i> OPERATIONS ENGINEER
EXAMINED <u>May 20</u> , 05	<i>[Signature]</i> PROGRAM IMPLEMENTATION ENGINEER
EXAMINED <u>May 23</u> , 05	<i>[Signature]</i> PROGRAM DEVELOPMENT ENGINEER

REVISIONS		ILLINOIS DEPARTMENT OF TRANSPORTATION INDEX OF SHEETS, GENERAL NOTES. & STANDARDS FAP 317 (US 24) ADAMS COUNTY
NAME	DATE	
		SCALE: VERT. HORIZ. DATE
DRAWN BY		CHECKED BY

F.A.P. RTE.	SECTION	COUNTY	TOTAL SHEETS	SHEET NO.
317	3BS-6,4BS-7	ADAMS	6	3
STA.		TO STA.		
FED. ROAD DIST. NO.		ILLINOIS FED. AID PROJECT		

SUMMARY OF QUANTITIES

CODED NO.	ITEM	UNIT	100% STATE
			I000 TOTAL QUANTITY
35800100	PREPARATION OF BASE	SQ YD	30
40600200	BITUMINOUS MATERIALS (PRIME COAT)	TON	9.5
40600300	AGGREGATE (PRIME COAT)	TON	44.7
40600895	CONSTRUCTION TEST STRIP	EACH	1
40600980	BITUMINOUS SURFACE REMOVAL - BUTT JOINT	SQ YD	27.8
40600990	TEMPORARY RAMP	SQ YD	22.8
44000030	BITUMINOUS SURFACE REMOVAL (VARIABLE DEPTH)	SQ YD	22354
44200140	PAVEMENT PATCHING, TYPE I, 12 INCH	SQ YD	100
44200144	PAVEMENT PATCHING, TYPE II, 12 INCH	SQ YD	300
44200148	PAVEMENT PATCHING, TYPE III, 12 INCH	SQ YD	300
44200150	PAVEMENT PATCHING, TYPE IV, 12 INCH	SQ YD	120
48101200	AGGREGATE SHOULDERS, TYPE B	TON	614
67100100	MOBILIZATION	L SUM	1
70100450	TRAFFIC CONTROL AND PROTECTION, STANDARD 701201	L SUM	1
70100460	TRAFFIC CONTROL AND PROTECTION, STANDARD 701306	L SUM	1
70300100	SHORT- TERM PAVEMENT MARKING	FOOT	2409
7031000	WORK ZONE PAVEMENT MARKING REMOVAL	SQ FT	803
* 78001120	PAINT PAVEMENT MARKING - LINE 5"	FOOT	22298
* 78100100	RAISED REFLECTIVE PAVEMENT MARKER	EACH	100
78300200	RAISED REFLECTIVE PAVEMENT MARKER REMOVAL	EACH	100
X4066414	BITUMINOUS CONCRETE SURFACE COURSE, SUPERPAVE, MIX "C", N50	TON	1874
X4066765	LEVELING BINDER (MACHINE METHOD), SUPERPAVE N50	TON	937
X4080020	INCIDENTAL BITUMINOUS SURFACING, SUPERPAVE N50	TON	14

*SPECIALTY ITEMS

REVISIONS	
NAME	DATE

ILLINOIS DEPARTMENT OF TRANSPORTATION
 SUMMARY OF QUNATITIES
 FAP 317 (US 24)
 ADAMS COUNTY

SCALE: VERT. DATE
 HORIZ. DATE

DRAWN BY
 CHECKED BY

F.A.P. RTE.	SECTION	COUNTY	TOTAL SHEETS	SHEET NO.
317	3RS-6;4RS-7	ADAMS	6	4
STA.		TO STA.		
FED. ROAD DIST. NO.	ILLINOIS	FED. AID PROJECT		

STRIPING SCHEDULE	
LOCATION	PAINT PAVEMENT MARKING - LINE 5" (LIN FT)
WHITE EDGE LINE	16060
YELLOW SKIP DASH	
1255+85 to 1261+84	150
1263+97 to 1271+18	180
1271+30 to 1330+52	1481
1331+94 to 1336+15	105
YELLOW NO PASSING ZONE	
(WB) 1255+85 to 1263+97	812
(EB) 1261+84 to 1271+30	606
(WB) 1271+18 to 1277+24	763
(EB) 1279+20 to 1285+52	946
(WB) 1324+31 to 1331+94	632
(EB) 1330+52 to 1336+15	563
TOTAL	22298

SIDEROADS, ENTRANCE SCHEDULE							
LOCATION	TYPE	SURFACE TYPE	AGG. SHLD. TYPE B (TONS)	INCIDENTAL BIT. SURF. (TONS)	BIT. MAT. (PR CT) (TONS)	BIT. SURF. REMOVAL (SQ YD)	PREPARATION OF BASE (SY YD)
1261+00 +/- LT	CE	BIT		2	0.005	14	
1281+00 +/- LT	PE	AGG	1	2	0.02		11
1288+00 +/- RT	FE	EARTH	1				
1303+00 +/- LT	PE	AGG	1	2	0.02		11
1308+65 +/- LT	FE	AGG	1				
1317+00 +/- LT	SR	BIT		3	0.006	17	
1317+00 +/- RT	SR	AGG		2	0.01		8
1319+00 +/- LT	PE	BIT		1	0.003	7	
1325+00 +/- LT	PE	BIT		2	0.004	10	
TOTALS			4	14	1	48	30

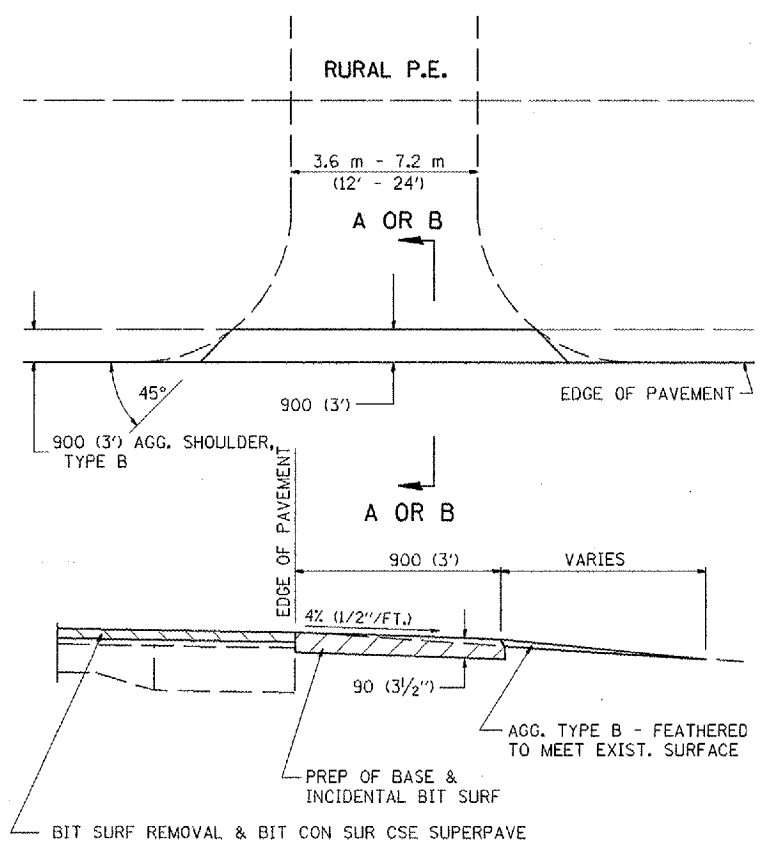
REVISIONS	
NAME	DATE

ILLINOIS DEPARTMENT OF TRANSPORTATION
 SIDEROAD, ENTRANCE SCHEDULE
 & STRIPING SCHEDULE
 FAP 317 (US 24)
 ADAMS COUNTY

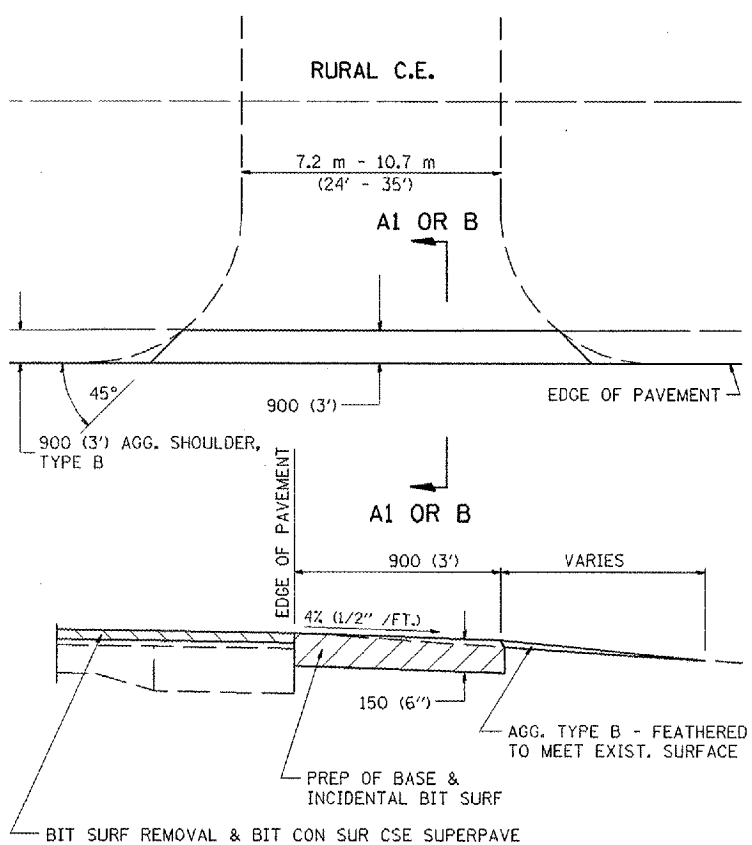
SCALE: VERT. _____
 HORIZ. _____
 DATE _____

DRAWN BY _____
 CHECKED BY _____

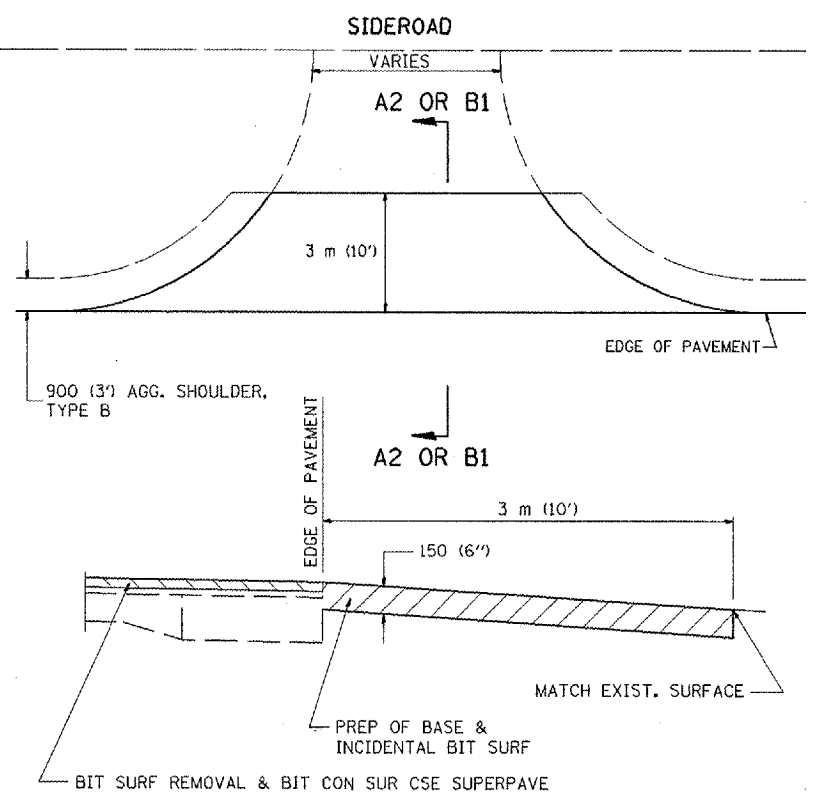
F.A.P. RTE.	SECTION	COUNTY	TOTAL SHEETS	SHEET NO.
317	3RS-6,4RS-7	ADAMS	6	6
STA.		TO STA.		
FED. ROAD DIST. NO.	ILLINOIS	FED. AID PROJECT		



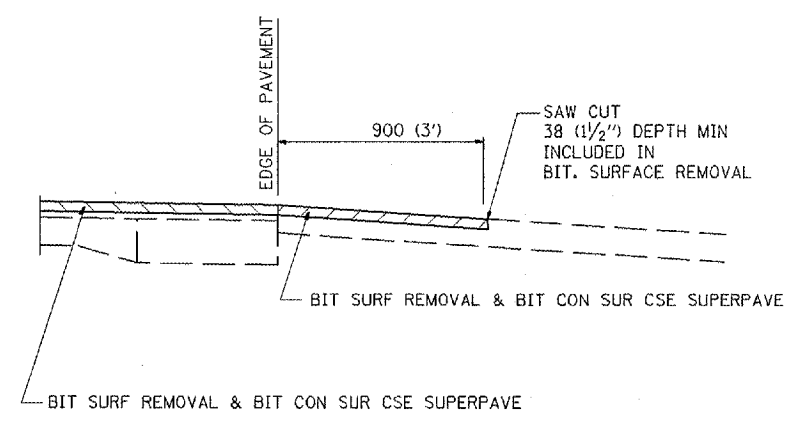
SECTION A-A FOR AGGREGATE P.E.



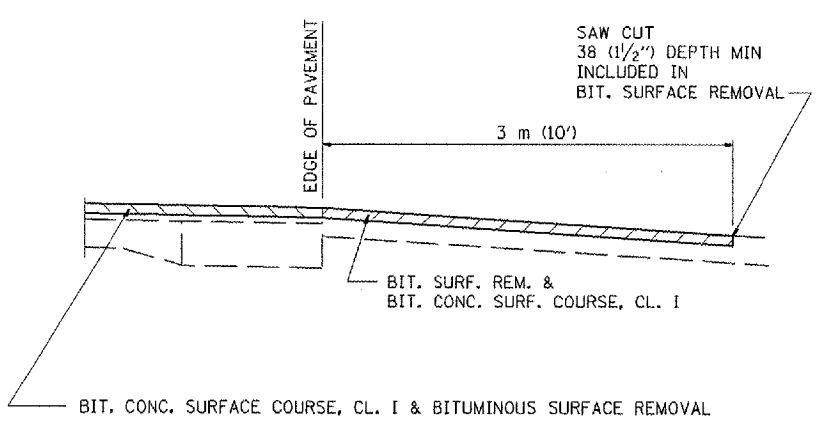
SECTION A1-A1 FOR AGGREGATE C.E.



SECTION A2-A2 FOR AGGREGATE SIDEROAD



SECTION B-B FOR BITUMINOUS P.E. & C.E.



SECTION B1-B1 FOR BITUMINOUS SIDEROAD

NOTE:
SEE SIDEROAD & ENTRANCE SCHEDULE, SHEET NO.

ALL DIMENSIONS ARE IN MILLIMETERS (INCHES) UNLESS OTHERWISE SHOWN

REVISIONS	
NAME	DATE
OPERATIONS	28AUG97
OPERATIONS	5MAR00
OPERATIONS	05DEC02

ILLINOIS DEPARTMENT OF TRANSPORTATION
DISTRICT 6 ENTRANCE AND SIDEROAD DETAILS FOR PROJECTS WITH MILLING

VERT. SCALE: HORIZ. DATE: OCTOBER 1, 1996
DRAWN BY CAD CHECKED BY WJR