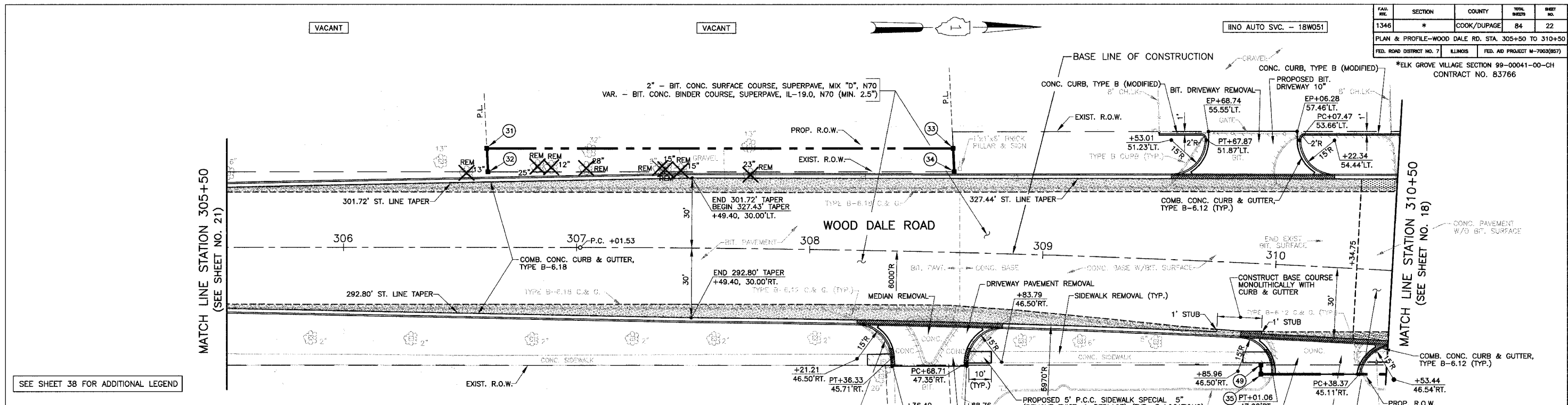


FILE NO.	SECTION	COUNTY	TOTAL SHEETS	SHEET NO.
1346	*	COOK/DUPAGE	84	22
PLAN & PROFILE - WOOD DALE RD. STA. 305+50 TO 310+50				
FED. ROAD DISTRICT NO. 7 ILLINOIS FED. AID PROJECT M-7003(867)				

*ELK GROVE VILLAGE SECTION 99-00041-00-CH CONTRACT NO. 83766



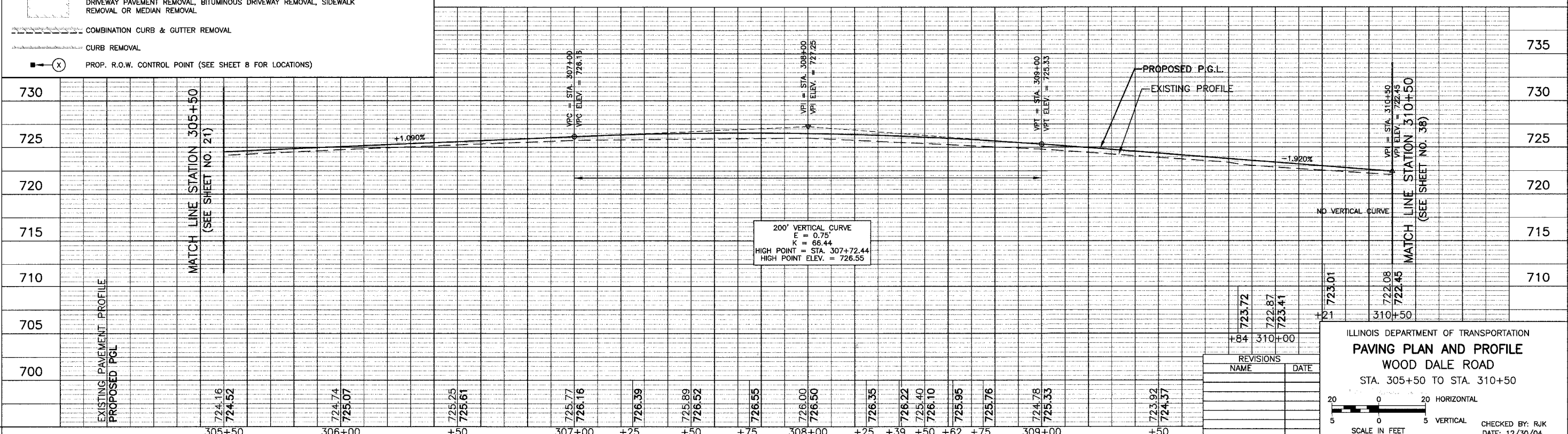
SEE SHEET 38 FOR ADDITIONAL LEGEND

LEGEND

- 2" - POLYMERIZED BIT. CONC. SURFACE COURSE, SUPERPAVE, MIX "F", N90
VAR. - POLYMERIZED BIT. CONC. BINDER COURSE, SUPERPAVE, IL-19.0, N90 (MIN. 2.5")
- 10" - PORTLAND CEMENT CONCRETE BASE COURSE
- 6" - SUB-BASE GRANULAR MATERIAL, TYPE B
- 2" - BIT. CONC. SURFACE COURSE, SUPERPAVE, MIX "D", N70
VAR. - BIT. CONC. BINDER COURSE, SUPERPAVE, IL-19.0, N70 (MIN. 2.5")
- 10" - PORTLAND CEMENT CONCRETE BASE COURSE
- 4" - SUB-BASE GRANULAR MATERIAL, TYPE B
- PROPOSED DEPRESSED CURB (FINAL LAYOUT SHALL BE APPROVED BY THE ENGINEER)
- DRIVEWAY PAVEMENT REMOVAL, BITUMINOUS DRIVEWAY REMOVAL, SIDEWALK REMOVAL OR MEDIAN REMOVAL
- COMBINATION CURB & GUTTER REMOVAL
- CURB REMOVAL
- PROP. R.O.W. CONTROL POINT (SEE SHEET 8 FOR LOCATIONS)

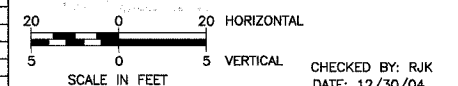
BASE LINE CURVE DATA

Δ = 8°-32'-57"
 R = 6000.00'
 T = 448.42'
 L = 895.28'
 E = 16.73'
 P.C. = 307+01.53
 P.L. = 311+49.95
 P.T. = 315+96.81



REVISIONS	
NAME	DATE

ILLINOIS DEPARTMENT OF TRANSPORTATION
PAVING PLAN AND PROFILE
 WOOD DALE ROAD
 STA. 305+50 TO STA. 310+50



CHECKED BY: RJK
 DATE: 12/30/04