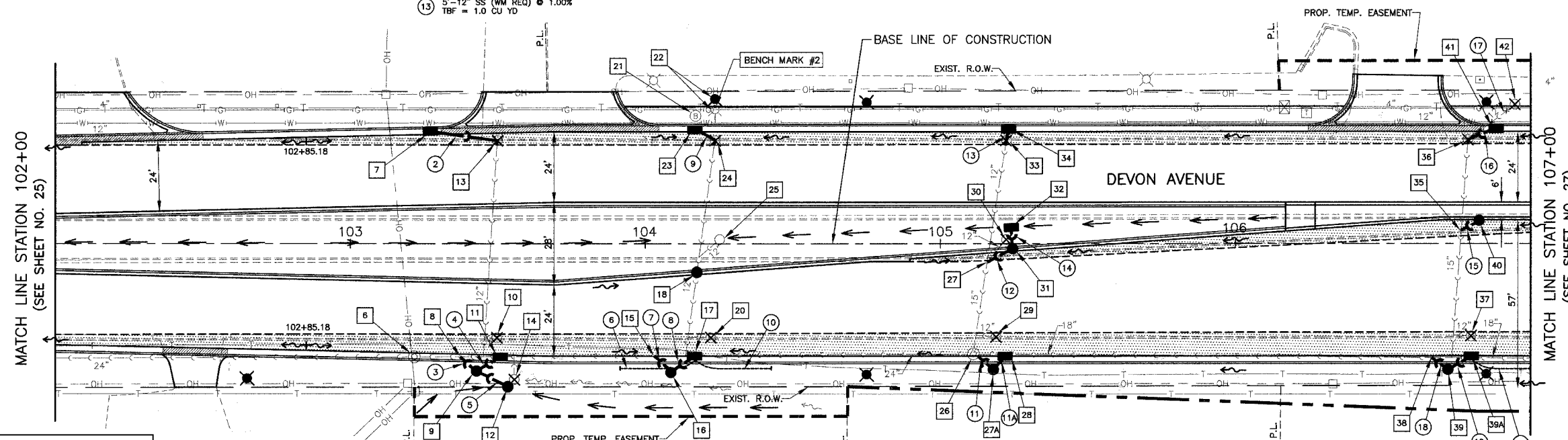


- 2 20'-12" SS (WM REQ) @ 1.00% TBF = 4.5 CU YD
- 3 5'-12" SS, CL A, T-2 @ 26.20% TBF = 1.9 CU YD
- 4 6'-12" SS, CL A, T-2 @ 1.00% TBF = 1.4 CU YD
- 5 5'-12" SS, CL A, T-1 @ 1.00% TBF = 1.1 CU YD
- 6 25'-PIPE UNDERDRAIN, FABRIC LINED TRENCH, 4"
- 7 5'-12" SS, CL A, T-2 @ 62.60% TBF = 1.7 CU YD
- 8 6'-12" SS, CL A, T-2 @ 1.00% TBF = 1.4 CU YD
- 9 8'-12" SS (WM REQ) @ 1.00% TBF = 1.6 CU YD
- 10 25'-PIPE UNDERDRAIN, FABRIC LINED TRENCH, 4"

- 11 5'-12" SS, CL A, T-1 @ 16.33% TBF = 0.6 CU YD
- 11A 3'-12" SS, CL A, T-1 @ 16.33% TBF = 0.5 CU YD
- 12 7'-12" SS, CL A, T-2 @ 24.14% TBF = 1.4 CU YD
- 13 5'-12" SS (WM REQ) @ 1.00% TBF = 1.0 CU YD
- 14 4'-12" SS, CL A, T-1 @ 2.00% TBF = 0.3 CU YD
- 15 4'-12" SS, CL A, T-2 @ 57.75% TBF = 0.8 CU YD
- 16 11'-12" SS (WM REQ) @ 11.43% TBF = 1.3 CU YD
- 17 16'-12" SS TO BE REMOVED TBF = 2.5 CU YD
- 18 5'-12" SS, CL A, T-2 @ 34.80% TBF = 1.4 CU YD
- 19 5'-12" SS, CL A, T-1 @ 1.00% TBF = 0.7 CU YD

FAIR NO.	SECTION	COUNTY	TOTAL SHEETS	SHEET NO.
1346	*	COOK/DUPAGE	84	26
DRAINAGE & UTILITIES-DEVON AVE. STA. 102+00 TO 107+00				
FED. ROAD DISTRICT NO. 7 ILLINOIS FED. AID PROJECT M-7003(857)				
*ELK GROVE VILLAGE SECTION 99-00041-00-CH CONTRACT NO. 83766				



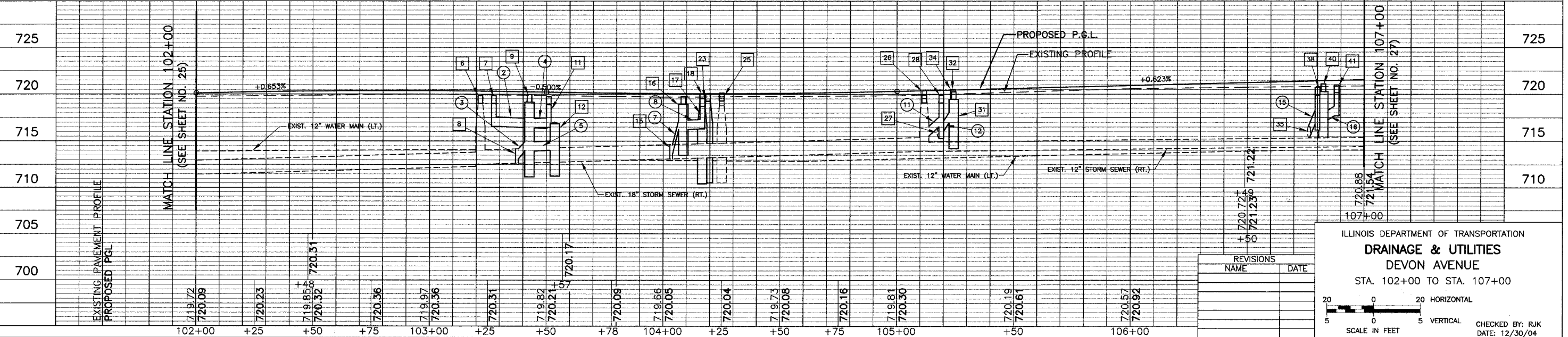
THE ENVIRONMENTAL FIRM IS REQUIRED TO CONTINUOUSLY MONITOR FOR WORKER SAFETY AND SOIL CONTAMINATION AT SEVERAL AREAS. SEE SPECIAL PROVISION FOR "NON-SPECIAL WASTE WORKING CONDITIONS" AND SUPPLEMENTAL SPECIFICATIONS FOR DETAILS.

- 6 STA. 103+21.7, 38.4'RT ADJ. M.H. W/NEW T-1 FR. O.L. EXIST. RIM = 719.80 PROP. RIM = 719.82
- 7 STA. 103+27.5, 37.0'LT INLET T-A, T-24 FR & GR RIM = 719.82 INV = 718.57
- 8 STA. 103+37.4, 37.1'RT CONNECT TO EXIST. PIPE W/STORM SEWER WYE INV = 712.62
- 9 STA. 103+42.7, 43.1'RT C.B. T-A, 4D, T-1 FR, C.L. W/FLAT SLAB TOP RIM = 719.97 INV = 718.41 (12"NE) INV = 713.93 (12"SE&NW)
- 10 STA. 103+49.8, 30.4'RT C.B. TO BE REMOVED (SEAL OUTLET PIPE)
- 11 STA. 103+51.0, 37.6'RT INLET T-A, T-24 FR & GR RIM = 719.72 INV = 716.47 (12"SW)
- 12 STA. 103+53.5, 47.5'RT C.B. T-C, T-8 GR RIM = 716.84 INV = 714.01
- 13 STA. 103+50.0, 33.3'LT FILL C.B. TO MAINTAIN FLOW INV = 715.81
- 14 STA. 104+17.1, 10.4'RT C.B. TO BE REMOVED (SEAL OUTLET PIPE)
- 15 STA. 104+03.4, 38.0'RT CONNECT TO EXIST. PIPE W/STORM SEWER WYE INV = 713.12
- 16 STA. 104+08.6, 43.6'RT C.B. T-A, 4D, T-1 FR, C.L. W/FLAT SLAB TOP RIM = 719.75 INV = 716.25 (12"NE&NW)
- 17 STA. 104+16.8, 38.0'RT INLET T-A, T-24 FR & GR RIM = 719.56 PROP. RIM = 716.31
- 18 STA. 104+17.1, 10.4'RT C.B. T-A, 4D, T-1 FR, O.L. W/FLAT SLAB TOP (INSERT IN EXIST. SS) RIM = 719.99 EX. INV = 713.87
- 19 NOT USED
- 20 STA. 104+22.2, 30.4'RT C.B. TO BE REMOVED (SEAL OUTLET PIPE)
- 21 STA. 104+17.2, 43.2'LT ADJ. VALVE BOX EXIST. RIM = 719.94 PROP. RIM = 719.60
- 22 STA. 104+23.9, 45.5'LT FIRE HYDRANT TO BE MOVED TO 49.0'LT
- 23 STA. 104+16.8, 38.0'LT INLET T-A, T-24 FR & GR RIM = 719.56 INV = 714.70
- 24 STA. 104+23.0, 33.4'LT FILL C.B. TO MAINTAIN FLOW INV = 714.62
- 25 STA. 104+25.0, 1.4'LT ADJUST C.B. EXIST. RIM = 719.61 PROP. RIM = 720.11
- 26 STA. 105+11.7, 37.3'RT RECONSTRUCT M.H. EXIST. RIM = 720.39 PROP. RIM = 719.90 INV = 716.65 (12"SE) EX. INV = 715.19 (15"NE) EX. INV = 713.89 (12"NE&NW)
- 27 STA. 105+15.6, 6.5'RT CONNECT TO EXIST. PIPE W/STORM SEWER WYE INV = 715.27
- 27A STA. 105+18.0, 42.5'RT C.B. T-A, 4D, T-1 FR, C.L. RIM = 720.20 INV = 716.70 (12"NE&NW)
- 28 STA. 105+20.0, 38.0'RT INLET T-A, T-24 FR & GR RIM = 719.89 INV = 716.73
- 29 STA. 105+18.9, 30.1'RT C.B. TO BE REMOVED (SEAL OUTLET PIPE)
- 30 STA. 105+22.2, 1.5'LT C.B. TO BE REMOVED (SEAL OUTLET PIPE)
- 31 STA. 105+24.3, 2.7'RT C.B. T-A, 4D, T-1 FR, O.L. RIM = 720.29 INV = 716.96 (12"N) INV = 716.96 (12"SW)
- 32 STA. 105+23.9, 5.7'LT INLET T-A, T-1 FR, O.L. RIM = 720.54 INV = 717.04
- 33 STA. 105+22.2, 33.6'LT FILL C.B. TO MAINTAIN FLOW INV = 715.37
- 34 STA. 105+23.0, 38.0'LT INLET T-A, T-24 FR & GR RIM = 719.96 INV = 715.42
- 35 STA. 106+76.4, 6.0'LT CONNECT TO EXIST. PIPE W/STORM SEWER WYE INV = 715.39
- 36 STA. 106+78.6, 33.8'LT FILL C.B. TO MAINTAIN FLOW INV = 716.08
- 37 STA. 106+79.9, 29.8'RT C.B. TO BE REMOVED (SEAL OUTLET PIPE)
- 38 STA. 106+66.0, 38.5'RT CONNECT TO EXIST. PIPE W/STORM SEWER TEE INV = 714.17
- 39 STA. 106+72.0, 42.5'RT C.B. T-A, 4D, T-1 FR, C.L. RIM = 720.20 INV = 717.91 (12"NE) INV = 715.91 (12"NW)
- 39A STA. 106+80.0, 38.0'RT INLET T-A, T-24 FR & GR RIM = 720.96 INV = 717.96
- 40 STA. 106+82.5, 8.0'LT W/FLAT SLAB TOP RIM = 721.10 INV = 717.70
- 41 STA. 106+88.2, 38.0'LT INLET T-A, T-24 FR & GR RIM = 720.99 INV = 717.89
- 42 STA. 106+95.0, 47.4'LT C.B. TO BE REMOVED (SEAL OUTLET PIPE)

SEE SHEET 38 FOR ADDITIONAL LEGEND

LEGEND

- PROPOSED PAVEMENT WIDENING
- PROPOSED DEPRESSED CURB



REVISIONS	
NAME	DATE

ILLINOIS DEPARTMENT OF TRANSPORTATION
DRAINAGE & UTILITIES
 DEVON AVENUE
 STA. 102+00 TO STA. 107+00

20 0 20 HORIZONTAL
 5 0 5 VERTICAL
 SCALE IN FEET

CHECKED BY: RJK
 DATE: 12/30/04