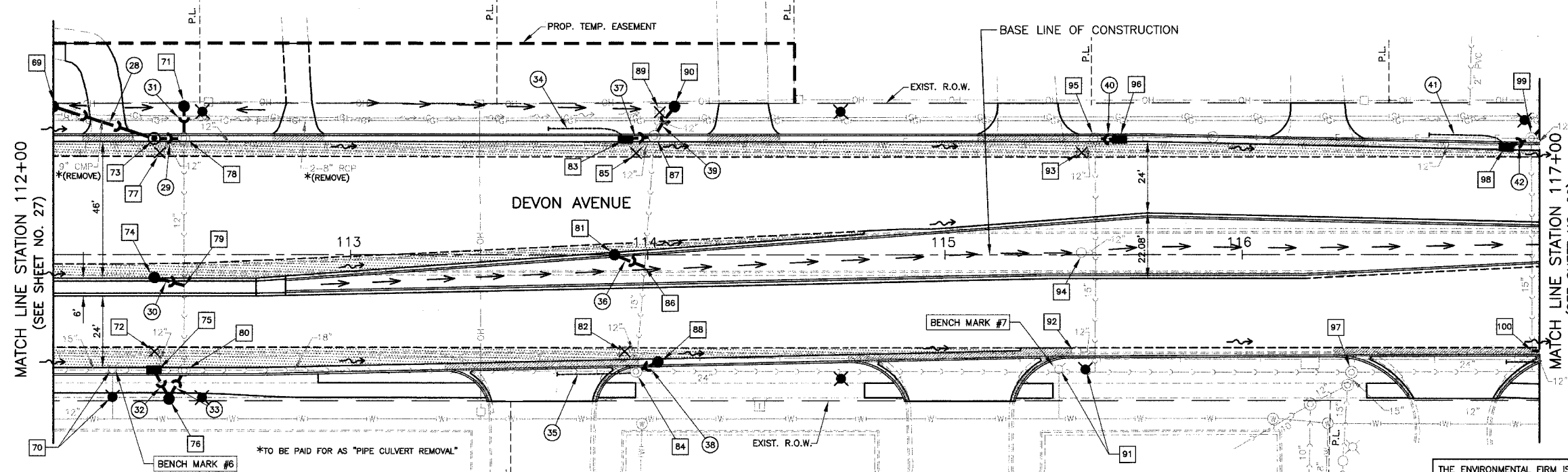


- (28) 33'-12" SS (WM REQ) ● 0.42% TBF = 4.0 CU YD
- (30) 8'-12" SS, CL. A, T-2 ● 29.56% TBF = 2.0 CU YD
- (32) 7'-12" SS, CL. A, T-1 ● 1.00% TBF = 0.9 CU YD
- (34) 25'-PIPE UNDERDRAIN, FABRIC LINED TRENCH, 4"
- (36) 10'-12" SS, CL. A, T-2 ● 27.10% TBF = 2.3 CU YD
- (38) 5'-12" SS, CL. A, T-1 ● 30.80% TBF = 1.8 CU YD
- (40) 5'-12" SS (WM REQ) ● 1.00% TBF = 0.4 CU YD
- (42) 6'-12" SS (WM REQ) ● 1.00% TBF = 0.4 CU YD
- (29) 7'-12" SS (WM REQ) ● 0.44% TBF = 0.6 CU YD
- (31) 8'-12" SS (WM REQ) ● 0.50% TBF = 0.7 CU YD
- (33) 7'-12" SS, CL. A, T-2 ● 1.00% TBF = 2.2 CU YD
- (35) 25'-PIPE UNDERDRAIN, FABRIC LINED TRENCH, 4"
- (37) 7'-12" SS (WM REQ) ● 4.00% TBF = 0.4 CU YD
- (39) 11'-12" SS (WM REQ) ● 0.45% TBF = 0.9 CU YD
- (41) 25'-PIPE UNDERDRAIN, FABRIC LINED TRENCH, 4"

SECTION	COUNTY	TOTAL SHEETS	SHEET NO.
1346	COOK/DUPAGE	84	28

DRAINAGE & UTILITIES-DEVON AVENUE, STA. 112+00 TO 117+00
 FED. ROAD DISTRICT NO. 7 ILLINOIS FED. AID PROJECT M-7003(887)

*ELK GROVE VILLAGE SECTION 99-00041-00-CH
CONTRACT NO. 83766



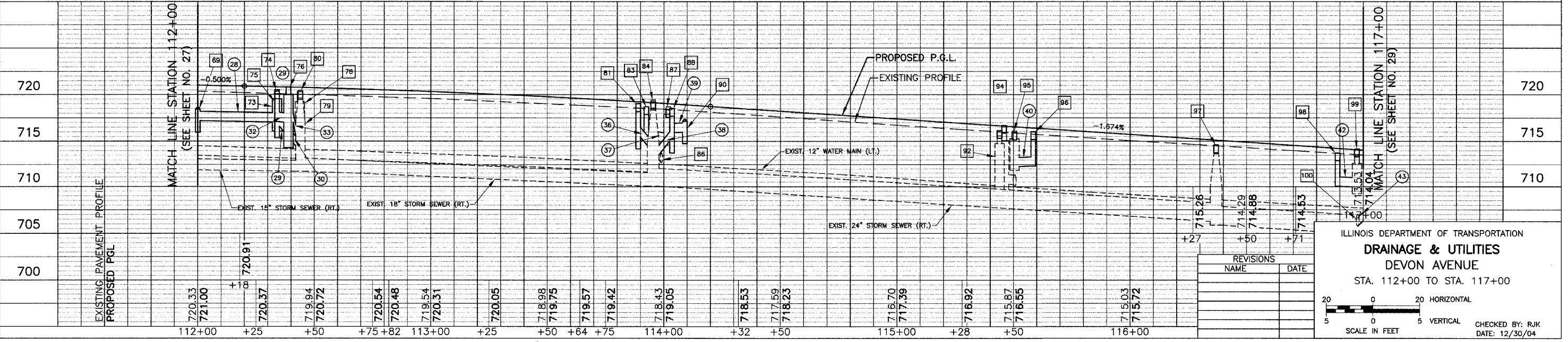
- (69) STA. 112+00.0, 49.5'LT C.B. T-C, T-8 GRATE RIM = 718.43 INV = 717.23
- (70) STA. 112+20.0, 38.5'RT FIRE HYDRANT TO BE MOVED TO 47.8'RT
- (71) STA. 112+43.8, 49.7'LT C.B. T-C, T-8 GRATE RIM = 718.75 INV = 719.55
- (72) STA. 112+33.8, 31.2'RT C.B. TO BE REMOVED (SEAL OUTLET PIPE)
- (73) STA. 112+34.0, 38.0'LT M.H. T-A, 4D, T-1 FR, O.L. RIM = 720.35 INV = 716.08(12"NW&E)
- (74) STA. 112+34.0, 8.0'RT C.B. T-C, T-11V FR & GR RIM = 720.50 INV = 716.59
- (75) STA. 112+34.0, 38.0'RT C.B. T-A, 4D, T-1 FR, C.L. W/FLAT SLAB TOP RIM = 720.81 INV = 717.28(12"NW) INV = 715.28(12"NE)
- (76) STA. 112+38.9, 48.5'RT C.B. T-A, 4D, T-1 FR, C.L. W/FLAT SLAB TOP RIM = 720.81 INV = 717.28(12"NW) EX. INV = 715.28(12"NE)
- (77) STA. 112+36.0, 33.0'LT C.B. TO BE REMOVED (SEAL OUTLET PIPE)
- (78) STA. 112+43.8, 39.1'LT ADJUST M.H. EXIST. RIM = 720.04 PROP. RIM = 720.27 INV = 716.05 (12"W) INV = 717.51 (12"N) EX. INV = 715.99(12"S)
- (79) STA. 112+43.9, 10.5'RT CONNECT TO EXIST. PIPE W/STORM SEWER WYE INV = 713.93
- (80) STA. 112+44.0, 38.9'RT ADJUST M.H. EXIST. RIM = 720.44 PROP. RIM = 720.26 PR. INV = 715.21 EX. INV = 712.69(E&W)
- (81) STA. 113+89.0, 0.7'LT C.B. TO BE REMOVED (SEAL OUTLET PIPE) RIM = 719.02 INV = 715.44
- (82) STA. 113+91.5, 32.4'RT C.B. TO BE REMOVED (SEAL OUTLET PIPE)
- (83) STA. 113+92.5, 38.0'LT INLET T-A, T-24 FR & GR RIM = 718.69 INV = 715.18
- (84) STA. 113+95.4, 39.2'RT ADJUST M.H. EXIST. RIM = 719.40 PROP. RIM = 719.21 INV = 713.57(12"NE) EX. INV = 711.05(15"N) EX. INV = 710.05(24" & 18"E&W)
- (85) STA. 113+96.2, 34.3'LT C.B. TO BE REMOVED (SEAL OUTLET PIPE)
- (86) STA. 113+98.9, 4.0'RT CONNECT TO EXIST. PIPE W/STORM SEWER WYE INV = 712.73
- (87) STA. 114+02.4, 39.6'LT ADJUST M.H. EXIST. RIM = 718.70 INV = 715.90(12"NE) INV = 714.90(12"W) EX. INV = 714.60(15"S)
- (88) STA. 114+03.5, 35.0'RT C.B. T-C, T-24 FR & GR RIM = 718.52 INV = 715.01
- (89) STA. 114+04.3, 48.0'LT C.B. TO BE REMOVED (SEAL OUTLET PIPE)
- (90) STA. 114+09.0, 49.8'LT C.B. T-C, T-8 GRATE RIM = 717.15 INV = 715.95
- (91) STA. 115+38.4, 38.7'RT FIRE HYDRANT TO BE MOVED TO STA. 115+48.0, 38.7'RT
- (92) STA. 115+44.0, 31.3'RT ADJ. C.B. W/NEW T-24 FR & GR EXIST. RIM = 715.59 PROP. RIM = 716.15
- (93) STA. 115+45.6, 32.9'LT C.B. TO BE REMOVED (SEAL OUTLET PIPE)
- (94) STA. 115+45.9, 0.7'LT ADJUST C.B. EXIST. RIM = 715.92 PROP. RIM = 716.69
- (95) STA. 115+50.4, 39.0'LT ADJUST M.H. EXIST. RIM = 716.10 PROP. RIM = 716.05 INV = 712.28(12"E) EX. INV = 711.80(15"S)
- (96) STA. 115+58.5, 38.0'LT INLET T-A, T-24 FR & GR RIM = 715.93 INV = 712.33
- (97) STA. 116+36.9, 39.5'RT ADJUST M.H. EXIST. RIM = 714.51 PROP. RIM = 714.60
- (98) STA. 116+89.0, 35.3'LT INLET T-A, T-24 FR & GR RIM = 713.75 INV = 710.04
- (99) STA. 116+97.3, 39.0'LT ADJUST M.H. EXIST. RIM = 713.47 PROP. RIM = 714.18 INV = 710.09(12"NE) INV = 709.98(12"SW) EX. INV = 709.22(15"S)
- (100) STA. 116+97.6, 32.6'RT CONNECT TO EXIST. PIPE W/STORM SEWER WYE INV = 705.77

SEE SHEET 38 FOR ADDITIONAL LEGEND

LEGEND

- PROPOSED PAVEMENT WIDENING
- PROPOSED DEPRESSED CURB

THE ENVIRONMENTAL FIRM IS REQUIRED TO CONTINUOUSLY MONITOR FOR WORKER SAFETY AND SOIL CONTAMINATION AT SEVERAL AREAS. SEE SPECIAL PROVISION FOR "NON-SPECIAL WASTE WORKING CONDITIONS" AND SUPPLEMENTAL SPECIFICATIONS FOR DETAILS.



REVISIONS	
NAME	DATE

ILLINOIS DEPARTMENT OF TRANSPORTATION
DRAINAGE & UTILITIES
 DEVON AVENUE
 STA. 112+00 TO STA. 117+00

SCALE IN FEET
 20 0 20 HORIZONTAL
 5 0 5 VERTICAL

CHECKED BY: RJK
 DATE: 12/30/04