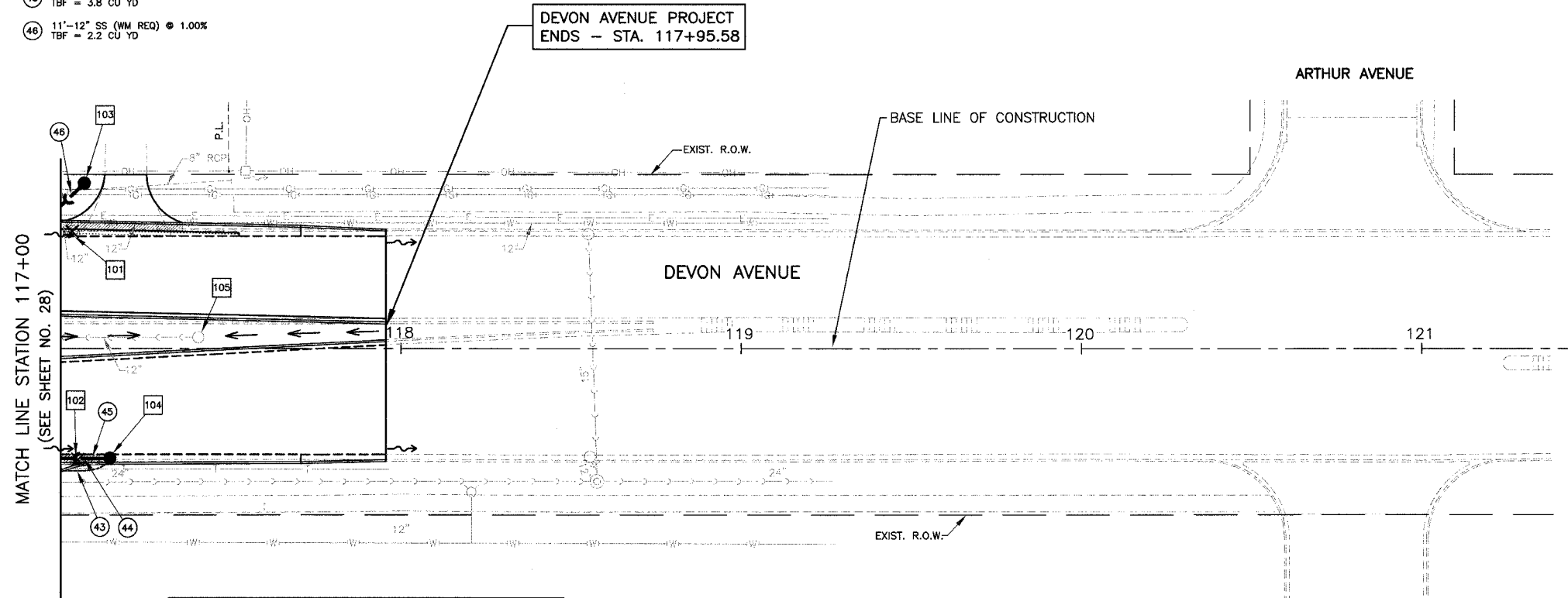


- 43 6'-12" SS TO BE REMOVED
- 44 25"-PIPE UNDERDRAIN, FABRIC LINED TRENCH, 4"
- 45 16'-12" SS, CL. A, T-2 @ 23.81% TBF = 3.8 CU YD
- 46 11'-12" SS (WM REQ) @ 1.00% TBF = 2.2 CU YD

FAA. NO.	SECTION	COUNTY	TOTL. SHEETS	SHEET NO.
1346	*	COOK/DUPAGE	84	29

DRAINAGE & UTILITIES-DEVON AVE. STA. 117+00 TO 121+00  
 FED. ROAD DISTRICT NO. 7 ILLINOIS FED. AID PROJECT M-7003(857)

\*ELK GROVE VILLAGE SECTION 99-00041-00-CH  
CONTRACT NO. 83766



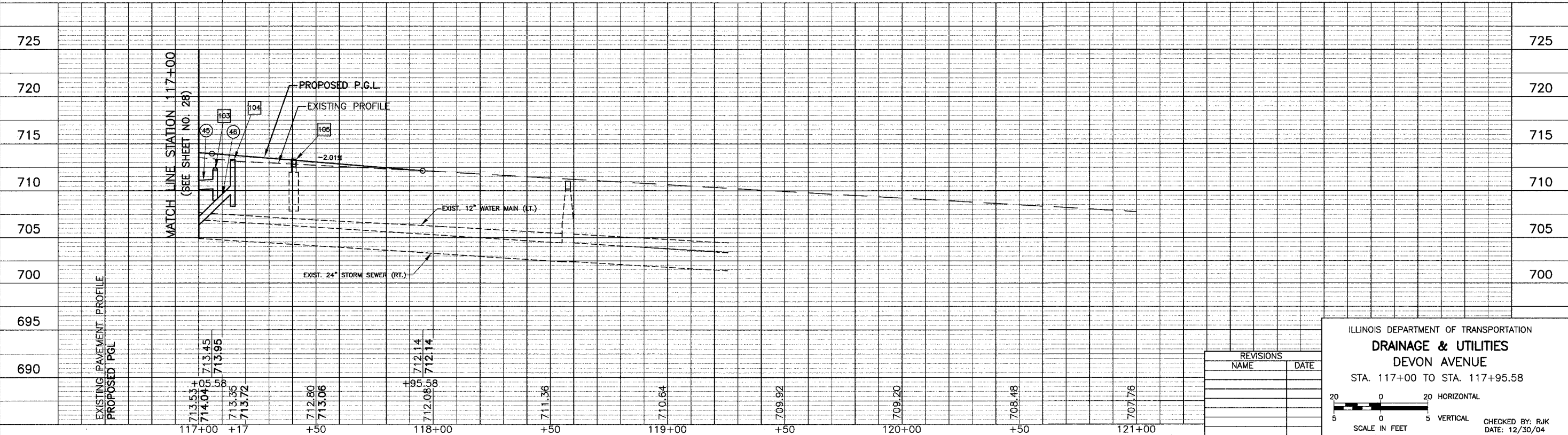
SEE SHEET 38 FOR ADDITIONAL LEGEND

THE ENVIRONMENTAL FIRM IS REQUIRED TO CONTINUOUSLY MONITOR FOR WORKER SAFETY AND SOIL CONTAMINATION AT SEVERAL AREAS. SEE SPECIAL PROVISION FOR "NON-SPECIAL WASTE WORKING CONDITIONS" AND SUPPLEMENTAL SPECIFICATIONS FOR DETAILS.

**LEGEND**

- PROPOSED PAVEMENT WIDENING
- PROPOSED DEPRESSED CURB

- 101 STA. 117+03.4, 34.8'LT C.B. TO BE REMOVED (ABANDON EXIST. INVERT)
- 102 STA. 117+04.9, 32.3'RT C.B. TO BE REMOVED (ABANDON EXIST. INVERT)
- 103 STA. 117+07.0, 48.5'LT C.B. T-C, T-8 GRATE RIM = 712.20 INV = 710.20
- 104 STA. 117+14.5, 31.4'RT C.B. T-C, T-24 FR & GR RIM = 713.31 INV = 709.58
- 105 STA. 117+40.5, 3.3'LT RECONSTRUCT C.B. EXIST. RIM = 712.79 PROP. RIM = 713.35



REVISIONS	
NAME	DATE

ILLINOIS DEPARTMENT OF TRANSPORTATION  
**DRAINAGE & UTILITIES**  
 DEVON AVENUE  
 STA. 117+00 TO STA. 117+95.58

20 0 20 HORIZONTAL  
 5 0 5 VERTICAL  
 SCALE IN FEET

CHECKED BY: RJK  
 DATE: 12/30/04