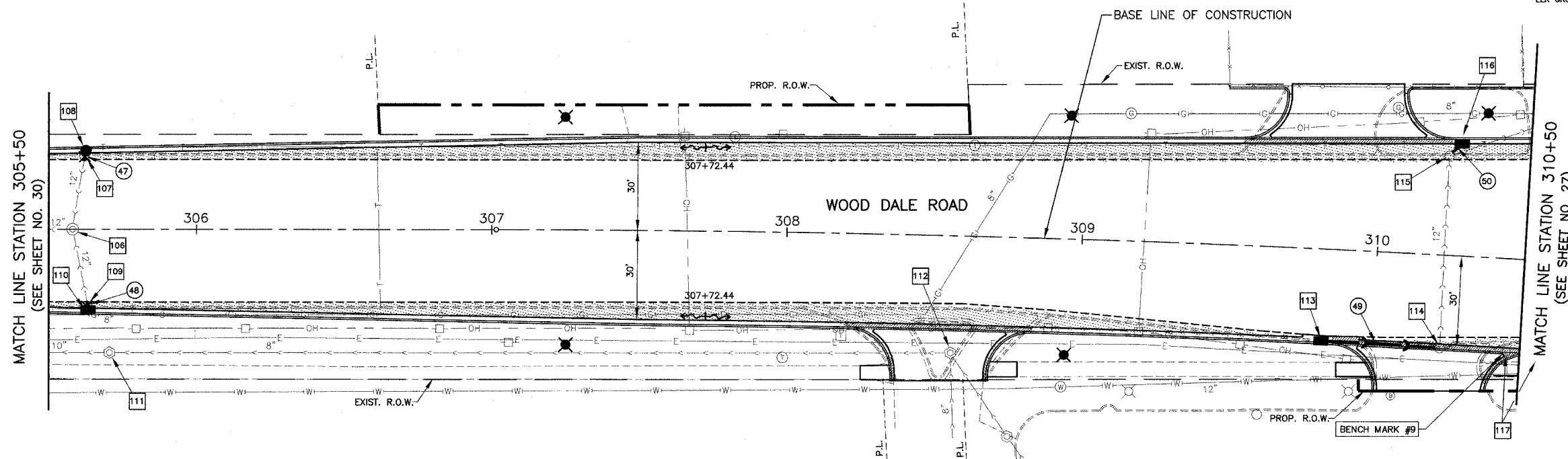


- 47 3'-12" SS, CL A, T-2 @ 6.33%  
TBF = 0.9 CU YD
- 48 4'-12" SS, CL A, T-1 @ 49.50%  
TBF = 0.1 CU YD
- 49 37'-12" SS, CL A, T-1 @ 3.32%  
TBF = 1.9 CU YD
- 50 4'-12" SS, CL A, T-1 @ 1.00%  
TBF = 0.5 CU YD

FILE NO.	SECTION	COUNTY	TOTAL SHEETS	SHEET NO.
1346	*	COOK/DUPAGE	84	31

DRAINAGE & UTILITIES—WOOD DALE RD. STA. 305+50 TO 310+50  
 FED. ROAD DISTRICT NO. 7 ILLINOIS FED. AID PROJECT M-7003(887)

\*ELK GROVE VILLAGE SECTION 99-00041-00-CH  
CONTRACT NO. 83766



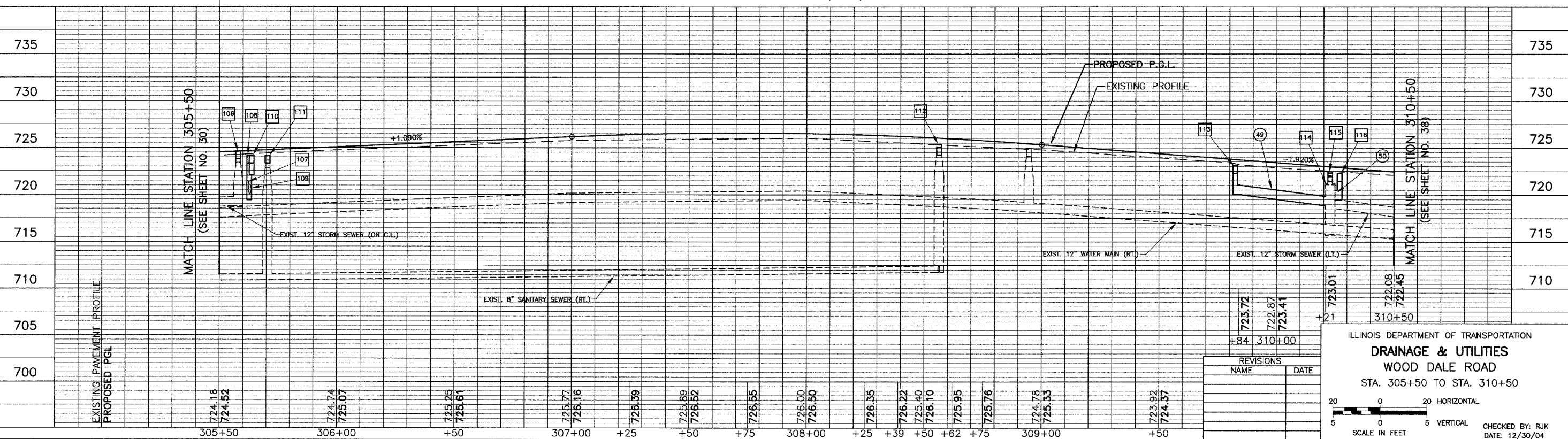
SEE SHEET 38 FOR ADDITIONAL LEGEND

**LEGEND**

- PROPOSED PAVEMENT WIDENING
- PROPOSED DEPRESSED CURB

- 106 STA. 305+58.0, ON B.L. ADJUST M.H. EXIST. RIM = 724.22 PROP. RIM = 724.61
- 107 STA. 305+62.0, 23.9'LT C.B. TO BE REMOVED CONNECT SS TO OUTLET PIPE INV = 720.48
- 108 STA. 305+62.7, 28.0'LT C.B. T-C, T-23 FR & GR RIM = 724.14 INV = 720.67
- 109 STA. 305+62.9, 24.4'RT C.B. TO BE REMOVED CONNECT SS TO OUTLET PIPE INV = 720.08
- 110 STA. 305+63.7, 26.6'RT INLET T-A, T-23 FR & GR RIM = 724.14 INV = 722.06
- 111 STA. 305+70.5, 41.6'RT ADJUST M.H. EXIST. RIM = 723.62 PROP. RIM = 724.13
- 112 STA. 308+58.3, 39.5'RT ADJUST M.H. EXIST. RIM = 725.38 PROP. RIM = 725.20
- 113 STA. 309+82.4, 29.2'RT INLET T-A, T-23 FR & GR RIM = 723.10 INV = 720.06
- 114 STA. 310+22.8, 30.0'RT ADJ. C.B. W/NEW T-1 FR, C.L. EXIST. RIM = 721.93 PROP. RIM = 722.30 INV = 718.83(12'S) EX. INV = 718.83(12'W)
- 115 STA. 310+22.8, 32.7'LT ADJ. C.B. W/NEW T-1 FR, C.L. EXIST. RIM = 722.08 PROP. RIM = 722.46 PR. INV = 719.27(12'NW) EX. INV = 718.53(12'S&NW)
- 116 STA. 310+26.8, 38.1'LT INLET T-A, T-23 FR & GR RIM = 722.31 INV = 719.31
- 117 STA. 310+45.2, 31.2'RT FIRE HYDRANT TO BE MOVED TO STA. 310+61.0, 41.8'RT (SEE SHEET 27)

THE ENVIRONMENTAL FIRM IS REQUIRED TO CONTINUOUSLY MONITOR FOR WORKER SAFETY AND SOIL CONTAMINATION AT SEVERAL AREAS. SEE SPECIAL PROVISION FOR "NON-SPECIAL WASTE WORKING CONDITIONS" AND SUPPLEMENTAL SPECIFICATIONS FOR DETAILS.



ILLINOIS DEPARTMENT OF TRANSPORTATION  
**DRAINAGE & UTILITIES**  
 WOOD DALE ROAD  
 STA. 305+50 TO STA. 310+50

20 0 20 HORIZONTAL  
 5 0 5 VERTICAL  
 SCALE IN FEET

CHECKED BY: RJK  
 DATE: 12/30/04