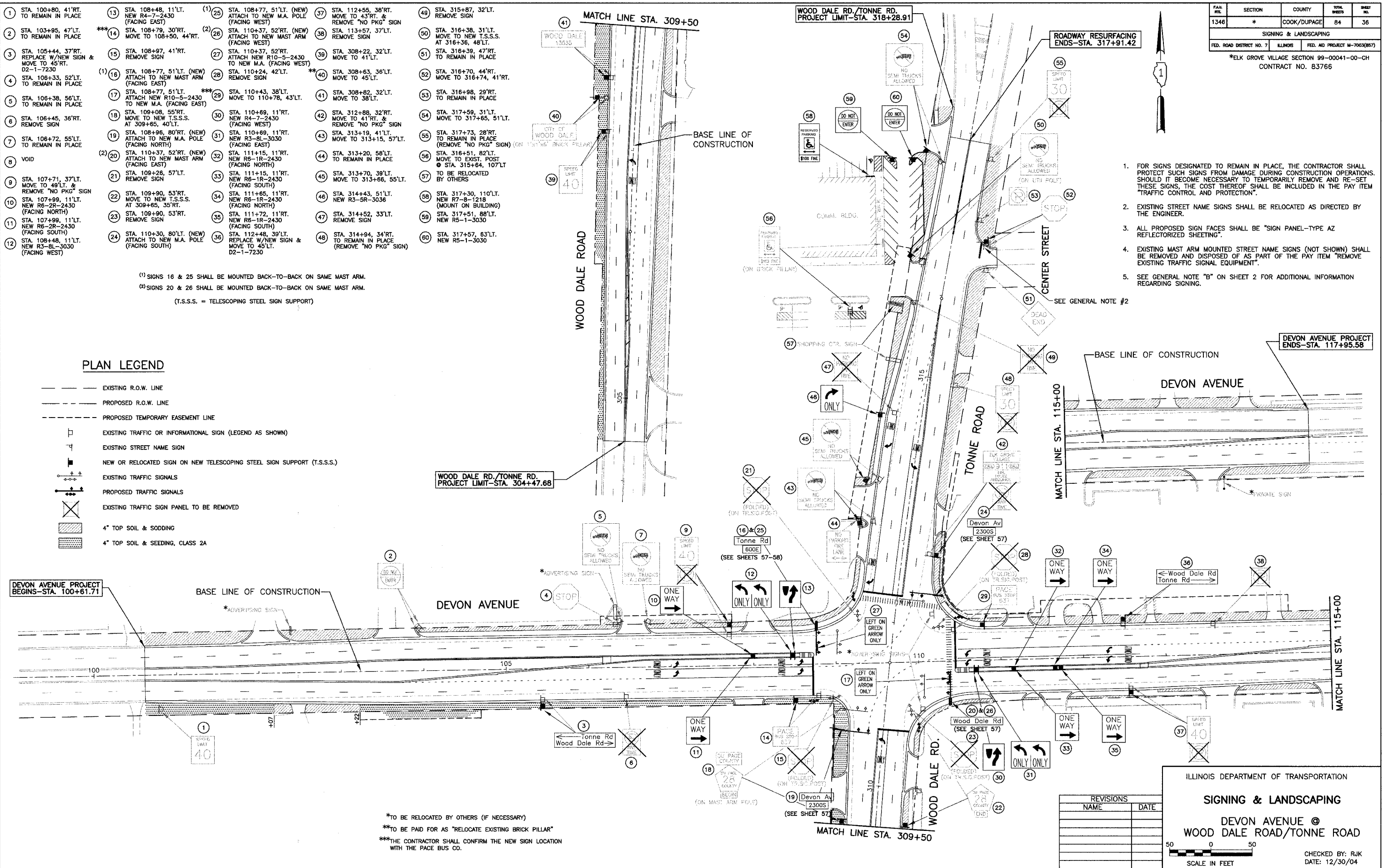


- 1 STA. 100+80, 41'RT. TO REMAIN IN PLACE
- 2 STA. 103+95, 47'LT. TO REMAIN IN PLACE
- 3 STA. 105+44, 37'RT. REPLACE W/NEW SIGN & MOVE TO 45'RT. D2-1-7230
- 4 STA. 106+33, 52'LT. TO REMAIN IN PLACE
- 5 STA. 106+38, 56'LT. TO REMAIN IN PLACE
- 6 STA. 106+45, 36'RT. REMOVE SIGN
- 7 STA. 106+72, 55'LT. TO REMAIN IN PLACE
- 8 VOID
- 9 STA. 107+71, 37'LT. MOVE TO 49'LT. & REMOVE "NO PKG" SIGN
- 10 STA. 107+99, 11'LT. NEW R6-2R-2430 (FACING NORTH)
- 11 STA. 107+99, 11'LT. NEW R6-2R-2430 (FACING SOUTH)
- 12 STA. 108+48, 11'LT. NEW R3-BL-3030 (FACING WEST)
- 13 STA. 108+48, 11'LT. NEW R4-7-2430 (FACING EAST)
- 14 STA. 108+79, 30'RT. MOVE TO 108+50, 44'RT.
- 15 STA. 108+97, 41'RT. REMOVE SIGN
- 16 STA. 108+77, 51'LT. (NEW) ATTACH TO NEW MAST ARM (FACING EAST)
- 17 STA. 108+77, 51'LT. ATTACH NEW R10-5-2430 TO NEW M.A. (FACING EAST)
- 18 STA. 109+08, 55'RT. MOVE TO NEW T.S.S.S. AT 309+65, 40'LT.
- 19 STA. 108+96, 80'RT. (NEW) ATTACH TO NEW M.A. POLE (FACING NORTH)
- 20 STA. 110+37, 52'RT. (NEW) ATTACH TO NEW MAST ARM (FACING EAST)
- 21 STA. 109+28, 57'LT. REMOVE SIGN
- 22 STA. 109+90, 53'RT. MOVE TO NEW T.S.S.S. AT 309+65, 35'RT.
- 23 STA. 109+90, 53'RT. REMOVE SIGN
- 24 STA. 110+30, 80'LT. (NEW) ATTACH TO NEW M.A. POLE (FACING SOUTH)
- 25 STA. 108+77, 51'LT. (NEW) ATTACH TO NEW M.A. POLE (FACING WEST)
- 26 STA. 110+37, 52'RT. (NEW) ATTACH TO NEW MAST ARM (FACING WEST)
- 27 STA. 110+37, 52'RT. ATTACH NEW R10-5-2430 TO NEW M.A. (FACING WEST)
- 28 STA. 110+24, 42'LT. REMOVE SIGN
- 29 STA. 110+43, 38'LT. MOVE TO 110+78, 43'LT.
- 30 STA. 110+69, 11'RT. NEW R4-7-2430 (FACING WEST)
- 31 STA. 110+69, 11'RT. NEW R3-BL-3030 (FACING EAST)
- 32 STA. 110+15, 11'RT. NEW R6-1R-2430 (FACING NORTH)
- 33 STA. 111+15, 11'RT. NEW R6-1R-2430 (FACING SOUTH)
- 34 STA. 111+65, 11'RT. NEW R6-1R-2430 (FACING NORTH)
- 35 STA. 111+72, 11'RT. NEW R6-1R-2430 (FACING SOUTH)
- 36 STA. 112+48, 39'LT. REPLACE W/NEW SIGN & MOVE TO 45'LT. D2-1-7230
- 37 STA. 112+55, 38'RT. MOVE TO 43'RT. & REMOVE "NO PKG" SIGN
- 38 STA. 113+57, 37'LT. REMOVE SIGN
- 39 STA. 308+22, 32'LT. MOVE TO 41'LT.
- 40 STA. 308+63, 36'LT. MOVE TO 45'LT.
- 41 STA. 308+82, 32'LT. MOVE TO 38'LT.
- 42 STA. 312+88, 32'RT. MOVE TO 41'RT. & REMOVE "NO PKG" SIGN
- 43 STA. 313+19, 41'LT. TO REMAIN IN PLACE
- 44 STA. 313+20, 58'LT. TO REMAIN IN PLACE
- 45 STA. 313+70, 39'LT. MOVE TO 313+66, 55'LT.
- 46 STA. 314+43, 51'LT. NEW R3-SR-3036
- 47 STA. 314+52, 33'LT. REMOVE SIGN
- 48 STA. 314+94, 34'RT. TO REMAIN IN PLACE (REMOVE "NO PKG" SIGN)
- 49 STA. 315+87, 32'LT. REMOVE SIGN
- 50 STA. 316+38, 31'LT. MOVE TO NEW T.S.S.S. AT 316+36, 48'LT.
- 51 STA. 316+39, 47'RT. TO REMAIN IN PLACE
- 52 STA. 316+70, 44'RT. MOVE TO 316+74, 41'RT.
- 53 STA. 316+98, 29'RT. TO REMAIN IN PLACE
- 54 STA. 317+59, 31'LT. MOVE TO 317+65, 51'LT.
- 55 STA. 317+73, 28'RT. TO REMAIN IN PLACE (REMOVE "NO PKG" SIGN)
- 56 STA. 318+51, 82'LT. MOVE TO EXIST. POST @ STA. 315+64, 107'LT. TO BE RELOCATED BY OTHERS
- 57 STA. 317+30, 110'LT. NEW R7-8-1218 (MOUNT ON BUILDING)
- 58 STA. 317+51, 88'LT. NEW R5-1-3030
- 59 STA. 317+57, 63'LT. NEW R5-1-3030

(1) SIGNS 16 & 25 SHALL BE MOUNTED BACK-TO-BACK ON SAME MAST ARM.  
 (2) SIGNS 20 & 26 SHALL BE MOUNTED BACK-TO-BACK ON SAME MAST ARM.  
 (T.S.S.S. = TELESCOPING STEEL SIGN SUPPORT)

**PLAN LEGEND**

- EXISTING R.O.W. LINE
- - - PROPOSED R.O.W. LINE
- - - PROPOSED TEMPORARY EASEMENT LINE
- EXISTING TRAFFIC OR INFORMATIONAL SIGN (LEGEND AS SHOWN)
- EXISTING STREET NAME SIGN
- NEW OR RELOCATED SIGN ON NEW TELESCOPING STEEL SIGN SUPPORT (T.S.S.S.)
- EXISTING TRAFFIC SIGNALS
- PROPOSED TRAFFIC SIGNALS
- EXISTING TRAFFIC SIGN PANEL TO BE REMOVED
- ▨ 4" TOP SOIL & SODDING
- ▨ 4" TOP SOIL & SEEDING, CLASS 2A



FILE NO.	SECTION	COUNTY	TOTAL SHEETS	SHEET NO.
1346	*	COOK/DUPAGE	84	36
SIGNING & LANDSCAPING				
FED. ROAD DISTRICT NO. 7 ILLINOIS FED. AID PROJECT M-7003(857)				
*ELK GROVE VILLAGE SECTION 99-00041-00-CH CONTRACT NO. 83766				

1. FOR SIGNS DESIGNATED TO REMAIN IN PLACE, THE CONTRACTOR SHALL PROTECT SUCH SIGNS FROM DAMAGE DURING CONSTRUCTION OPERATIONS. SHOULD IT BECOME NECESSARY TO TEMPORARILY REMOVE AND RE-SET THESE SIGNS, THE COST THEREOF SHALL BE INCLUDED IN THE PAY ITEM "TRAFFIC CONTROL AND PROTECTION".
2. EXISTING STREET NAME SIGNS SHALL BE RELOCATED AS DIRECTED BY THE ENGINEER.
3. ALL PROPOSED SIGN FACES SHALL BE "SIGN PANEL-TYPE AZ REFLECTORIZED SHEETING".
4. EXISTING MAST ARM MOUNTED STREET NAME SIGNS (NOT SHOWN) SHALL BE REMOVED AND DISPOSED OF AS PART OF THE PAY ITEM "REMOVE EXISTING TRAFFIC SIGNAL EQUIPMENT".
5. SEE GENERAL NOTE "B" ON SHEET 2 FOR ADDITIONAL INFORMATION REGARDING SIGNING.

\*TO BE RELOCATED BY OTHERS (IF NECESSARY)  
 \*\*TO BE PAID FOR AS "RELOCATE EXISTING BRICK PILLAR"  
 \*\*\*THE CONTRACTOR SHALL CONFIRM THE NEW SIGN LOCATION WITH THE PACE BUS CO.

REVISIONS	
NAME	DATE

ILLINOIS DEPARTMENT OF TRANSPORTATION  
**SIGNING & LANDSCAPING**  
 DEVON AVENUE @  
 WOOD DALE ROAD/TONNE ROAD

CHECKED BY: RJK  
 DATE: 12/30/04

