

F.A. RTE.	SECTION	COUNTY	TOTAL SHEETS	SHEET NO.
1419	04-00239-00-TL	COOK	34	8
STA.	TO STA.			
FED. ROAD DIST. NO.	ILLINOIS	FED. AID PROJECT		

83792

RESTORATION OF WORK AREA

RESTORATION OF THE TRAFFIC SIGNAL WORK AREA SHALL BE INCIDENTAL TO THE RELATED PAY ITEM SUCH AS FOUNDATION, CONDUIT, HANDHOLE, TRENCH AND BACKFILL, ETC., AND NO EXTRA COMPENSATION SHALL BE ALLOWED. ALL ROADWAY SURFACES SUCH AS SHOULDERS, MEDIANS, SIDEWALKS, PAVEMENT, ETC., SHALL BE REPLACED IN KIND. ALL DAMAGE TO MOWED LAWNS SHALL BE REPLACED WITH AN APPROVED SOD, IN ACCORDANCE WITH STANDARD SPECIFICATION.

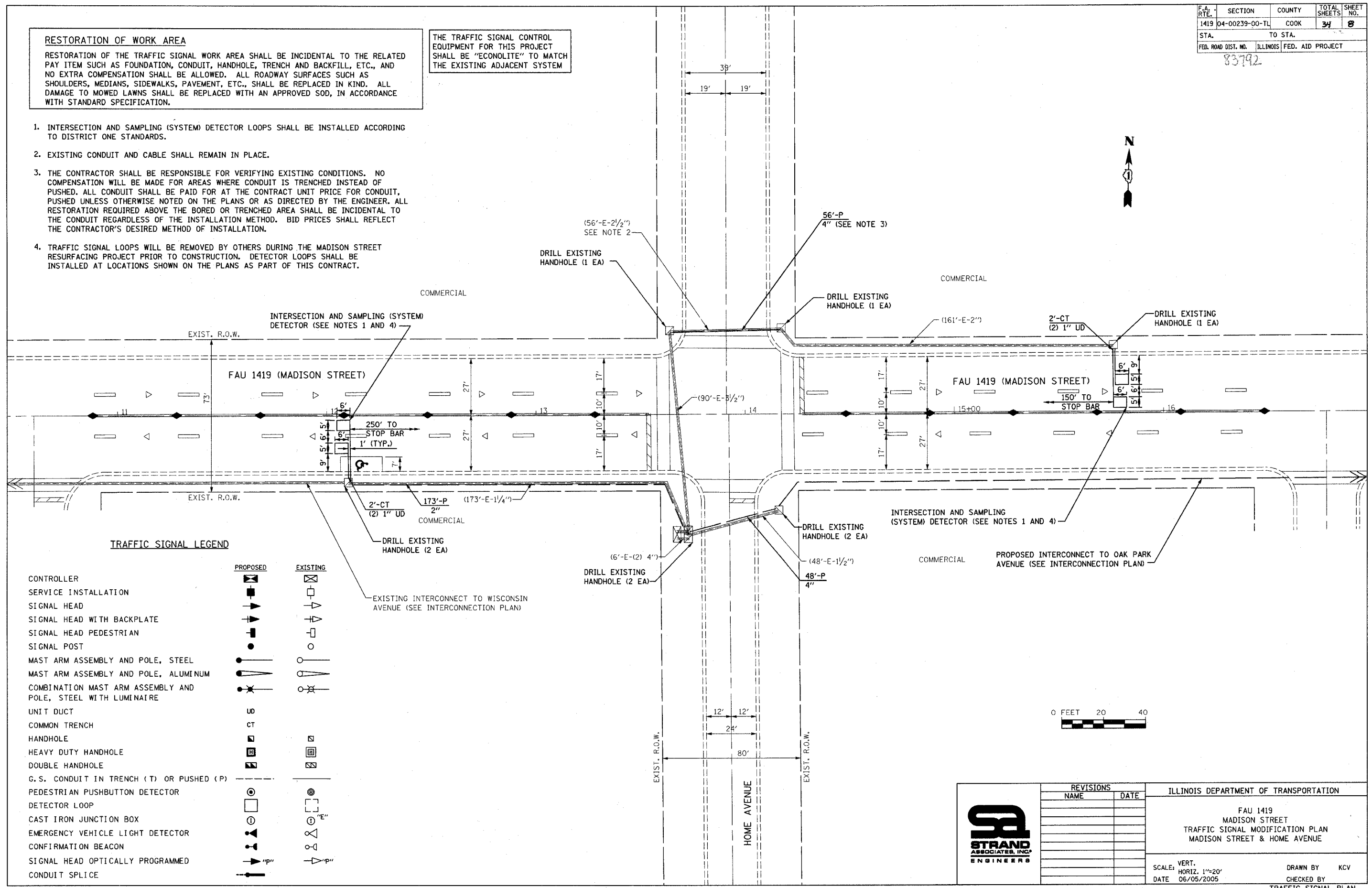
THE TRAFFIC SIGNAL CONTROL EQUIPMENT FOR THIS PROJECT SHALL BE "ECONOLITE" TO MATCH THE EXISTING ADJACENT SYSTEM

- INTERSECTION AND SAMPLING (SYSTEM) DETECTOR LOOPS SHALL BE INSTALLED ACCORDING TO DISTRICT ONE STANDARDS.
- EXISTING CONDUIT AND CABLE SHALL REMAIN IN PLACE.
- THE CONTRACTOR SHALL BE RESPONSIBLE FOR VERIFYING EXISTING CONDITIONS. NO COMPENSATION WILL BE MADE FOR AREAS WHERE CONDUIT IS TRENCHED INSTEAD OF PUSHED. ALL CONDUIT SHALL BE PAID FOR AT THE CONTRACT UNIT PRICE FOR CONDUIT, PUSHED UNLESS OTHERWISE NOTED ON THE PLANS OR AS DIRECTED BY THE ENGINEER. ALL RESTORATION REQUIRED ABOVE THE BORED OR TRENCHED AREA SHALL BE INCIDENTAL TO THE CONDUIT REGARDLESS OF THE INSTALLATION METHOD. BID PRICES SHALL REFLECT THE CONTRACTOR'S DESIRED METHOD OF INSTALLATION.
- TRAFFIC SIGNAL LOOPS WILL BE REMOVED BY OTHERS DURING THE MADISON STREET RESURFACING PROJECT PRIOR TO CONSTRUCTION. DETECTOR LOOPS SHALL BE INSTALLED AT LOCATIONS SHOWN ON THE PLANS AS PART OF THIS CONTRACT.

TIME: 105227 PM

DATE: 06/05/2005

FILENAME: s:\@sm\751-800\704\432\micro\modem\modem.dgn



TRAFFIC SIGNAL LEGEND

	PROPOSED	EXISTING
CONTROLLER	[Symbol]	[Symbol]
SERVICE INSTALLATION	[Symbol]	[Symbol]
SIGNAL HEAD	[Symbol]	[Symbol]
SIGNAL HEAD WITH BACKPLATE	[Symbol]	[Symbol]
SIGNAL HEAD PEDESTRIAN	[Symbol]	[Symbol]
SIGNAL POST	[Symbol]	[Symbol]
MAST ARM ASSEMBLY AND POLE, STEEL	[Symbol]	[Symbol]
MAST ARM ASSEMBLY AND POLE, ALUMINUM	[Symbol]	[Symbol]
COMBINATION MAST ARM ASSEMBLY AND POLE, STEEL WITH LUMINAIRE	[Symbol]	[Symbol]
UNIT DUCT	[Symbol]	[Symbol]
COMMON TRENCH	[Symbol]	[Symbol]
HANDHOLE	[Symbol]	[Symbol]
HEAVY DUTY HANDHOLE	[Symbol]	[Symbol]
DOUBLE HANDHOLE	[Symbol]	[Symbol]
G.S. CONDUIT IN TRENCH (T) OR PUSHED (P)	[Symbol]	[Symbol]
PEDESTRIAN PUSHBUTTON DETECTOR	[Symbol]	[Symbol]
DETECTOR LOOP	[Symbol]	[Symbol]
CAST IRON JUNCTION BOX	[Symbol]	[Symbol]
EMERGENCY VEHICLE LIGHT DETECTOR	[Symbol]	[Symbol]
CONFIRMATION BEACON	[Symbol]	[Symbol]
SIGNAL HEAD OPTICALLY PROGRAMMED	[Symbol]	[Symbol]
CONDUIT SPLICE	[Symbol]	[Symbol]



REVISIONS	
NAME	DATE

ILLINOIS DEPARTMENT OF TRANSPORTATION

FAU 1419
MADISON STREET
TRAFFIC SIGNAL MODIFICATION PLAN
MADISON STREET & HOME AVENUE

SCALE: VERT. 1"=20'
HORIZ. 1"=20'
DATE 06/05/2005

DRAWN BY KCV
CHECKED BY
TRAFFIC SIGNAL PLAN