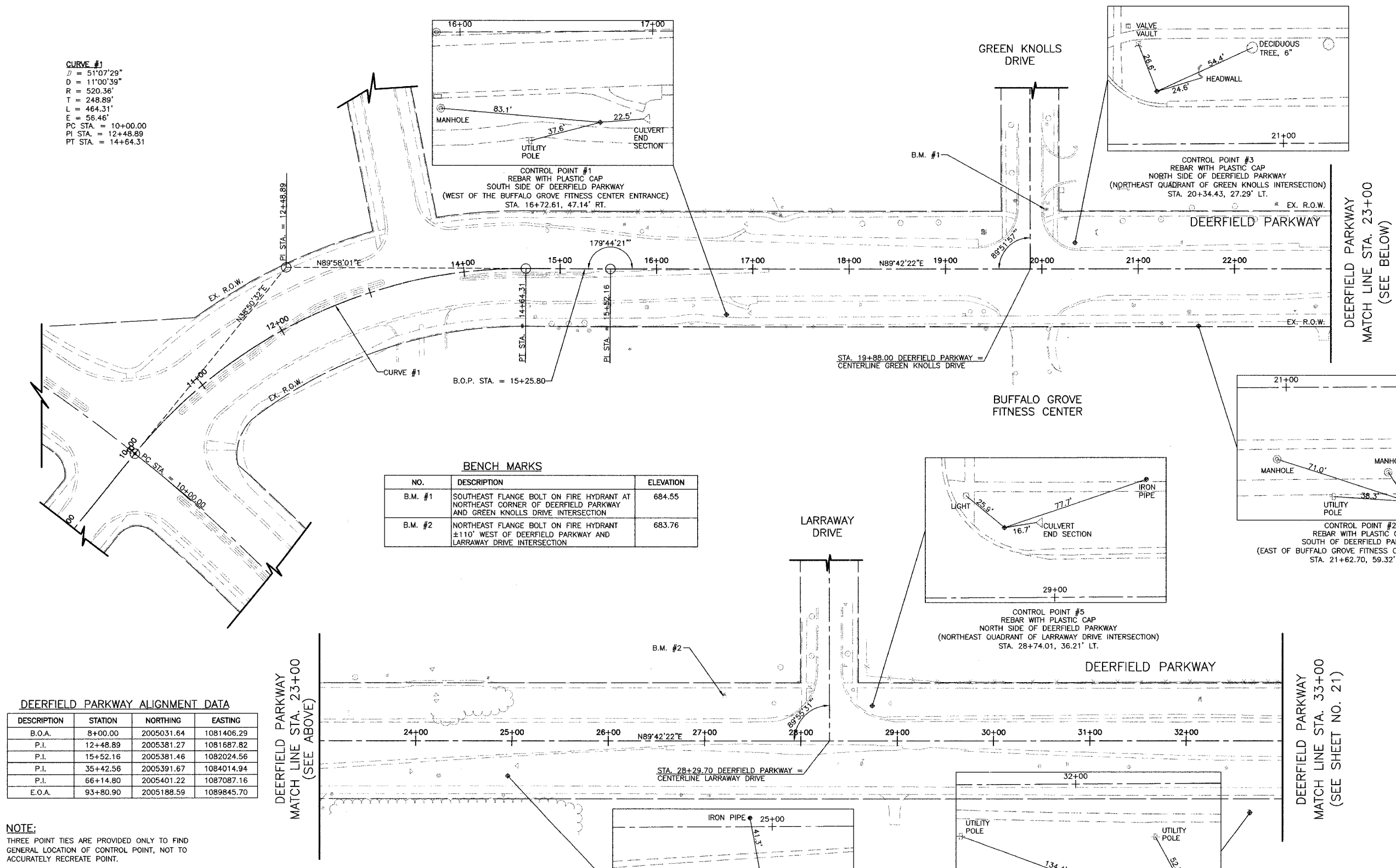


FILE #	SECTION	COUNTY	TOTAL SHEETS	SHEET NO.
CH	A47	LAKE	176	20
STA.	10+00	TO STA.	33+00	
03-00088-00-PP	LANE	SURFACE TRANSPORTATION FUNDING		
CONTRACT NUMBER 83807				

CURVE #1
 D = 51°07'29"
 D = 11°00'39"
 R = 520.36'
 T = 248.89'
 L = 464.31'
 E = 56.46'
 PC STA. = 10+00.00
 PI STA. = 12+48.89
 PT STA. = 14+64.31



BENCH MARKS

NO.	DESCRIPTION	ELEVATION
B.M. #1	SOUTHEAST FLANGE BOLT ON FIRE HYDRANT AT NORTHEAST CORNER OF DEERFIELD PARKWAY AND GREEN KNOLLS DRIVE INTERSECTION	684.55
B.M. #2	NORTHEAST FLANGE BOLT ON FIRE HYDRANT ±110' WEST OF DEERFIELD PARKWAY AND LARRAWAY DRIVE INTERSECTION	683.76

DEERFIELD PARKWAY ALIGNMENT DATA

DESCRIPTION	STATION	NORTHING	EASTING
B.O.A.	8+00.00	2005031.64	1081406.29
P.I.	12+48.89	2005381.27	1081687.82
P.I.	15+52.16	2005381.46	1082024.56
P.I.	35+42.56	2005391.67	1084014.94
P.I.	66+14.80	2005401.22	1087087.16
E.O.A.	93+80.90	2005188.59	1089845.70

NOTE:
 THREE POINT TIES ARE PROVIDED ONLY TO FIND GENERAL LOCATION OF CONTROL POINT, NOT TO ACCURATELY RECREATE POINT.

CONTROL POINTS

C.P. #	NORTHING	EASTING	STATION	OFFSET	ELEVATION
1	2005334.94	1082145.26	16+72.61	47.14' RT.	688.95
2	2005325.27	1082635.40	21+62.70	59.32' RT.	685.19
3	2005411.22	1082506.69	20+34.43	27.29' LT.	683.85
4	2005350.19	1082968.19	24+95.61	36.11' RT.	681.90
5	2005424.45	1083346.21	28+74.01	36.21' LT.	682.99
6	2005315.84	1083738.78	32+66.01	74.41' RT.	687.63

NOTES:
 EXISTING ROADWAY CONFIGURATION SHOWN
 B.O.A. = BEGINNING OF ALIGNMENT
 B.O.P. = BEGINNING OF PROJECT
 P.C. = POINT OF CURVATURE
 P.C.C. = POINT OF COMMON CURVATURE
 P.T. = POINT OF TANGENT
 P.I. = POINT OF INTERSECTION
 E.O.A. = END OF ALIGNMENT
 E.O.P. = END OF PROJECT
 C.P. = CONTROL POINT
 B.M. = BENCH MARK

REVISIONS

NAME	DATE

VILLAGE OF BUFFALO GROVE
ALIGNMENT, TIES AND BENCHMARKS
 DEERFIELD PARKWAY IMPROVEMENT
 STA. 10+00 TO 33+00

DATE: 6/2/2005
 DESIGNED BY: RTM
 TECHNICIAN: JRR
 CHECKED BY: MLH

BID SET