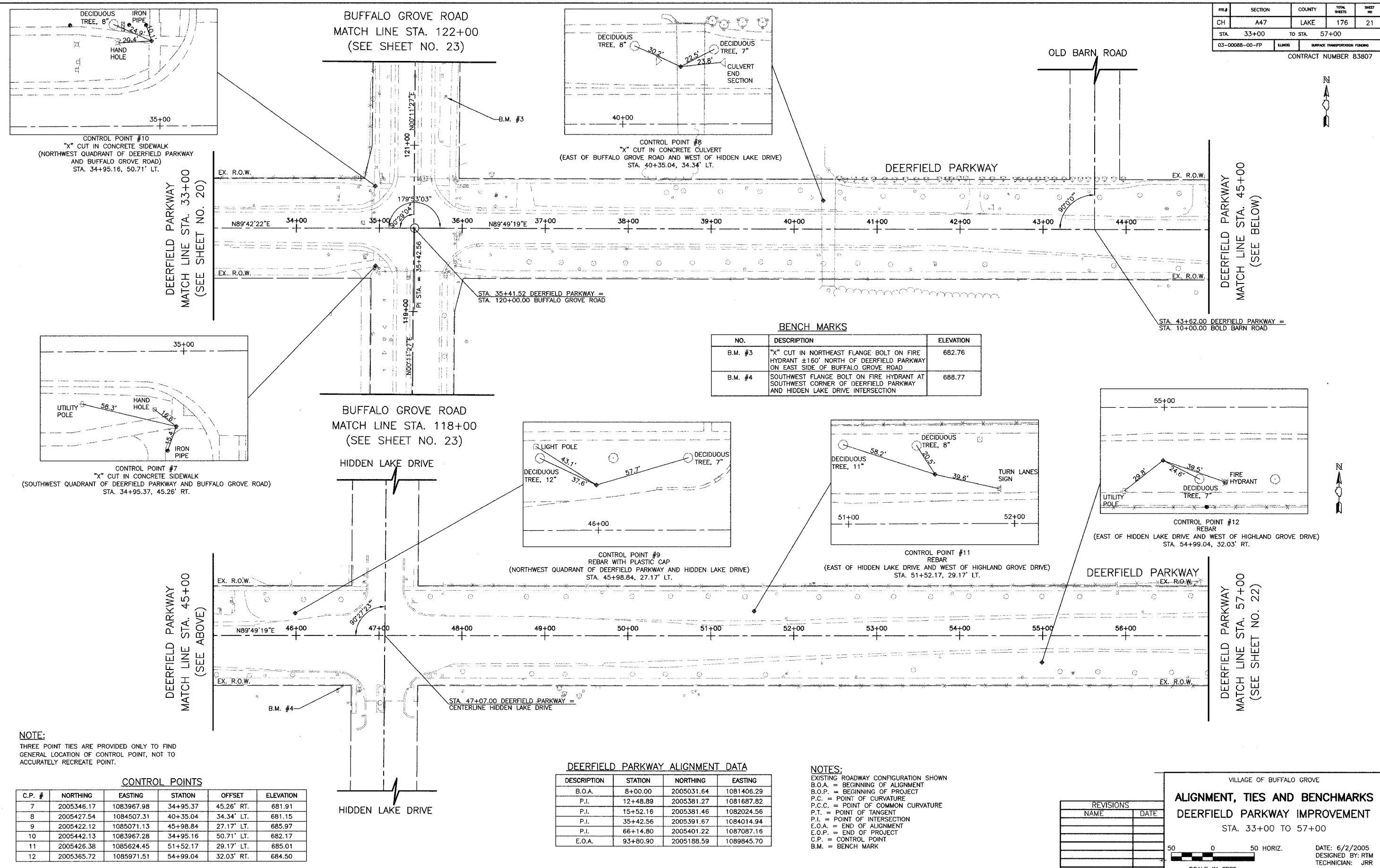


FILE #	SECTION	COUNTY	TOTAL SHEETS	SHEET NO.
CH	A47	LAKE	176	21
STA. 33+00		TO STA. 57+00		
03-00088-00-FP		ELANCO	SURFACE TRANSPORTATION FUNDING	
CONTRACT NUMBER 83807				



**BENCH MARKS**

NO.	DESCRIPTION	ELEVATION
B.M. #3	"X" CUT IN NORTHEAST FLANGE BOLT ON FIRE HYDRANT ±160' NORTH OF DEERFIELD PARKWAY ON EAST SIDE OF BUFFALO GROVE ROAD	682.76
B.M. #4	SOUTHWEST FLANGE BOLT ON FIRE HYDRANT AT SOUTHWEST CORNER OF DEERFIELD PARKWAY AND HIDDEN LAKE DRIVE INTERSECTION	688.77

**DEERFIELD PARKWAY ALIGNMENT DATA**

DESCRIPTION	STATION	NORTHING	EASTING
B.O.A.	8+00.00	2005031.64	1081406.29
P.I.	12+48.89	2005381.27	1081687.82
P.I.	15+52.16	2005381.46	1082024.56
P.I.	35+42.56	2005391.67	1084014.94
P.I.	66+14.80	2005401.22	1087087.16
E.O.A.	93+80.90	2005188.59	1089845.70

**NOTE:**  
THREE POINT TIES ARE PROVIDED ONLY TO FIND GENERAL LOCATION OF CONTROL POINT, NOT TO ACCURATELY RECREATE POINT.

**CONTROL POINTS**

C.P. #	NORTHING	EASTING	STATION	OFFSET	ELEVATION
7	2005346.17	1083967.98	34+95.37	45.26' RT.	681.91
8	2005427.54	1084507.31	40+35.04	34.34' LT.	681.15
9	2005422.12	1085071.13	45+98.84	27.17' LT.	685.97
10	2005442.13	1083967.28	34+95.16	50.71' LT.	682.17
11	2005426.38	1085624.45	51+52.17	29.17' LT.	685.01
12	2005365.72	1085971.51	54+99.04	32.03' RT.	684.50

**NOTES:**  
EXISTING ROADWAY CONFIGURATION SHOWN  
B.O.A. = BEGINNING OF ALIGNMENT  
B.O.P. = BEGINNING OF PROJECT  
P.C. = POINT OF CURVATURE  
P.C.C. = POINT OF COMMON CURVATURE  
P.T. = POINT OF TANGENT  
P.I. = POINT OF INTERSECTION  
E.O.A. = END OF ALIGNMENT  
E.O.P. = END OF PROJECT  
C.P. = CONTROL POINT  
B.M. = BENCH MARK

**REVISIONS**

NAME	DATE

VILLAGE OF BUFFALO GROVE  
**ALIGNMENT, TIES AND BENCHMARKS**  
**DEERFIELD PARKWAY IMPROVEMENT**  
STA. 33+00 TO 57+00

DATE: 6/2/2005  
DESIGNED BY: RTM  
TECHNICIAN: JRR  
CHECKED BY: MLH