

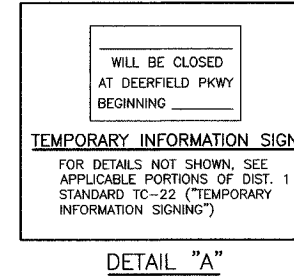
SECTION	COUNTY	TOTAL SHEETS	SHEET NO.
CH A47	LAKE	176	34
STA. 57+00	TO STA. 81+00		
03-00088-00-FP		SURFACE TRANSPORTATION PAVING	
CONTRACT NUMBER 83807			

NOTE: SEE SHEET 38 FOR TYPICAL SECTIONS & CONSTRUCTION SEQUENCE.

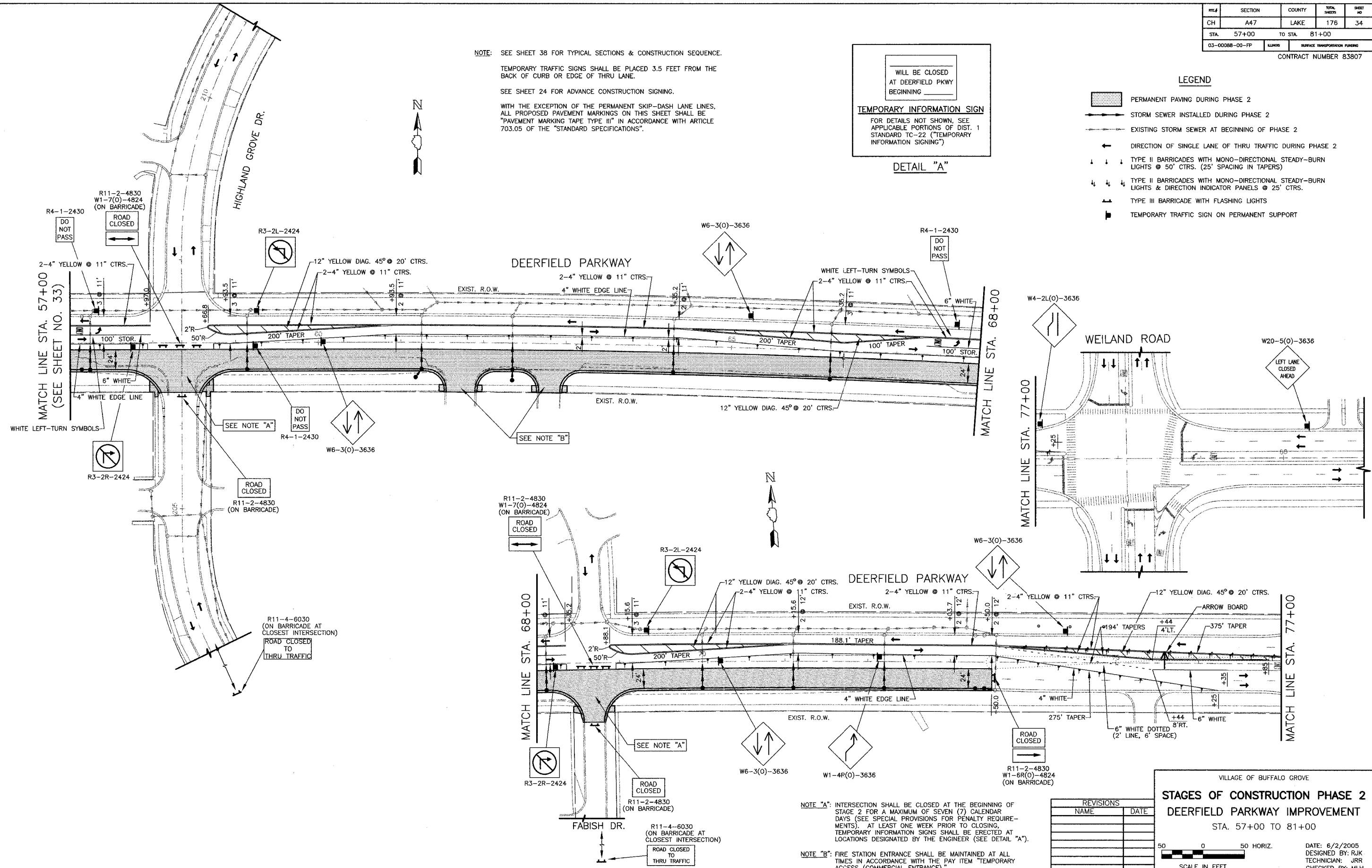
TEMPORARY TRAFFIC SIGNS SHALL BE PLACED 3.5 FEET FROM THE BACK OF CURB OR EDGE OF THRU LANE.

SEE SHEET 24 FOR ADVANCE CONSTRUCTION SIGNING.

WITH THE EXCEPTION OF THE PERMANENT SKIP-DASH LANE LINES, ALL PROPOSED PAVEMENT MARKINGS ON THIS SHEET SHALL BE "PAVEMENT MARKING TAPE TYPE III" IN ACCORDANCE WITH ARTICLE 703.05 OF THE "STANDARD SPECIFICATIONS".



- LEGEND**
- PERMANENT PAVING DURING PHASE 2
 - STORM SEWER INSTALLED DURING PHASE 2
 - EXISTING STORM SEWER AT BEGINNING OF PHASE 2
 - DIRECTION OF SINGLE LANE OF THRU TRAFFIC DURING PHASE 2
 - TYPE II BARRICADES WITH MONO-DIRECTIONAL STEADY-BURN LIGHTS @ 50' CTRS. (25' SPACING IN TAPERS)
 - TYPE II BARRICADES WITH MONO-DIRECTIONAL STEADY-BURN LIGHTS & DIRECTION INDICATOR PANELS @ 25' CTRS.
 - TYPE III BARRICADE WITH FLASHING LIGHTS
 - TEMPORARY TRAFFIC SIGN ON PERMANENT SUPPORT



NOTE "A": INTERSECTION SHALL BE CLOSED AT THE BEGINNING OF STAGE 2 FOR A MAXIMUM OF SEVEN (7) CALENDAR DAYS (SEE SPECIAL PROVISIONS FOR PENALTY REQUIREMENTS). AT LEAST ONE WEEK PRIOR TO CLOSING, TEMPORARY INFORMATION SIGNS SHALL BE ERECTED AT LOCATIONS DESIGNATED BY THE ENGINEER (SEE DETAIL "A").

NOTE "B": FIRE STATION ENTRANCE SHALL BE MAINTAINED AT ALL TIMES IN ACCORDANCE WITH THE PAY ITEM "TEMPORARY ACCESS (COMMERCIAL ENTRANCE)".

REVISIONS	
NAME	DATE

VILLAGE OF BUFFALO GROVE

STAGES OF CONSTRUCTION PHASE 2

DEERFIELD PARKWAY IMPROVEMENT

STA. 57+00 TO 81+00

DATE: 6/2/2005
DESIGNED BY: RJK
TECHNICIAN: JRR
CHECKED BY: MLH