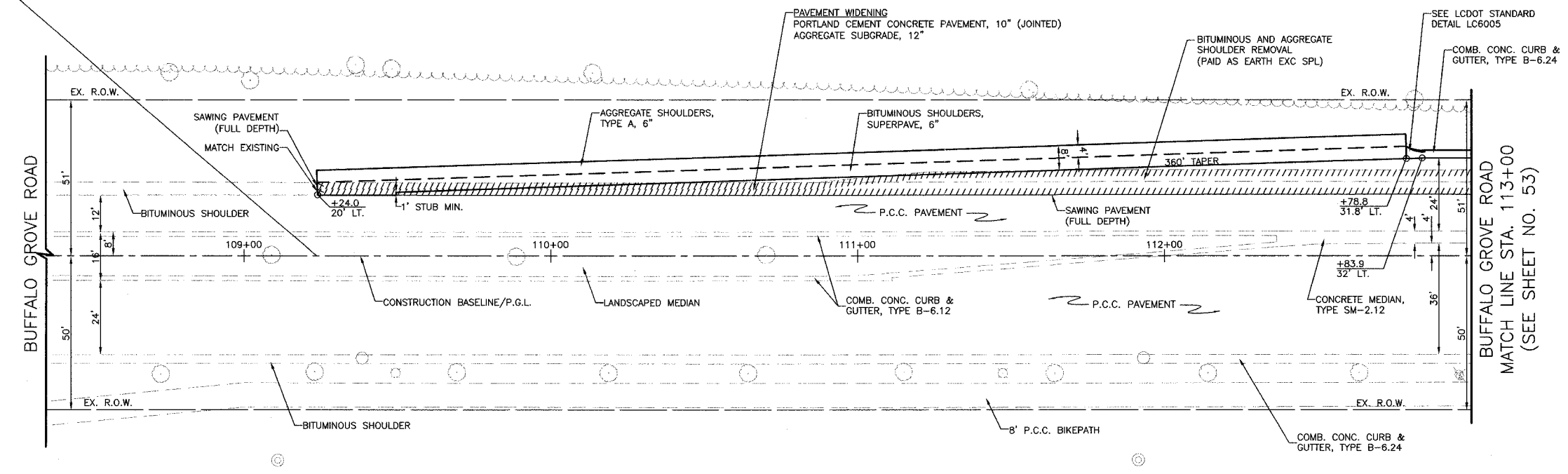


REF #	SECTION	COUNTY	TOTAL SHEETS	SHEET NO
CH	A47	LAKE	176	52
STA.	108+50	TO STA.	113+00	
03-00088-00-FP		BLINDS	SURFACE TRANSPORTATION FUNDING	

CONTRACT NUMBER 83807

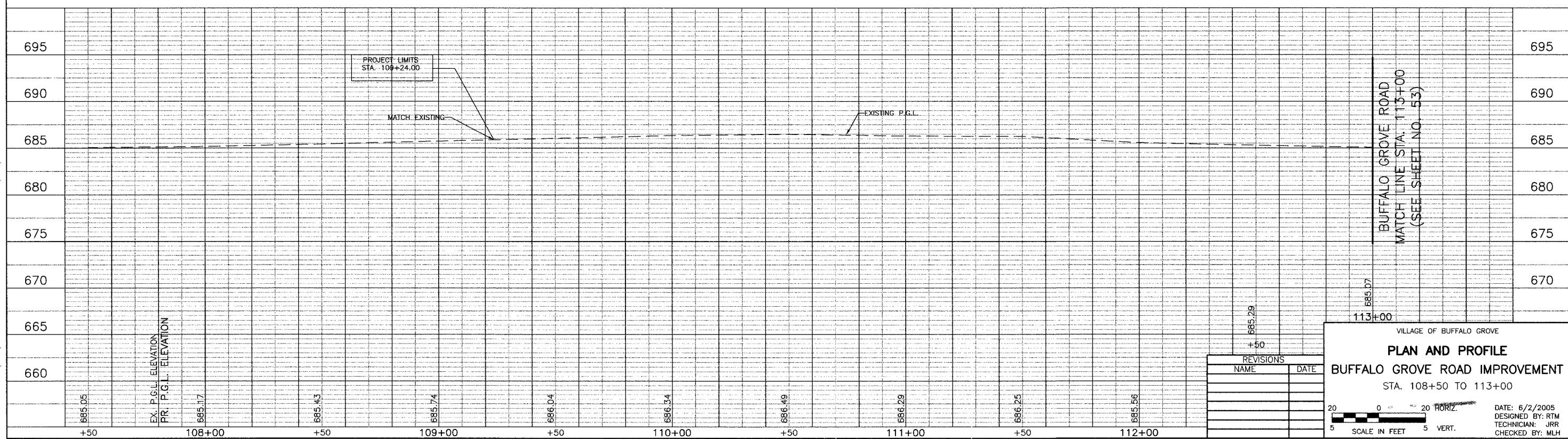
PROJECT LIMITS
STA. 109+24.00



GENERAL NOTES:
 PAVEMENT JOINTS IN PORTLAND CEMENT CONCRETE PAVEMENT WIDENING SHALL BE SPACED TO MATCH EXISTING PAVEMENT JOINTS.
 SAWED, TRANSVERSE CONTRACTION JOINTS WITH DOWEL BAR ASSEMBLIES SHALL BE CONSTRUCTED IN PORTLAND CEMENT CONCRETE PAVEMENT WIDENING AS EXTENSIONS OF EXISTING CRACKS IN THE ADJACENT PAVEMENT WHERE DIRECTED BY THE ENGINEER.

LEFT PROPOSED EDGE OF PAVEMENT TABLE

STATION	OFFSET	ELEVATION
109+50	20.0' LT.	684.21
110+00	22.5' LT.	684.87
110+50	24.2' LT.	685.13
111+00	25.9' LT.	685.31
111+50	27.5' LT.	685.22
112+00	29.2' LT.	685.09
112+50	30.9' LT.	684.82
113+00	32.0' LT.	684.55



REVISIONS

NAME	DATE

VILLAGE OF BUFFALO GROVE
PLAN AND PROFILE
BUFFALO GROVE ROAD IMPROVEMENT
 STA. 108+50 TO 113+00

DATE: 6/2/2005
 DESIGNED BY: RTM
 TECHNICIAN: JRR
 CHECKED BY: MLH

SCALE IN FEET: 1" = 20' HORIZ., 1" = 5' VERT.

BID SET