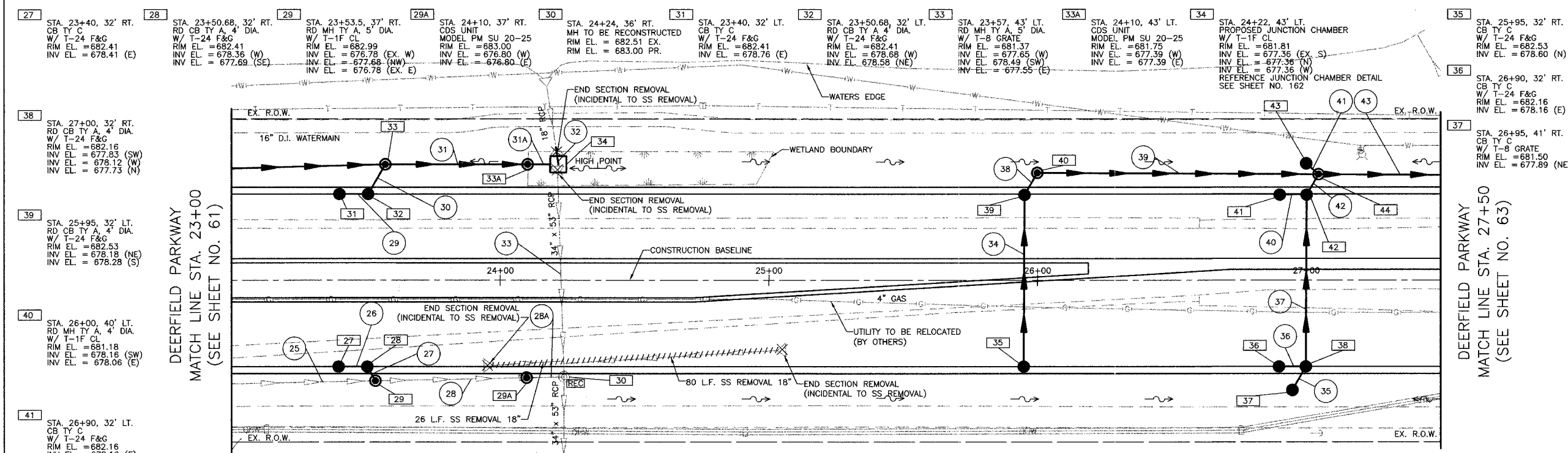
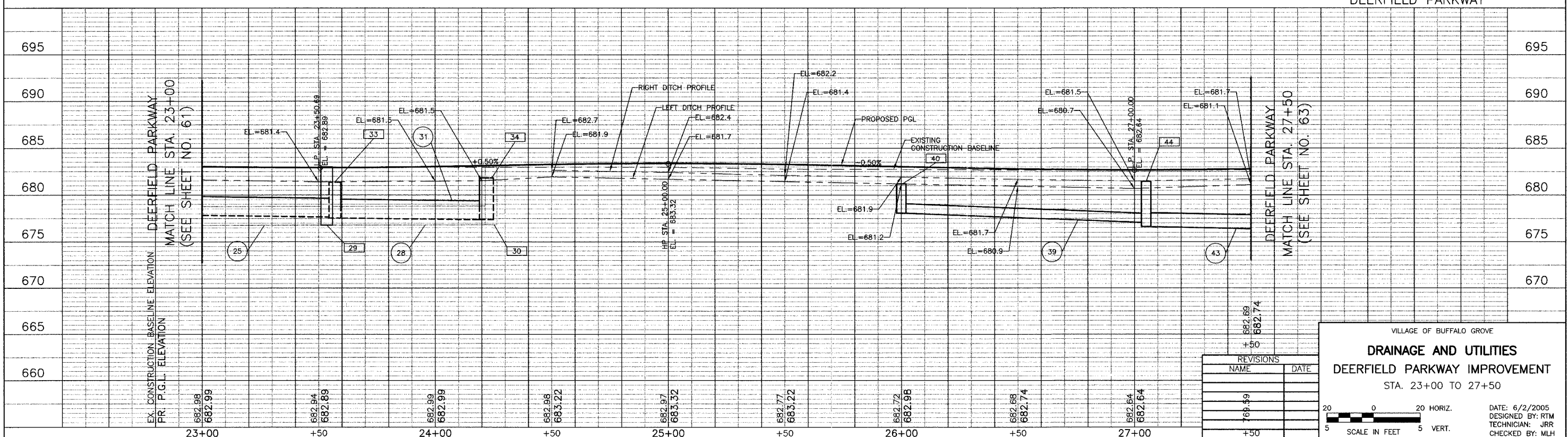


CH	SECTION	COUNTY	TOTAL SHEETS	SHEET NO.
A47	LAKE	LAKE	176	62
STA. 23+00		TO STA. 27+50		
03-00088-00-PP		SURFACE TRANSPORTATION FUNDING		
CONTRACT NUMBER 83807				



- 25 EXISTING 24" SS
- 26 9'-12" SS, CL. A, TY 2 @ 0.50% T.B.F. = 2 CU. YD.
- 27 2'-12" SS, CL. A, TY 2 @ 0.50% T.B.F. = 1 CU. YD.
- 28 EXISTING 24" SS
- 28A EXISTING 24" SS
- 29 8'-12" SS, CL. A, TY 1 @ 1.00% T.B.F. = 2 CU. YD.
- 30 9'-12" SS, CL. A, TY 1 @ 1.00% T.B.F. = 2 CU. YD.
- 31 48"-SS, TYPE 1, REINF. CONC. ELLIPTICAL PIPE, SPAN 38' RISE 24' @ 0.33%
- 31A 8"-SS, TYPE 1, REINF. CONC. ELLIPTICAL PIPE, SPAN 38' RISE 24' @ 0.33%
- 32 4'-18" SS, CL. A, TY 1 @ 0.50%
- 33 EXISTING 36" X 54" SS
- 34 64'-12" SS, CL. A, TY 1 @ 0.50% T.B.F. = 11 CU. YD.
- 35 6'-12" SS, CL. A, TY 2 @ 1.00% T.B.F. = 2 CU. YD.
- 36 7'-12" SS, CL. A, TY 1 @ 0.50% T.B.F. = 1 CU. YD.
- 37 64'-12" SS, CL. A, TY 2 @ 1.00% T.B.F. = 15 CU. YD.
- 38 5'-12" SS, CL. A, TY 1 @ 0.50% T.B.F. = 1 CU. YD.
- 39 100'-12" STORM SEWER, SPECIAL @ 1.00%
- 40 7'-12" SS, CL. A, TY 2 @ 0.50% T.B.F. = 2 CU. YD.
- 41 3'-12" STORM SEWER, SPECIAL @ 1.00%
- 42 5'-15" SS, CL. A, TY 2 @ 0.50% T.B.F. = 2 CU. YD.
- 43 63'-18" STORM SEWER, SPECIAL @ 0.50%

*SEE FIRST DRAINAGE AND UTILITY SHEET FOR NOTES



VILLAGE OF BUFFALO GROVE
DRAINAGE AND UTILITIES
 DEERFIELD PARKWAY IMPROVEMENT
 STA. 23+00 TO 27+50

REVISIONS	
NAME	DATE

DATE: 6/2/2005
 DESIGNED BY: RTM
 TECHNICIAN: JRR
 CHECKED BY: MLH

20 0 20 HORIZ.
 5 5 VERT.
 SCALE IN FEET

BID SET