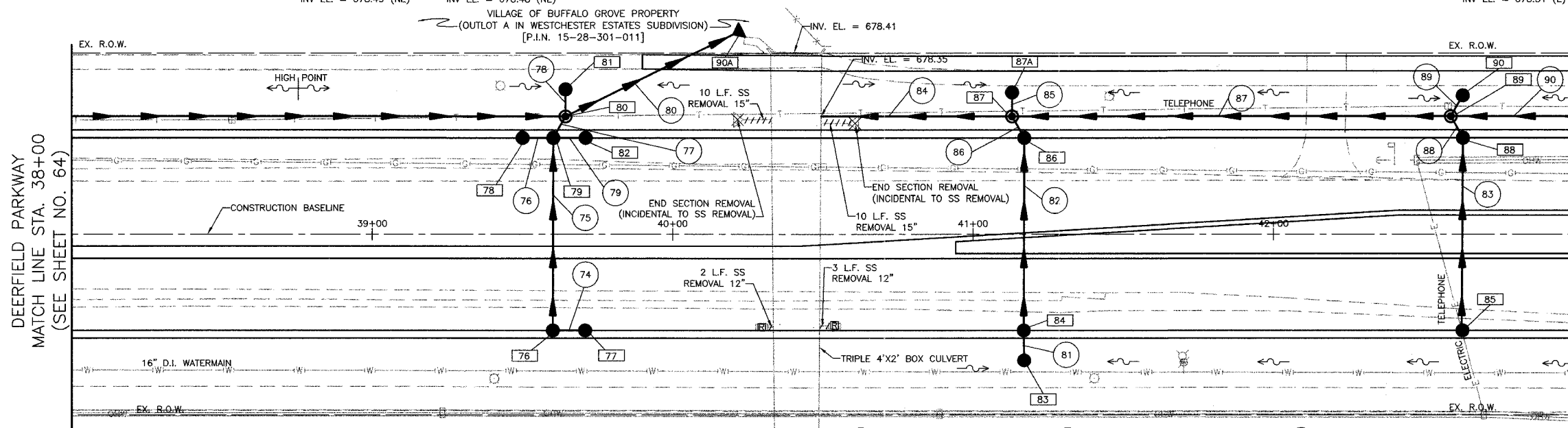


| SECTION | COUNTY | TOTAL SHEETS | SHEET NO. |
|---------|--------|--------------|-----------|
| A47     | LAKE   | 176          | 65        |

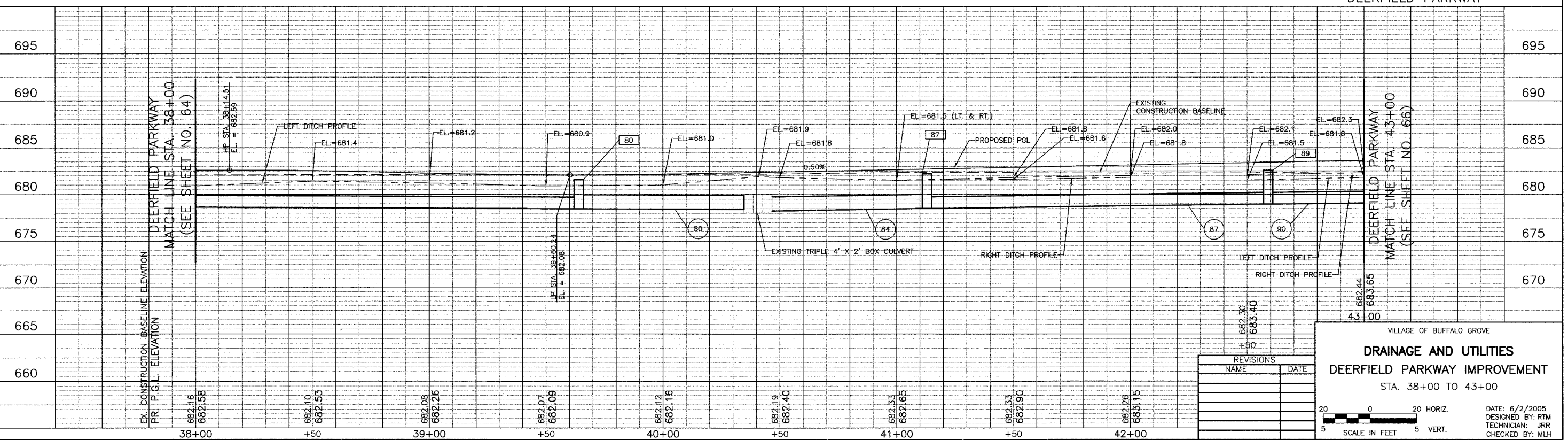
|    |  |    |  |    |  |    |  |    |  |    |   |    |  |    |   |    |   |    |  |    |  |    |   |
|----|--|----|--|----|--|----|--|----|--|----|---|----|--|----|---|----|---|----|--|----|--|----|---|
| 76 | STA. 39+60.24, 32' RT. CB TY A, 4' DIA. W/ T-24 F&G RIM EL. = 681.60 INV. EL. = 678.77 (E) INV. EL. = 678.77 (N) | 77 | STA. 39+71, 32' RT. CB TY C W/ T-24 F&G RIM EL. = 681.61 INV. EL. = 678.81 (W) | 78 | STA. 39+50, 32' LT. CB TY C W/ T-24 F&G RIM EL. = 681.61 INV. EL. = 678.52 (E) | 79 | STA. 39+60.24, 32' LT. RD CB TY A, 4' DIA. W/ T-24 F&G RIM EL. = 681.60 INV. EL. = 678.43 (E) INV. EL. = 678.43 (W) INV. EL. = 678.49 (S) INV. EL. = 678.49 (NE) | 80 | STA. 39+64, 39' LT. MH TY A, 8' DIA. W/ T-1F CL RIM EL. = 681.57 INV. EL. = 678.48 (W) INV. EL. = 678.48 (N) INV. EL. = 678.48 (SW) INV. EL. = 678.48 (NE) | 81 | STA. 39+64, 48' LT. CB TY C W/ T-8 GRATE RIM EL. = 680.83 INV. EL. = 678.53 (S) | 82 | STA. 39+71, 32' LT. CB TY C W/ T-24 F&G RIM EL. = 681.61 INV. EL. = 678.53 (W) | 83 | STA. 41+17, 42' RT. CB TY C W/ T-8 GRATE RIM EL. = 681.42 INV. EL. = 679.22 (N) | 84 | STA. 41+17, 32' RT. CB TY A, 4' DIA. W/ T-24 F&G RIM EL. = 682.25 INV. EL. = 679.17 (S) INV. EL. = 679.17 (N) | 85 | STA. 42+63, 32' RT. CB TY C W/ T-24 F&G RIM EL. = 682.98 INV. EL. = 679.62 (N) | 86 | STA. 41+17, 32' LT. CB TY A, 4' DIA. W/ T-24 F&G RIM EL. = 682.25 INV. EL. = 678.53 (S) INV. EL. = 678.53 (NW) | 87 | STA. 41+13, 39' RT. MH TY A, 5' DIA. W/ T-1F CL RIM EL. = 682.20 INV. EL. = 678.51 (W) INV. EL. = 678.51 (N) INV. EL. = 678.51 (SE) INV. EL. = 678.51 (E) |
|----|--|----|--|----|--|----|--|----|--|----|---|----|--|----|---|----|---|----|--|----|--|----|---|

|     |  |
|-----|--|
| 87A | STA. 41+13, 47' LT. CB TY C W/ T-8 GRATE RIM EL. = 681.45 INV. EL. = 678.56 (S)  |
| 88  | STA. 42+63, 32' LT. CB TY A, 4' DIA. W/ T-24 F&G RIM EL. = 682.98 INV. EL. = 678.98 (S) INV. EL. = 678.98 (SE)                         |
| 89  | STA. 42+59, 39' LT. RD MH TY A, 4' DIA. W/ T-1F CL RIM EL. = 682.57 INV. EL. = 678.96 (W) INV. EL. = 678.96 (NE) INV. EL. = 678.96 (E) |
| 90  | STA. 42+63, 46' LT. CB TY C W/ T-8 GRATE RIM EL. = 681.47 INV. EL. = 679.01 (SW)   |
| 90A | STA. 40+23, 68' LT. PRECAST REINFORCED CONC. FLARED END SECTION, EQUIV. ROUND SIZE 36" W/ GRATING INV. EL. = 678.41                    |



|    |   |    |   |    |  |
|----|---|----|---|----|--|
| 74 | 8'-12" SS, CL. A, TY 1 @ 1.00% T.B.F. = 2 CU. YD.   | 80 | 65'-SS, TYP 1, REINF. CONC. ELLIPTICAL PIPE, SPAN 45, RISE 29 @ 0.10% | 86 | 2'-12" SS, CL. A, TY 2 @ 1.00% T.B.F. = 1 CU. YD.    |
| 75 | 64'-12" SS, CL. A, TY 1 @ 0.44% T.B.F. = 16 CU. YD. | 81 | 5'-12" STORM SEWER, SPECIAL @ 1.00% T.B.F. = 1 CU. YD.                | 87 | 142'-18" SS, CL. A, TY 2 @ 0.32% T.B.F. = 19 CU. YD. |
| 76 | 7'-12" SS, CL. A, TY 1 @ 0.44% T.B.F. = 2 CU. YD.   | 82 | 64'-12" SS, CL. A, TY 2 @ 1.00% T.B.F. = 19 CU. YD.                   | 88 | 2'-12" SS, CL. A, TY 2 @ 1.00% T.B.F. = 1 CU. YD.    |
| 77 | 2'-12" SS, CL. A, TY 1 @ 0.44% T.B.F. = 1 CU. YD.   | 83 | 64'-12" SS, CL. A, TY 2 @ 1.00% T.B.F. = 14 CU. YD.                   | 89 | 5'-12" SS, CL. A, TY 1 @ 1.00%                       |
| 78 | 3'-12" SS, CL. A, TY 1 @ 1.00%                      | 84 | 62'-18" SS, CL. A, TY 2 @ 0.26%                                       | 90 | 142'-15" SS, CL. A, TY 2 @ 0.32%                     |
| 79 | 8'-12" SS, CL. A, TY 1 @ 0.44% T.B.F. = 2 CU. YD.   | 85 | 5'-12" SS, CL. A, TY 2 @ 1.00%  |    |  |

\*SEE FIRST DRAINAGE AND UTILITY SHEET FOR NOTES



| REVISIONS |      |
|-----------|------|
| NAME      | DATE |
|           |      |
|           |      |
|           |      |

VILLAGE OF BUFFALO GROVE  
**DRAINAGE AND UTILITIES**  
**DEERFIELD PARKWAY IMPROVEMENT**  
 STA. 38+00 TO 43+00

DATE: 6/2/2005  
 DESIGNED BY: RTM  
 TECHNICIAN: JRR  
 CHECKED BY: MLH

20 0 20 HORIZ.  
 5 5 VERT.  
 SCALE IN FEET

BID SET