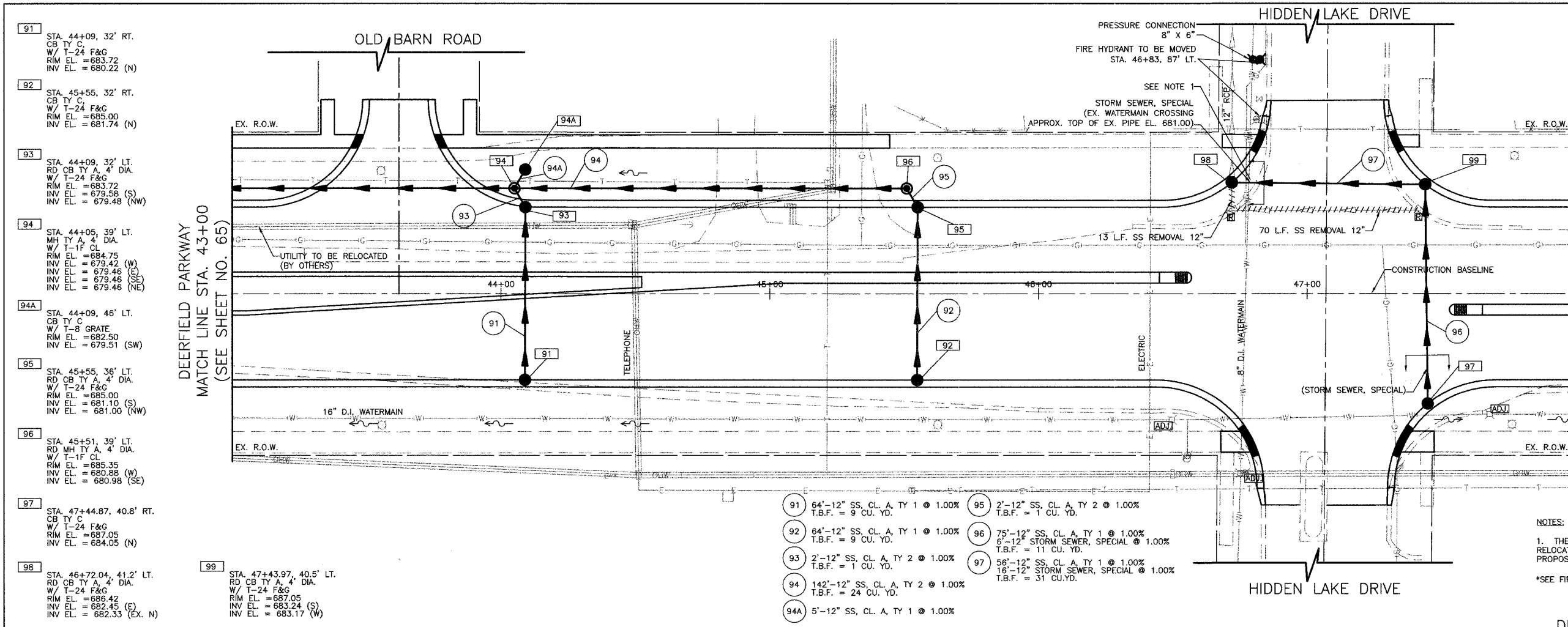


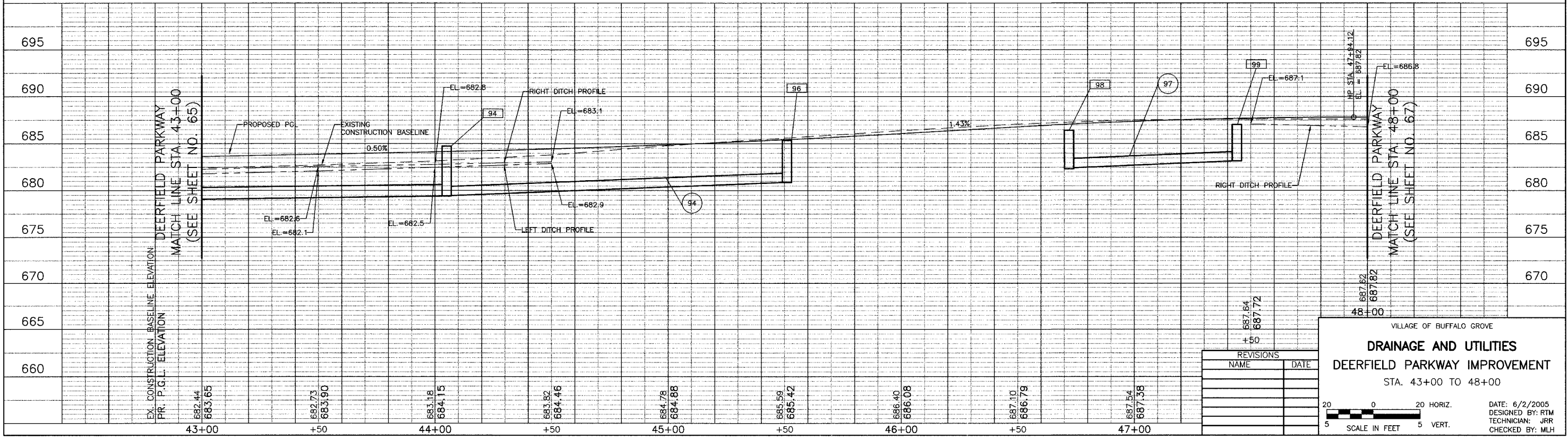
FILE #	SECTION	COUNTY	TOTAL SHEETS	SHEET NO.
CH	A47	LAKE	176	66
STA.	43+00	TO STA.	48+00	
03-00088-00-FP	BLANK	SURFACE TRANSPORTATION FUNDING		
CONTRACT NUMBER 83807				



- 91 STA. 44+09, 32' RT. CB TY C. W/ T-24 F&G. RIM EL. = 683.72. INV EL. = 680.22 (N)
- 92 STA. 45+55, 32' RT. CB TY C. W/ T-24 F&G. RIM EL. = 685.00. INV EL. = 681.74 (N)
- 93 STA. 44+09, 32' LT. RD CB TY A, 4' DIA. W/ T-24 F&G. RIM EL. = 683.72. INV EL. = 679.56 (S). INV EL. = 679.48 (NW)
- 94 STA. 44+05, 39' LT. MH TY A, 4' DIA. W/ T-1F CL. RIM EL. = 684.75. INV EL. = 679.42 (W). INV EL. = 679.46 (E). INV EL. = 679.46 (SE). INV EL. = 679.46 (NE)
- 94A STA. 44+09, 46' LT. CB TY C. W/ T-3 GRATE. RIM EL. = 682.50. INV EL. = 679.51 (SW)
- 95 STA. 45+55, 36' LT. RD CB TY A, 4' DIA. W/ T-24 F&G. RIM EL. = 685.00. INV EL. = 681.10 (S). INV EL. = 681.00 (NW)
- 96 STA. 45+51, 39' LT. RD MH TY A, 4' DIA. W/ T-1F CL. RIM EL. = 685.35. INV EL. = 680.86 (W). INV EL. = 680.96 (SE)
- 97 STA. 47+44.87, 40.8' RT. CB TY C. W/ T-24 F&G. RIM EL. = 687.05. INV EL. = 684.05 (N)
- 98 STA. 46+72.04, 41.2' LT. RD CB TY A, 4' DIA. W/ T-24 F&G. RIM EL. = 686.42. INV EL. = 682.45 (E). INV EL. = 682.33 (EX. N)
- 99 STA. 47+43.97, 40.5' LT. RD CB TY A, 4' DIA. W/ T-24 F&G. RIM EL. = 687.05. INV EL. = 683.24 (S). INV EL. = 683.17 (W)

- 91 64'-12" SS, CL. A, TY 1 @ 1.00%. T.B.F. = 9 CU. YD.
- 92 64'-12" SS, CL. A, TY 1 @ 1.00%. T.B.F. = 9 CU. YD.
- 93 2'-12" SS, CL. A, TY 2 @ 1.00%. T.B.F. = 1 CU. YD.
- 94 142'-12" SS, CL. A, TY 2 @ 1.00%. T.B.F. = 24 CU. YD.
- 94A 5'-12" SS, CL. A, TY 1 @ 1.00%
- 95 2'-12" SS, CL. A, TY 2 @ 1.00%. T.B.F. = 1 CU. YD.
- 96 75'-12" SS, CL. A, TY 1 @ 1.00%. 6'-12" STORM SEWER, SPECIAL @ 1.00%. T.B.F. = 11 CU. YD.
- 97 56'-12" SS, CL. A, TY 1 @ 1.00%. 16'-12" STORM SEWER, SPECIAL @ 1.00%. T.B.F. = 31 CU. YD.

NOTES:
 1. THE 8" AND/OR 16" WATER MAINS SHALL BE RELOCATED IF A CONFLICT EXISTS WITH THE PROPOSED STORM SEWER.
 *SEE FIRST DRAINAGE AND UTILITY SHEET FOR NOTES



REVISIONS	
NAME	DATE

VILLAGE OF BUFFALO GROVE
DRAINAGE AND UTILITIES
DEERFIELD PARKWAY IMPROVEMENT
 STA. 43+00 TO 48+00

DATE: 6/2/2005
 DESIGNED BY: RTM
 TECHNICIAN: JRR
 CHECKED BY: MLH

20 0 20 HORIZ.
 5 SCALE IN FEET 5 VERT.

BID SET