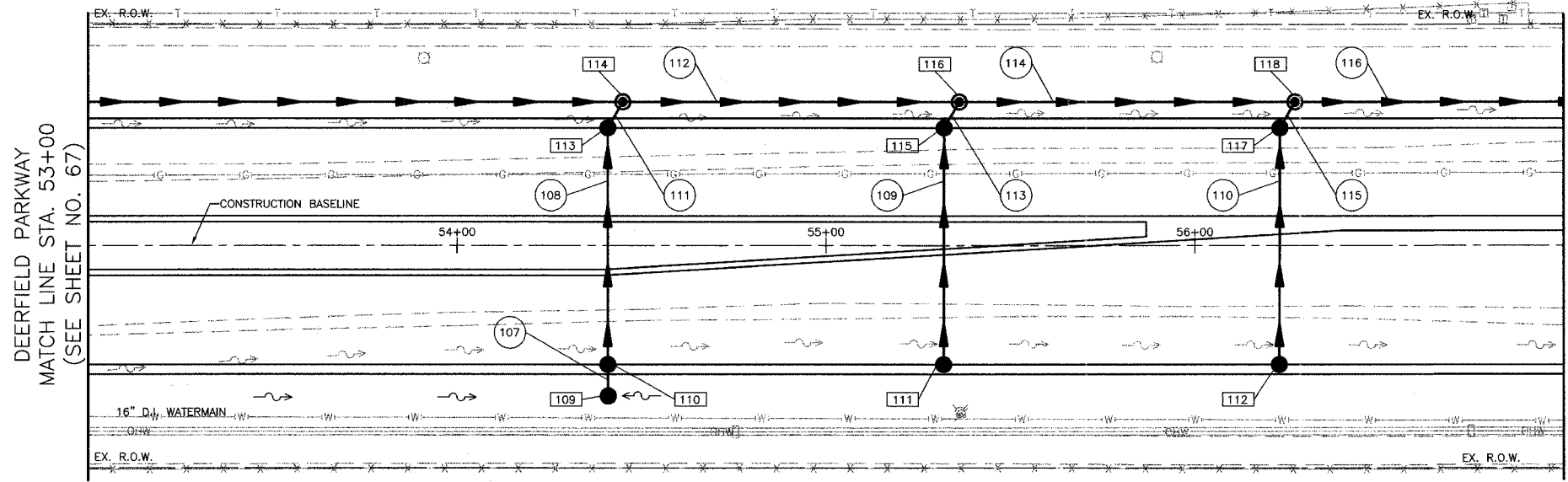


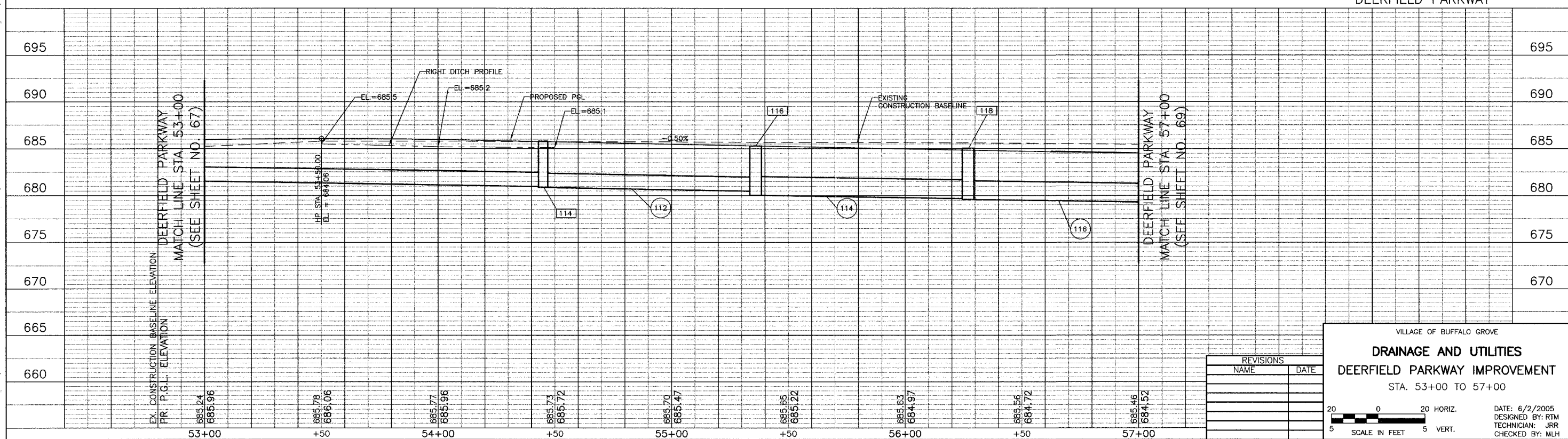
W.P.#	SECTION	COUNTY	TOTAL SHEETS	SHEET NO.
CH	A47	LAKE	176	68
STA. 53+00		TO STA. 57+00		
03-00085-00-FP		SURFACE TRANSPORTATION FUNDING		
CONTRACT NUMBER 83807				

109 STA. 54+41, 40.5' RT. CB TY C W/ T-8 GRATE RIM EL = 685.02 INV EL = 681.87 (N)	110 STA. 54+41, 32' RT. RD CB TY A, 4' DIA W/ T-24 F&G RIM EL = 685.28 INV EL = 681.85 (S) INV EL = 681.75 (N)	111 STA. 55+32, 32' RT. CB TY C W/ T-24 F&G RIM EL = 684.83 INV EL = 681.36 (N)	112 STA. 56+23, 32' RT. CB TY C W/ T-24 F&G RIM EL = 684.37 INV EL = 680.91 (N)	113 STA. 54+41, 32' LT. RD CB TY A, 4' DIA W/ T-24 F&G RIM EL = 685.28 INV EL = 681.43 (S) INV EL = 681.33 (NE)	114 STA. 54+45, 39' LT. RD MH TY A, 4' DIA W/ T-1F CL RIM EL = 685.79 INV EL = 680.97 (W) INV EL = 681.32 (SW) INV EL = 680.87 (E)	115 STA. 55+32, 32' LT. RD CB TY A, 4' DIA W/ T-24 F&G RIM EL = 684.83 INV EL = 681.04 (S) INV EL = 680.94 (NE)	116 STA. 55+36, 39' LT. RD MH TY A, 5' DIA W/ T-1F CL RIM EL = 685.28 INV EL = 680.48 (W) INV EL = 680.93 (SW) INV EL = 680.03 (E)	117 STA. 56+23, 32' LT. RD CB TY A, 4' DIA W/ T-24 F&G RIM EL = 684.37 INV EL = 680.59 (S) INV EL = 680.49 (NE)	118 STA. 56+27, 39' LT. RD MH TY A, 5' DIA W/ T-1F CL RIM EL = 685.04 INV EL = 679.68 (W) INV EL = 680.48 (SW) INV EL = 679.58 (E)
--	---	---	---	--	--	--	--	--	--



- 107 4'-12" STORM SEWER, SPECIAL @ 0.50%
T.B.F. = 1 CU. YD.
- 108 64'-12" SS, CL. A, TY 1 @ 0.50%
T.B.F. = 9 CU. YD.
- 109 64'-12" SS, CL. A, TY 1 @ 0.50%
T.B.F. = 9 CU. YD.
- 110 64'-12" SS, CL. A, TY 1 @ 0.50%
T.B.F. = 9 CU. YD.
- 111 2'-12" SS, CL. A, TY 2 @ 0.50%
T.B.F. = 1 CU. YD.
- 112 87'-18" SS, CL. A, TY 2 @ 0.45%
T.B.F. = 1 CU. YD.
- 113 2'-12" SS, CL. A, TY 1 @ 0.50%
T.B.F. = 1 CU. YD.
- 114 87'-24" SS, CL. A, TY 2 @ 0.40%
T.B.F. = 26 CU. YD.
- 115 2'-12" SS, CL. A, TY 2 @ 0.50%
T.B.F. = 1 CU. YD.
- 116 97'-24" SS, CL. A, TY 2 @ 0.40%
T.B.F. = 29 CU. YD.

*SEE FIRST DRAINAGE AND UTILITY SHEET FOR NOTES



REVISIONS	
NAME	DATE

VILLAGE OF BUFFALO GROVE
DRAINAGE AND UTILITIES
DEERFIELD PARKWAY IMPROVEMENT
STA. 53+00 TO 57+00

DATE: 6/2/2005
DESIGNED BY: RTM
TECHNICIAN: JRR
CHECKED BY: MLH

20 0 20 HORIZ.
5 SCALE IN FEET 5 VERT.

BID SET