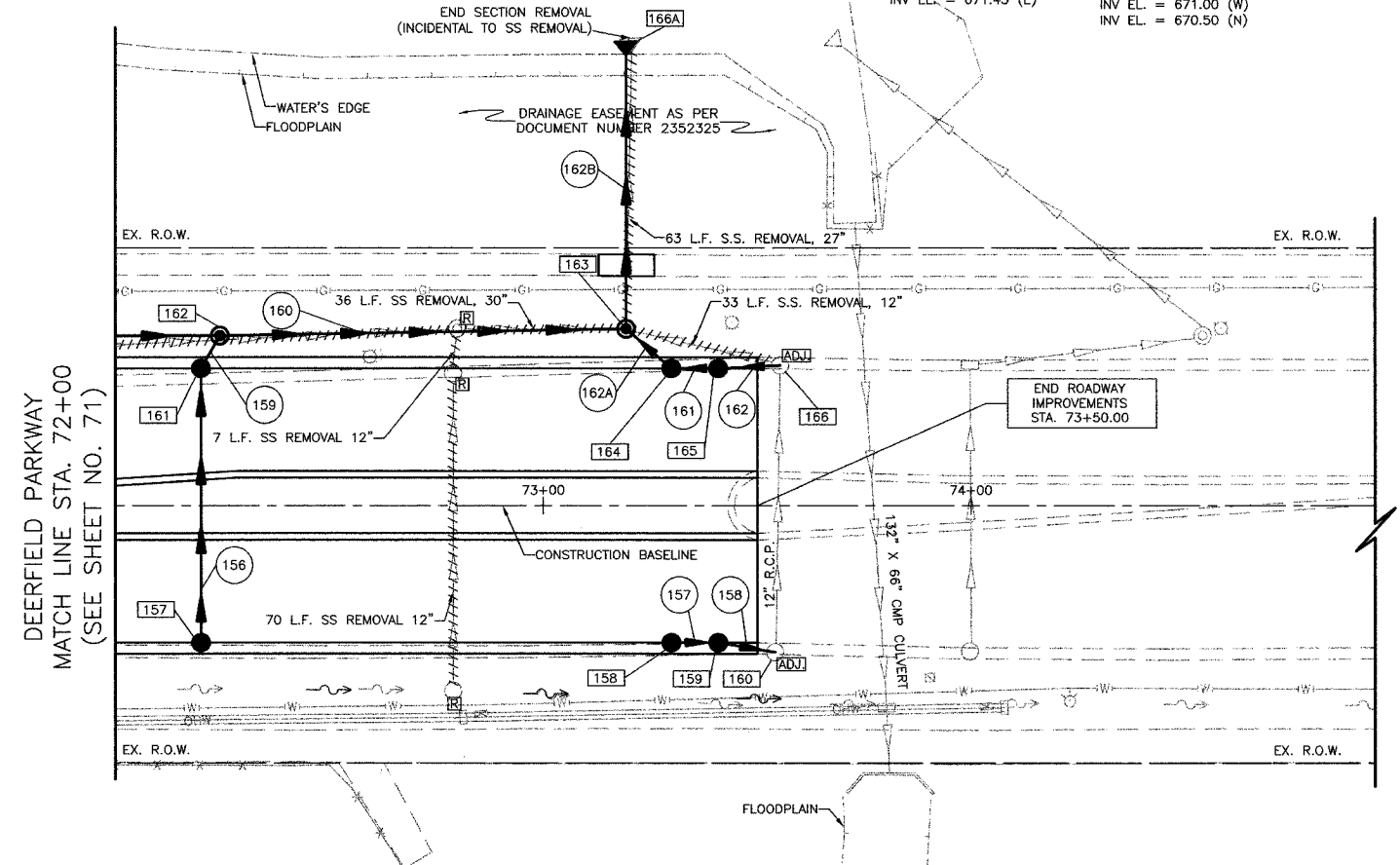


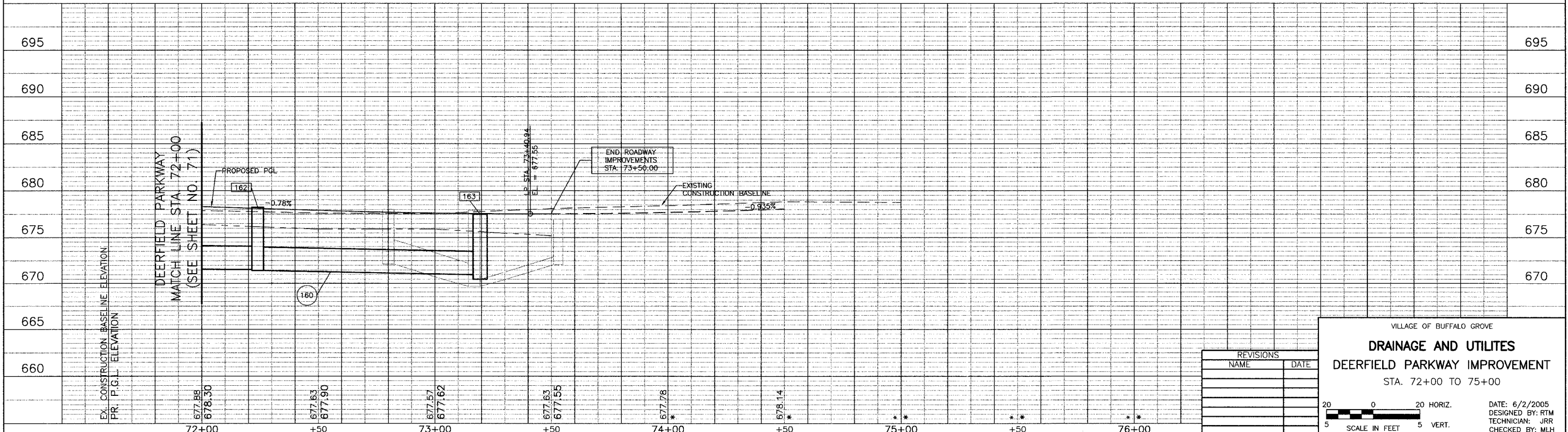
FILE#	SECTION	COUNTY	TOTAL SHEETS	SHEET NO
CH	A47	LAKE	176	72
STA. 72+00		TO STA. 75+00		
03-00088-00-PP		SURFACE TRANSPORTATION FUNDING		
CONTRACT NUMBER 83807				

- 157 STA. 72+20, 32' RT. CB TY C W/ T-24 F&G RIM EL. = 677.66 INV EL. = 674.15 (N)
- 158 STA. 73+30, 32' RT. CB TY C W/ T-24 F&G RIM EL. = 677.07 INV EL. = 674.04 (E)
- 159 STA. 73+40.94, 32' RT. RD CB TY A, 4" DIA. W/ T-24 F&G RIM EL. = 677.07 INV EL. = 674.00 (W) INV EL. = 674.00 (E)
- 160 STA. 73+54.30, 32.1' RT. CB TO BE ADJUSTED RIM EL. = 677.09 INV EL. = 672.49 (EX. N) INV EL. = 673.95 (W)
- 161 STA. 72+20, 32' LT. RD CB TY A, 4" DIA. W/ T-24 F&G RIM EL. = 677.66 INV EL. = 673.83 (S) INV EL. = 673.73 (NE)
- 162 STA. 72+24, 40' LT. RD MH TY A, 5" DIA. W/ T-1 F CL RIM EL. = 678.23 INV EL. = 671.55 (W) INV EL. = 673.72 (SW) INV EL. = 671.45 (E)
- 163 STA. 73+19.4, 41.2' LT. MH TY A, 6" DIA. W/ T-1 F CL RIM EL. = 677.50 INV EL. = 670.60 (SE) INV EL. = 671.00 (W) INV EL. = 670.50 (N)
- 164 STA. 73+30, 32' LT. CB TY A, 4" DIA. W/ T-24 F&G RIM EL. = 677.07 INV EL. = 671.70 (E) INV EL. = 670.70 (NW)
- 165 STA. 73+40.94, 32' LT. CB TY A, 4" DIA. W/ T-24 F&G RIM EL. = 677.07 INV EL. = 671.78 (W) INV EL. = 671.88 (E)
- 166 STA. 73+55.41, 31.9' LT. CB TO BE ADJUSTED RIM EL. = 676.99 INV EL. = 671.99 (EX. NW) INV EL. = 671.99 (EX. S) INV EL. = 671.99 (W)
- 166A STA. 73+19.4, 105' LT. PRECAST REINFORCED CONC. FLARED END SECTION, 30" W/ GRATING INV EL. = 670.35



- 156 64'-12" SS, CL. A, TY 1 @ 0.50% T.B.F. = 9 CU. YD.
- 157 8'-12" SS, CL. A, TY 1 @ 0.50% T.B.F. = 2 CU. YD.
- 158 10'-12" SS, CL. A, TY 1 @ 0.50% T.B.F. = 2 CU. YD.
- 159 2'-12" SS, CL. A, TY 2 @ 0.50% T.B.F. = 1 CU. YD.
- 160 90'-30" SS, CL. A, TY 2 @ 0.25%
- 161 8'-15" SS, CL. A, TY 2 @ 1.00% T.B.F. = 2 CU. YD.
- 162 11'-15" SS, CL. A, TY 2 @ 1.00% T.B.F. = 3 CU. YD.
- 162A 10'-18" SS, CL. A, TY 2 @ 1.00% T.B.F. = 4 CU. YD.
- 162B 62'-30" SS, CL. A, TY 2 @ 0.25% T.B.F. = 3 CU. YD.

GENERAL NOTE
PLACING STRUCTURES OR DEBRIS IN THE FLOODPLAIN / FLOODWAY IS PROHIBITED.



REVISIONS	
NAME	DATE

VILLAGE OF BUFFALO GROVE
DRAINAGE AND UTILITIES
DEERFIELD PARKWAY IMPROVEMENT
STA. 72+00 TO 75+00

DATE: 6/2/2005
DESIGNED BY: RTM
TECHNICIAN: JRR
CHECKED BY: MLH

20 0 20 HORIZ.
5 5 VERT.
SCALE IN FEET

BID SET