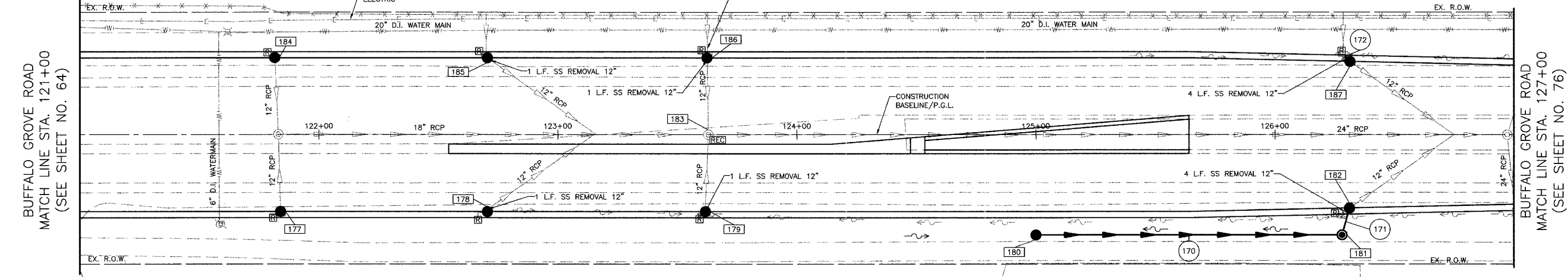


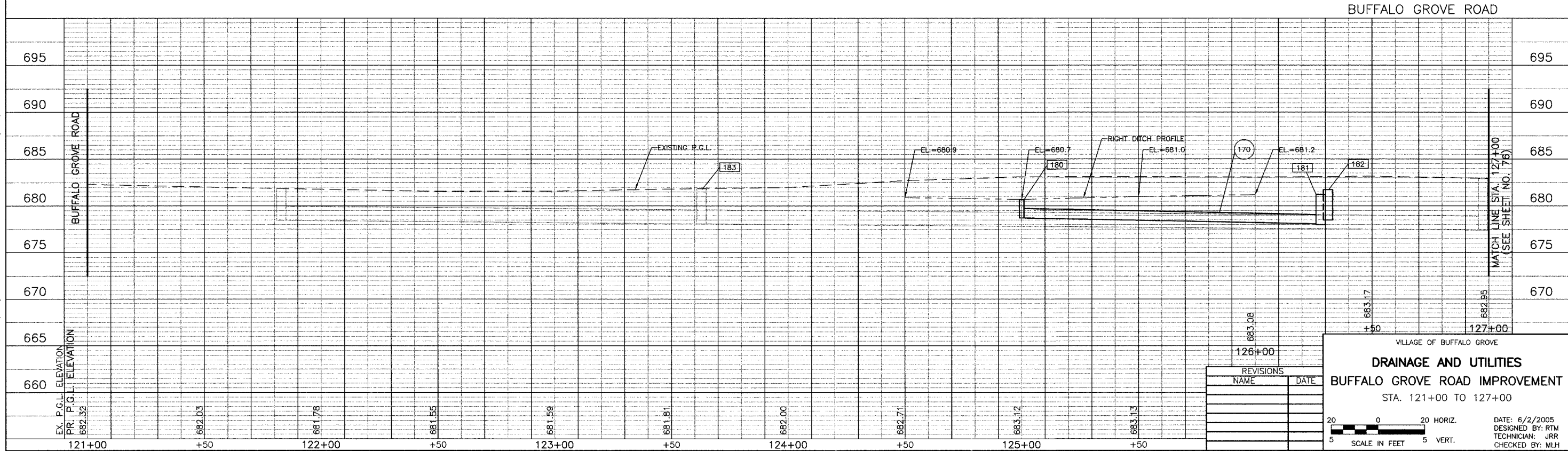
| W.P.#                 | SECTION | COUNTY                                  | TOTAL SHEETS | SHEET NO. |
|-----------------------|---------|---|--------------|-----------|
| CH                    | A47     | LAKE                                    | 176          | 75        |
| STA. 121+00           |         | TO STA. 127+00                          |              |           |
| 03-00088-00-FP        |         | ILLINOIS SURFACE TRANSPORTATION FUNDING |              |           |
| CONTRACT NUMBER 83807 |         |   |              |           |

- 177 STA. 121+83.94, 32' RT. CB TY C W/T-24 F&G RIM EL. = 681.24 INV EL. = 678.18 (EX. W)
- 178 STA. 122+70.48, 32' RT. CB TY C W/T-24 F&G RIM EL. = 680.96 INV EL. = 678.72 (EX. E)
- 179 STA. 123+61.71, 32' RT. CB TY C W/T-24 F&G RIM EL. = 681.11 INV EL. = 678.23 (EX. W)
- 180 STA. 125+00, 41.8' RT. CB TY C W/T-8 GRATE RIM EL. = 680.68 INV EL. = 678.71 (N)
- 181 STA. 126+28, 41.8' RT. RD MH TY A, 4' DIA. W/T-8 GRATE RIM EL. = 682.23 INV EL. = 678.08 (S) INV EL. = 677.98 (NW)
- 182 STA. 126+31.15, 30.62' RT. RD CB TY A, 4' DIA. W/T-24 F&G RIM EL. = 681.72 INV EL. = 677.95 E INV EL. = 677.95 EX. NW
- 183 STA. 123+62.95, 0.03' RT. MH TO BE RECONSTRUCTED RIM EL. = 681.79
- 184 STA. 121+81.49, 32' LT. CB TY C W/T-24 F&G RIM EL. = 681.22 INV EL. = 678.38 (EX. E)
- 185 STA. 122+70.48, 32' LT. CB TY C W/T-24 F&G RIM EL. = 680.99 INV EL. = 678.35 (EX. NE) INV EL. = 678.47 (EX. W)
- 186 STA. 123+62.39, 32' LT. CB TY C W/T-24 F&G RIM EL. = 681.14 INV EL. = 678.15 (EX. E) INV EL. = 678.15 (EX. W)



- 170 125'-12" SS, CL. A, TY 1 @ 0.50% T.B.F. = 17 CU. YD.
- 171 6'-12" SS, CL. A, TY 1 @ 0.50% T.B.F. = 1 CU. YD.
- 172 2'-6" PVC SS, CL. B, TY 1 @ 0.50% T.B.F. = 1 CU. YD.

\*SEE FIRST DRAINAGE AND UTILITY SHEET FOR NOTES



| REVISIONS |      |
|-----------|------|
| NAME      | DATE |
|           |      |
|           |      |
|           |      |
|           |      |

VILLAGE OF BUFFALO GROVE  
**DRAINAGE AND UTILITIES**  
**BUFFALO GROVE ROAD IMPROVEMENT**  
STA. 121+00 TO 127+00

DATE: 6/2/2005  
DESIGNED BY: RTM  
TECHNICIAN: JRR  
CHECKED BY: MLH

**BID SET**