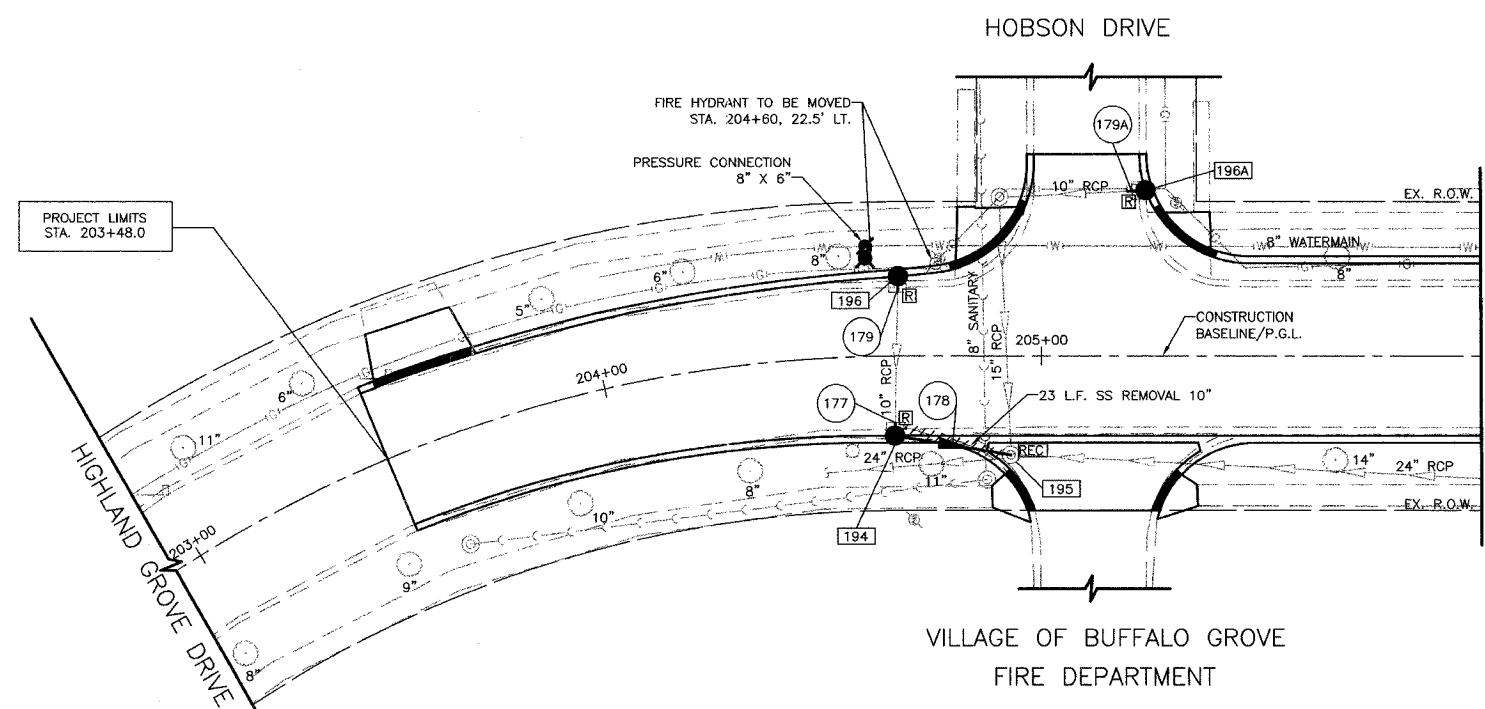


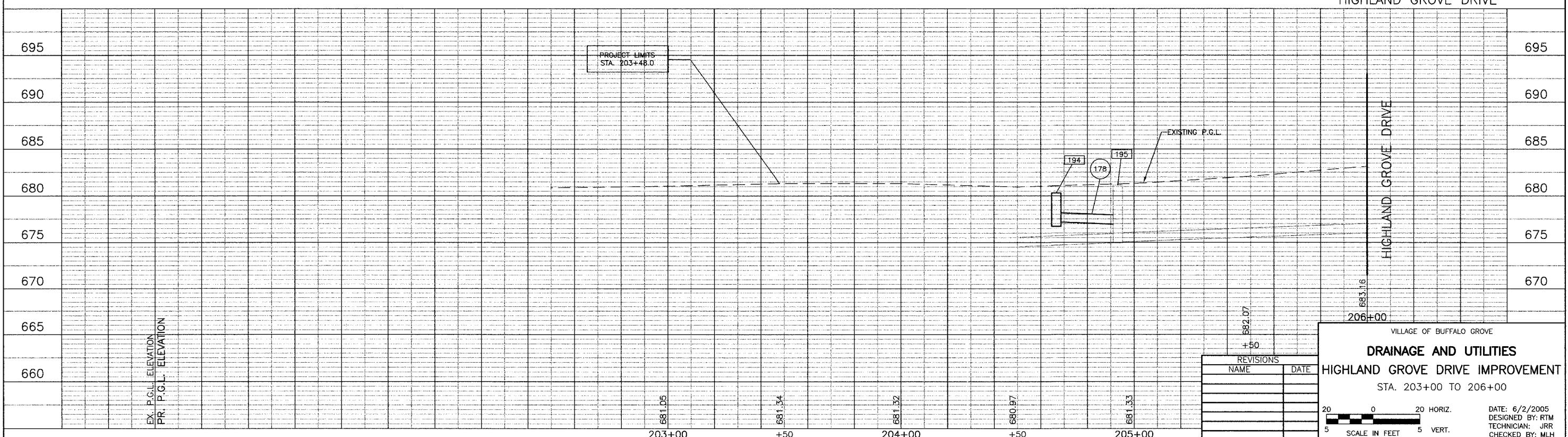
194	STA. 204+66.65, 18.0' RT. RD CB TY A, 4" DIA. W/ T-12 F&G RIM EL. = 680.73 INV EL. = 677.17 (W) INV EL. = 677.17 (NE)	195	STA. 204+93.05, 22.4' RT. MH TO BE RECONSTRUCTED RIM EL. = 681.15 PR. INV EL. = 676.95 (SW) INV EL. = 674.96 (EX. W) INV EL. = 674.96 (EX. S) INV EL. = 675.06 (EX. N)	196	STA. 204+67.31, 18.1' LT. CB TY C W/ T-12 F&G RIM EL. = 680.73 INV EL. = 677.67 (E)	196A	STA. 205+23.7, 38.1' LT. CB TY C W/ T-12 F&G RIM EL. = 680.68 INV EL. = 678.10 (S)
-----	--	-----	--	-----	---	------	--

ITEM	SECTION	COUNTY	TOTAL SHEETS	SHEET NO.
CH	A47	LAKE	176	77
STA. 203+00		TO STA. 206+00		
03-00088-00-FP		ILLINOIS	SURFACE TRANSPORTATION FUNDING	
CONTRACT NUMBER 83807				



- 177 3'-10" SS, CL. A, TY 1 @ 1.37%
T.B.F. = 1 CU. YD.
- 178 22'-12" SS, CL. A, TY 1 @ 1.00%
T.B.F. = 3 CU. YD.
- 179 4'-10" SS, CL. A, TY 1 @ 1.37%
T.B.F. = 1 CU. YD.
- 179A 4'-10" SS, CL. A, TY 1 @ 1.00%
T.B.F. = 1 CU. YD.

*SEE FIRST DRAINAGE AND UTILITY SHEET FOR NOTES



REVISIONS	
NAME	DATE

VILLAGE OF BUFFALO GROVE
DRAINAGE AND UTILITIES
HIGHLAND GROVE DRIVE IMPROVEMENT
STA. 203+00 TO 206+00

DATE: 6/2/2005
DESIGNED BY: RTM
TECHNICIAN: JRR
CHECKED BY: MLH

BID SET