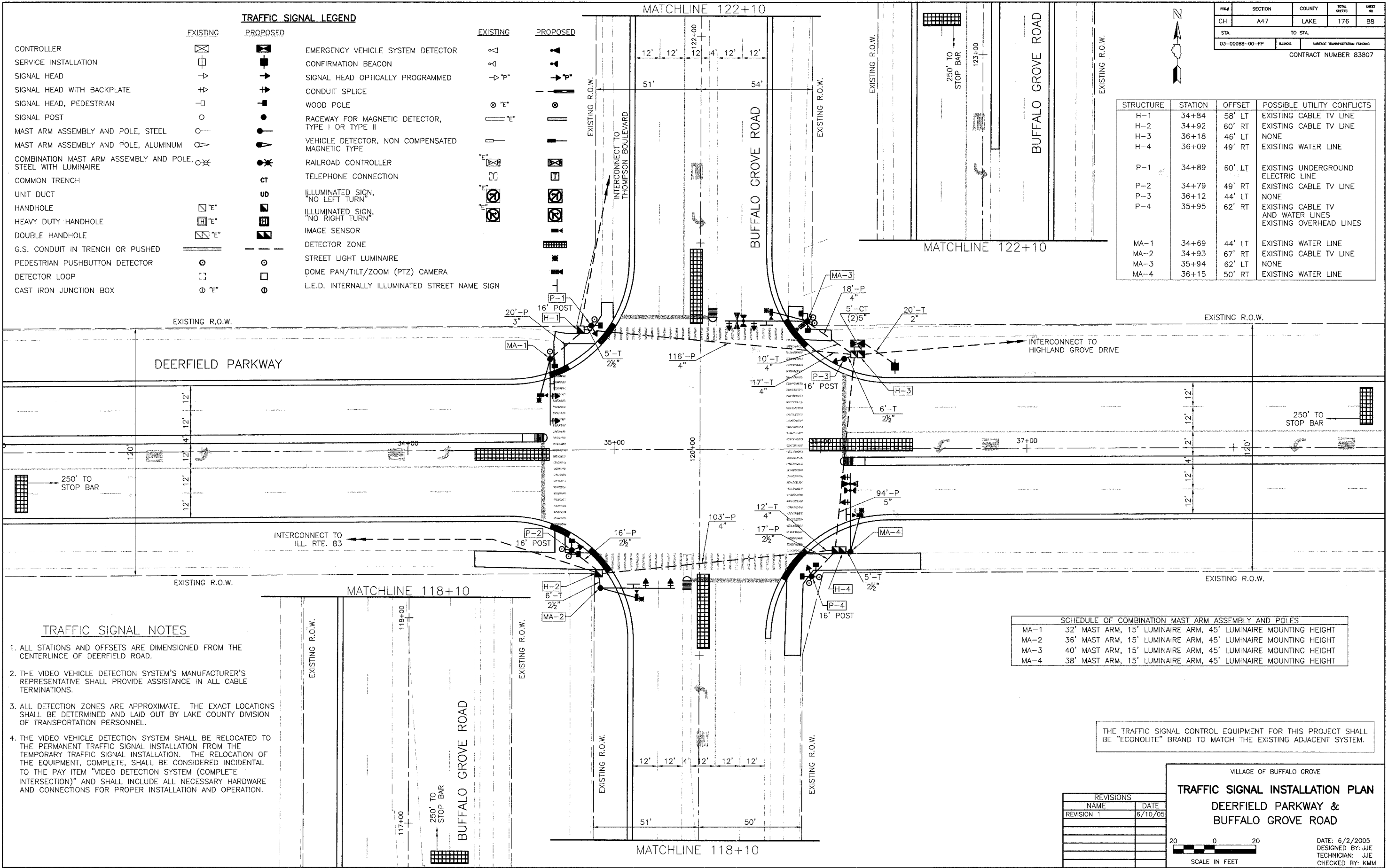


FILE#	SECTION	COUNTY	TOTAL SHEETS	SHEET NO.
CH	A47	LAKE	176	88
STA. TO STA.		BLANKS SURFACE TRANSPORTATION FUNDING		
03-00088-00-PP		CONTRACT NUMBER 83807		

TRAFFIC SIGNAL LEGEND

EXISTING	PROPOSED	EXISTING	PROPOSED
CONTROLLER	[Symbol]	EMERGENCY VEHICLE SYSTEM DETECTOR	[Symbol]
SERVICE INSTALLATION	[Symbol]	CONFIRMATION BEACON	[Symbol]
SIGNAL HEAD	[Symbol]	SIGNAL HEAD OPTICALLY PROGRAMMED	[Symbol]
SIGNAL HEAD WITH BACKPLATE	[Symbol]	CONDUIT SPLICE	[Symbol]
SIGNAL HEAD, PEDESTRIAN	[Symbol]	WOOD POLE	[Symbol]
SIGNAL POST	[Symbol]	RACEWAY FOR MAGNETIC DETECTOR, TYPE I OR TYPE II	[Symbol]
MAST ARM ASSEMBLY AND POLE, STEEL	[Symbol]	VEHICLE DETECTOR, NON COMPENSATED MAGNETIC TYPE	[Symbol]
MAST ARM ASSEMBLY AND POLE, ALUMINUM	[Symbol]	RAILROAD CONTROLLER	[Symbol]
COMBINATION MAST ARM ASSEMBLY AND POLE, STEEL WITH LUMINAIRE	[Symbol]	TELEPHONE CONNECTION	[Symbol]
COMMON TRENCH	[Symbol]	ILLUMINATED SIGN, "NO LEFT TURN"	[Symbol]
UNIT DUCT	[Symbol]	ILLUMINATED SIGN, "NO RIGHT TURN"	[Symbol]
HANDHOLE	[Symbol]	IMAGE SENSOR	[Symbol]
HEAVY DUTY HANDHOLE	[Symbol]	DETECTOR ZONE	[Symbol]
DOUBLE HANDHOLE	[Symbol]	STREET LIGHT LUMINAIRE	[Symbol]
G.S. CONDUIT IN TRENCH OR PUSHED	[Symbol]	DOME PAN/TILT/ZOOM (PTZ) CAMERA	[Symbol]
PEDESTRIAN PUSHBUTTON DETECTOR	[Symbol]	L.E.D. INTERNALLY ILLUMINATED STREET NAME SIGN	[Symbol]
DETECTOR LOOP	[Symbol]		
CAST IRON JUNCTION BOX	[Symbol]		

STRUCTURE	STATION	OFFSET	POSSIBLE UTILITY CONFLICTS
H-1	34+84	58' LT	EXISTING CABLE TV LINE
H-2	34+92	60' RT	EXISTING CABLE TV LINE
H-3	36+18	46' LT	NONE
H-4	36+09	49' RT	EXISTING WATER LINE
P-1	34+89	60' LT	EXISTING UNDERGROUND ELECTRIC LINE
P-2	34+79	49' RT	EXISTING CABLE TV LINE
P-3	36+12	44' LT	NONE
P-4	35+95	62' RT	EXISTING CABLE TV AND WATER LINES EXISTING OVERHEAD LINES
MA-1	34+69	44' LT	EXISTING WATER LINE
MA-2	34+93	67' RT	EXISTING CABLE TV LINE
MA-3	35+94	62' LT	NONE
MA-4	36+15	50' RT	EXISTING WATER LINE



TRAFFIC SIGNAL NOTES

1. ALL STATIONS AND OFFSETS ARE DIMENSIONED FROM THE CENTERLINE OF DEERFIELD ROAD.
2. THE VIDEO VEHICLE DETECTION SYSTEM'S MANUFACTURER'S REPRESENTATIVE SHALL PROVIDE ASSISTANCE IN ALL CABLE TERMINATIONS.
3. ALL DETECTION ZONES ARE APPROXIMATE. THE EXACT LOCATIONS SHALL BE DETERMINED AND LAID OUT BY LAKE COUNTY DIVISION OF TRANSPORTATION PERSONNEL.
4. THE VIDEO VEHICLE DETECTION SYSTEM SHALL BE RELOCATED TO THE PERMANENT TRAFFIC SIGNAL INSTALLATION FROM THE TEMPORARY TRAFFIC SIGNAL INSTALLATION. THE RELOCATION OF THE EQUIPMENT, COMPLETE, SHALL BE CONSIDERED INCIDENTAL TO THE PAY ITEM "VIDEO DETECTION SYSTEM (COMPLETE INTERSECTION)" AND SHALL INCLUDE ALL NECESSARY HARDWARE AND CONNECTIONS FOR PROPER INSTALLATION AND OPERATION.

SCHEDULE OF COMBINATION MAST ARM ASSEMBLY AND POLES	
MA-1	32' MAST ARM, 15' LUMINAIRE ARM, 45' LUMINAIRE MOUNTING HEIGHT
MA-2	36' MAST ARM, 15' LUMINAIRE ARM, 45' LUMINAIRE MOUNTING HEIGHT
MA-3	40' MAST ARM, 15' LUMINAIRE ARM, 45' LUMINAIRE MOUNTING HEIGHT
MA-4	38' MAST ARM, 15' LUMINAIRE ARM, 45' LUMINAIRE MOUNTING HEIGHT

THE TRAFFIC SIGNAL CONTROL EQUIPMENT FOR THIS PROJECT SHALL BE "ECONOLITE" BRAND TO MATCH THE EXISTING ADJACENT SYSTEM.

REVISIONS	
NAME	DATE
REVISION 1	6/10/05

VILLAGE OF BUFFALO GROVE

TRAFFIC SIGNAL INSTALLATION PLAN

DEERFIELD PARKWAY & BUFFALO GROVE ROAD

DATE: 6/2/2005
DESIGNED BY: JJE
TECHNICIAN: JJE
CHECKED BY: KJM

SCALE IN FEET