

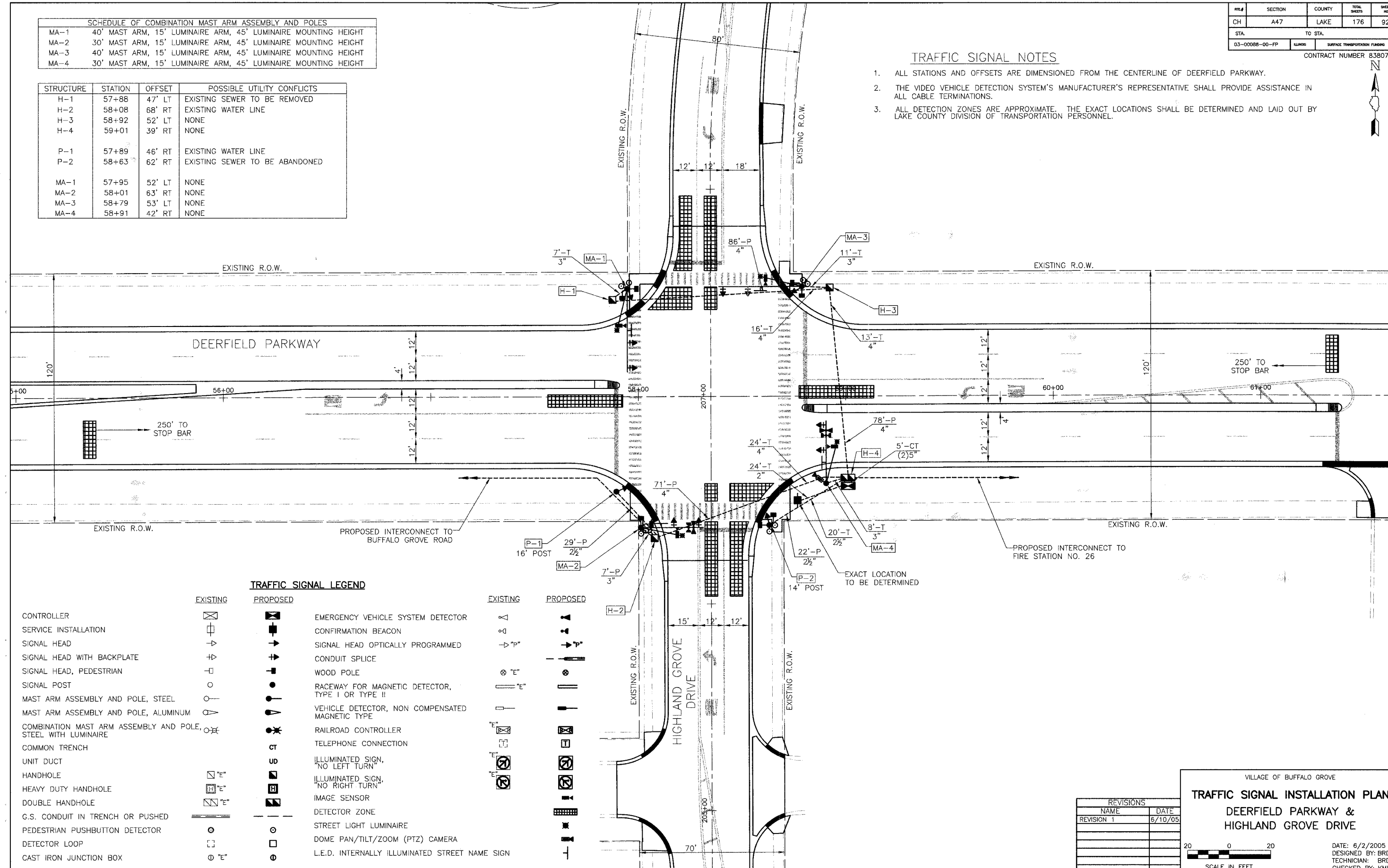
FILE#	SECTION	COUNTY	TOTAL SHEETS	SHEET NO
CH	A47	LAKE	176	92
STA.		TO STA.		
03-00088-00-PP		SURFACE TRANSPORTATION FUNDING		
CONTRACT NUMBER 83807				

SCHEDULE OF COMBINATION MAST ARM ASSEMBLY AND POLES			
MA-1	40' MAST ARM, 15' LUMINAIRE ARM, 45' LUMINAIRE MOUNTING HEIGHT		
MA-2	30' MAST ARM, 15' LUMINAIRE ARM, 45' LUMINAIRE MOUNTING HEIGHT		
MA-3	40' MAST ARM, 15' LUMINAIRE ARM, 45' LUMINAIRE MOUNTING HEIGHT		
MA-4	30' MAST ARM, 15' LUMINAIRE ARM, 45' LUMINAIRE MOUNTING HEIGHT		

STRUCTURE	STATION	OFFSET	POSSIBLE UTILITY CONFLICTS
H-1	57+88	47' LT	EXISTING SEWER TO BE REMOVED
H-2	58+08	68' RT	EXISTING WATER LINE
H-3	58+92	52' LT	NONE
H-4	59+01	39' RT	NONE
P-1	57+89	46' RT	EXISTING WATER LINE
P-2	58+63	62' RT	EXISTING SEWER TO BE ABANDONED
MA-1	57+95	52' LT	NONE
MA-2	58+01	63' RT	NONE
MA-3	58+79	53' LT	NONE
MA-4	58+91	42' RT	NONE

**TRAFFIC SIGNAL NOTES**

1. ALL STATIONS AND OFFSETS ARE DIMENSIONED FROM THE CENTERLINE OF DEERFIELD PARKWAY.
2. THE VIDEO VEHICLE DETECTION SYSTEM'S MANUFACTURER'S REPRESENTATIVE SHALL PROVIDE ASSISTANCE IN ALL CABLE TERMINATIONS.
3. ALL DETECTION ZONES ARE APPROXIMATE. THE EXACT LOCATIONS SHALL BE DETERMINED AND LAID OUT BY LAKE COUNTY DIVISION OF TRANSPORTATION PERSONNEL.

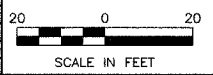


**TRAFFIC SIGNAL LEGEND**

	EXISTING	PROPOSED		EXISTING	PROPOSED
CONTROLLER			EMERGENCY VEHICLE SYSTEM DETECTOR		
SERVICE INSTALLATION			CONFIRMATION BEACON		
SIGNAL HEAD			SIGNAL HEAD OPTICALLY PROGRAMMED		
SIGNAL HEAD WITH BACKPLATE			CONDUIT SPLICE		
SIGNAL HEAD, PEDESTRIAN			WOOD POLE		
SIGNAL POST			RACEWAY FOR MAGNETIC DETECTOR, TYPE I OR TYPE II		
MAST ARM ASSEMBLY AND POLE, STEEL			VEHICLE DETECTOR, NON COMPENSATED MAGNETIC TYPE		
MAST ARM ASSEMBLY AND POLE, ALUMINUM			RAILROAD CONTROLLER		
COMBINATION MAST ARM ASSEMBLY AND POLE, STEEL WITH LUMINAIRE			TELEPHONE CONNECTION		
COMMON TRENCH			ILLUMINATED SIGN, NO LEFT TURN		
UNIT DUCT			ILLUMINATED SIGN, NO RIGHT TURN		
HANDHOLE			IMAGE SENSOR		
HEAVY DUTY HANDHOLE			DETECTOR ZONE		
DOUBLE HANDHOLE			STREET LIGHT LUMINAIRE		
G.S. CONDUIT IN TRENCH OR PUSHED			DOME PAN/TILT/ZOOM (PTZ) CAMERA		
PEDESTRIAN PUSHBUTTON DETECTOR			L.E.D. INTERNALLY ILLUMINATED STREET NAME SIGN		
DETECTOR LOOP					
CAST IRON JUNCTION BOX					

REVISIONS	
NAME	DATE
REVISION 1	6/10/05

VILLAGE OF BUFFALO GROVE  
**TRAFFIC SIGNAL INSTALLATION PLAN**  
 DEERFIELD PARKWAY &  
 HIGHLAND GROVE DRIVE



DATE: 6/2/2005  
 DESIGNED BY: BRD  
 TECHNICIAN: BRD  
 CHECKED BY: KMM

**BID SET**