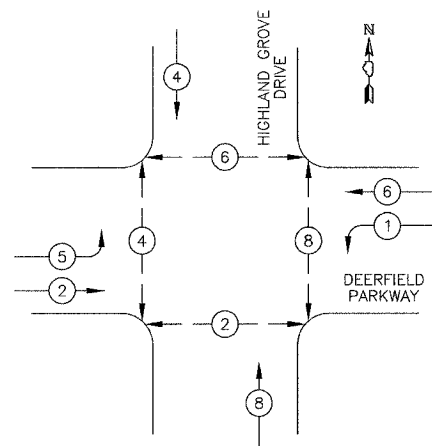


W/E #	SECTION	COUNTY	TOTAL SHEETS	SHEET NO.
CH	A47	LAKE	176	94
STA.		TO STA.		
03-00088-00-FP		ALIGN	SURFACE TRANSPORTATION FINING	
CONTRACT NUMBER 83807				

PROPOSED CONTROLLER SEQUENCE

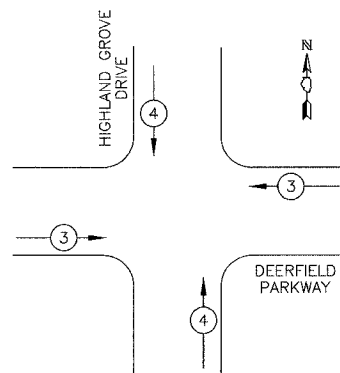


LEGEND

- ⊕ DUAL ENTRY PHASE
- ⊖ SINGLE ENTRY PHASE
- ⊕ OL OVERLAP
- ⊕ PEDESTRIAN MOVEMENT
- * NUMBER REFERS TO ASSOCIATED PHASE

PHASE DESIGNATION DIAGRAM

PROPOSED EMERGENCY VEHICLE PREEMPTION SEQUENCE



PROPOSED EMERGENCY VEHICLE PREEMPTORS

EMERGENCY VEHICLE PREEMPTOR	3	4
MOVEMENT	←	↑

NOTE: THE EMERGENCY VEHICLE PUSHBUTTON PREEMPTORS IN FIRE STATION NO. 28 ACTIVATE PREEMPTION PHASE 3 AT THE HIGHLAND GROVE INTERSECTION IN ADDITION TO THE DRIVEWAY SIGNALS AT THE FIRE STATION.

TRAFFIC SIGNAL SCHEDULE OF QUANTITIES

DESCRIPTION	UNIT	QNTY.
CONDUIT IN TRENCH, 2" DIA., GALVANIZED STEEL	FOOT	35
CONDUIT IN TRENCH, 2 1/2" DIA., GALVANIZED STEEL	FOOT	20
CONDUIT IN TRENCH, 3" DIA., GALVANIZED STEEL	FOOT	26
CONDUIT IN TRENCH, 4" DIA., GALVANIZED STEEL	FOOT	69
CONDUIT IN TRENCH, 5" DIA., GALVANIZED STEEL	FOOT	10
CONDUIT PUSHED, 2 1/2" DIA., GALVANIZED STEEL	FOOT	51
CONDUIT PUSHED, 3" DIA., GALVANIZED STEEL	FOOT	7
CONDUIT PUSHED, 4" DIA., GALVANIZED STEEL	FOOT	235
HANDHOLE	EACH	3
DOUBLE HANDHOLE	EACH	1
TRENCH AND BACKFILL FOR ELECTRICAL WORK	FOOT	147
ELECTRIC CABLE IN CONDUIT, 600V (XLP-TYPE USE) 1/C NO. 10	FOOT	1622
LUMINAIRE, SODIUM VAPOR, HORIZONTAL MOUNT, PHOTO-CELL CONTROL, 400 WATT	EACH	4
FULL-ACTUATED CONTROLLER AND TYPE IV CABINET, SPECIAL	EACH	1
TRANSCIEVER - FIBER OPTIC	EACH	1
ELECTRIC CABLE IN CONDUIT, SIGNAL, NO. 14 2C	FOOT	1450
ELECTRIC CABLE IN CONDUIT, SIGNAL, NO. 14 3C	FOOT	341
ELECTRIC CABLE IN CONDUIT, SIGNAL, NO. 14 5C	FOOT	1965
ELECTRIC CABLE IN CONDUIT, SIGNAL, NO. 14 7C	FOOT	1426
ELECTRIC CABLE IN CONDUIT, SERVICE NO. 6 2C	FOOT	71
TRAFFIC SIGNAL POST, GALVANIZED STEEL, 14 FT.	EACH	1
TRAFFIC SIGNAL POST, GALVANIZED STEEL, 16 FT.	EACH	1
STEEL COMBINATION MAST ARM ASSEMBLY AND POLE, 30 FT.	EACH	2
STEEL COMBINATION MAST ARM ASSEMBLY AND POLE, 40 FT.	EACH	2
CONCRETE FOUNDATION, TYPE A	FOOT	8
CONCRETE FOUNDATION, TYPE D	FOOT	8
CONCRETE FOUNDATION, TYPE E 30-INCH DIAMETER	FOOT	30
CONCRETE FOUNDATION, TYPE E 36-INCH DIAMETER	FOOT	30
TRAFFIC SIGNAL BACKPLATE, LOUVERED, ALUMINUM	EACH	8
LIGHT DETECTOR	EACH	2
LIGHT DETECTOR AMPLIFIER	EACH	1
PEDESTRIAN PUSH-BUTTON	EACH	8
COAXIAL CABLE IN CONDUIT	FOOT	76
SERVICE INSTALLATION, POLE MOUNTED	EACH	1
ELECTRIC CABLE IN CONDUIT, GROUNDING, NO. 6 1C	FOOT	537
ELECTRIC CABLE IN CONDUIT, NO. 20 3C, TWISTED, SHIELDED	FOOT	265
SIGNAL HEAD, L.E.D., 1-FACE, 3-SECTION, MAST ARM MOUNTED	EACH	6
SIGNAL HEAD, L.E.D., 1-FACE, 3-SECTION, BRACKET MOUNTED	EACH	2
SIGNAL HEAD, L.E.D., 1-FACE, 5-SECTION, BRACKET MOUNTED	EACH	2
SIGNAL HEAD, L.E.D., 1-FACE, 5-SECTION, MAST ARM MOUNTED	EACH	2
PEDESTRIAN SIGNAL HEAD, L.E.D., 2-FACE, BRACKET MOUNTED WITH COUNTDOWN TIMER	EACH	4
ELECTRIC CABLE IN CONDUIT, VIDEO, NO. 20 3C	FOOT	76
VIDEO DETECTION SYSTEM, COMPLETE INTERSECTION	L SUM	1
REMOTE-CONTROLLED VIDEO SYSTEM	L SUM	1
ELECTRIC CABLE IN CONDUIT, COMMUNICATION NO. 16 5 1/2 PAIR	FOOT	811
VIDEO TRANSMISSION SYSTEM (SPECIAL)	EACH	1
L.E.D. INTERNALLY ILLUMINATED STREET NAME SIGN	EACH	4

REVISIONS	
NAME	DATE

VILLAGE OF BUFFALO GROVE
SCHEDULE OF QUANTITIES AND PHASE DESIGNATION DIAGRAM
 DEERFIELD PARKWAY & HIGHLAND GROVE DRIVE

DATE: 6/2/2005
 DESIGNED BY: BRD
 TECHNICIAN: BRD
 CHECKED BY: KMM
 SCALE: NOT TO SCALE