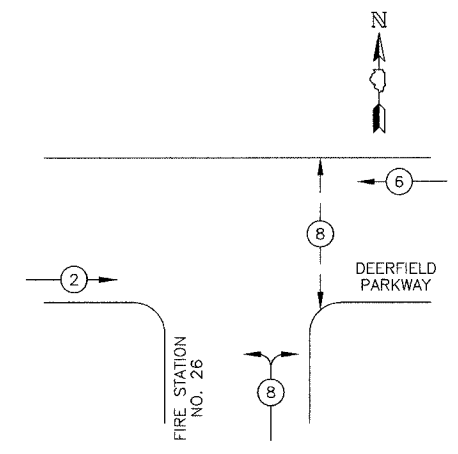


FILE #	SECTION	COUNTY	TOTAL SHEETS	SHEET NO.
CH	A47	LAKE	176	97
STA.		TO STA.		
03-00088-00-FP		ELMORE	SURFACE TRANSPORTATION FUNDING	
CONTRACT NUMBER 83807				

PROPOSED CONTROLLER SEQUENCE

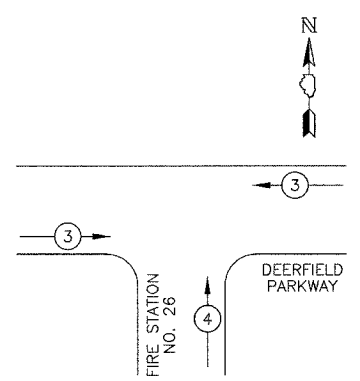


LEGEND

- ← * → DUAL ENTRY PHASE
- ← * → SINGLE ENTRY PHASE
- ← * OL → OVERLAP
- ← * → PEDESTRIAN MOVEMENT
- * NUMBER REFERS TO ASSOCIATED PHASE

PHASE DESIGNATION DIAGRAM

PROPOSED EMERGENCY VEHICLE PREEMPTION SEQUENCE



PROPOSED EMERGENCY VEHICLE PREEMPTORS		
EMERGENCY VEHICLE PREEMPTOR	3	4
MOVEMENT	← →	↑

NOTE: THE EMERGENCY VEHICLE PUSHBUTTON INSTALLATION IN THE FIRE STATION ACTIVATES PREEMPTION PHASE 3 AT THE HIGHLAND GROVE INTERSECTION IN ADDITION TO PHASE 4 FOR THE DRIVEWAY SIGNALS AT THE FIRE STATION.

TRAFFIC SIGNAL SCHEDULE OF QUANTITIES

DESCRIPTION	UNIT	QNTY.
PORTLAND CEMENT DRIVEWAY PAVEMENT, 8 INCH	SQ YD	3
DRIVEWAY PAVEMENT REMOVAL	SQ YD	3
CONDUIT IN TRENCH, 2" DIA., GALVANIZED STEEL	FOOT	62
CONDUIT IN TRENCH, 2 1/2" DIA., GALVANIZED STEEL	FOOT	142
CONDUIT IN TRENCH, 4" DIA., GALVANIZED STEEL	FOOT	10
CONDUIT PUSHED, 2" DIA., GALVANIZED STEEL	FOOT	88
CONDUIT PUSHED, 2 1/2" DIA., GALVANIZED STEEL	FOOT	9
CONDUIT PUSHED, 4" DIA., GALVANIZED STEEL	FOOT	164
HANDHOLE	EACH	2
DOUBLE HANDHOLE	EACH	1
TRENCH AND BACKFILL FOR ELECTRICAL WORK	FOOT	209
FULL-ACTUATED CONTROLLER AND TYPE IV CABINET, SPECIAL	EACH	1
TRANSCIVER - FIBER OPTIC	EACH	1
ELECTRIC CABLE IN CONDUIT, SIGNAL, NO. 14 2C	FOOT	332
ELECTRIC CABLE IN CONDUIT, SIGNAL, NO. 14 3C	FOOT	451
ELECTRIC CABLE IN CONDUIT, SIGNAL, NO. 14 5C	FOOT	1569
ELECTRIC CABLE IN CONDUIT, SERVICE NO. 6 2C	FOOT	34
TRAFFIC SIGNAL POST, GALVANIZED STEEL, 14 FT.	EACH	4
STEEL MAST ARM ASSEMBLY AND POLE, 30 FT.	EACH	2
CONCRETE FOUNDATION, TYPE A	FOOT	16
CONCRETE FOUNDATION, TYPE D	FOOT	4
CONCRETE FOUNDATION, TYPE E 30-INCH DIAMETER	FOOT	30
TRAFFIC SIGNAL BACKPLATE, LOUVERED, ALUMINUM	EACH	4
LIGHT DETECTOR	EACH	1
LIGHT DETECTOR AMPLIFIER	EACH	1
PEDESTRIAN PUSH-BUTTON	EACH	2
SERVICE INSTALLATION, POLE MOUNTED	EACH	1
ELECTRIC CABLE IN CONDUIT, GROUNDING, NO. 6 1C	FOOT	421
ELECTRIC CABLE IN CONDUIT, NO. 20 3C, TWISTED, SHIELDED	FOOT	81
SIGNAL HEAD, L.E.D., 1-FACE, 3-SECTION, MAST ARM MOUNTED	EACH	4
SIGNAL HEAD, L.E.D., 1-FACE, 3-SECTION, BRACKET MOUNTED	EACH	5
PEDESTRIAN SIGNAL HEAD, L.E.D., 1-FACE, BRACKET MOUNTED WITH COUNTDOWN TIMER	EACH	2
EMERGENCY VEHICLE PREEMPTION PUSHBUTTON ASSEMBLY	EACH	1

REVISIONS	
NAME	DATE

VILLAGE OF BUFFALO GROVE
**SCHEDULE OF QUANTITIES AND
 PHASE DESIGNATION DIAGRAM**
 DEERFIELD PARKWAY &
 FIRE STATION NO. 26

DATE: 6/2/2005
 DESIGNED BY: BRD
 TECHNICIAN: BRD
 CHECKED BY: KMM

SCALE: NOT TO SCALE