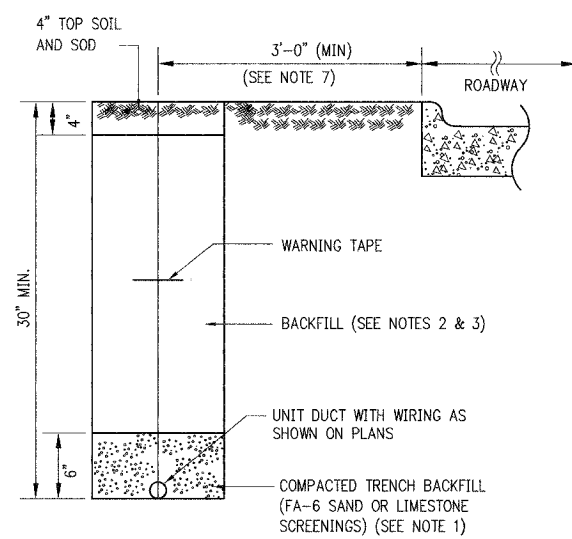
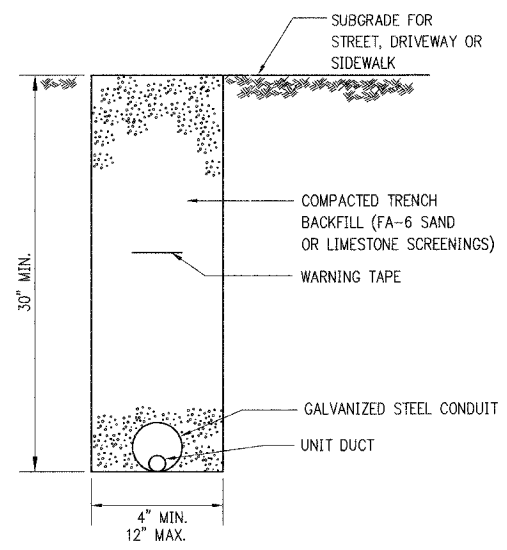


PTS.#	SECTION	COUNTY	TOTAL SHEETS	SHEET NO.
CH	A47	LAKE	176	129
STA.		TO STA.		
03-00088-00-PP		LIBOR	SURFACE TRANSPORTATION FUNDING	
CONTRACT NUMBER 83807				



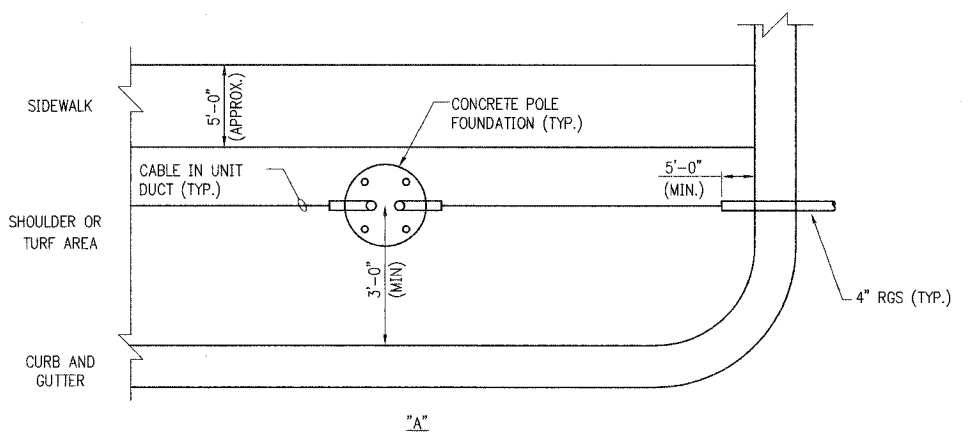
TYPICAL UNIT DUCT TRENCH DETAIL
(ALONG ROADWAY)

- NOTES:**
- UNIT DUCT INSTALLED IN TRENCHES SHALL BE COVERED WITH A MINIMUM OF 6" OF COMPACTED FA-6 OR LIMESTONE SCREENINGS.
 - IN GRASSY AREAS, THE BACKFILL MAY BE COMPACTED EARTH.
 - TRENCHES WITHIN 2' OF PROPOSED OR EXISTING STREETS, DRIVEWAYS, OR SIDEWALKS SHALL BE BACKFILLED WITH COMPACTED FA-6 SAND OR LIMESTONE SCREENINGS.
 - WHERE 2 OR MORE UNIT DUCTS RUN ADJACENT TO EACH OTHER, THEY SHALL BE PLACED IN A COMMON TRENCH SO AS NOT TO CROSS EACH OTHER.
 - 6" WIDE REINFORCED METALLIC WARNING TAPE, RED WITH BLACK LETTERING TO READ "CAUTION-ELECTRICAL LINE BURIED BELOW". WARNING TAPE TO BE PLACED 1' MINIMUM TO 2' MAXIMUM BELOW FINISHED GRADE.
 - ALL GRASSY AREAS DISTURBED DURING CONSTRUCTION SHALL BE RESTORED WITH 4" OF TOPSOIL AND SOD.
 - EXACT DISTANCE SHALL BE FIELD COORDINATED.

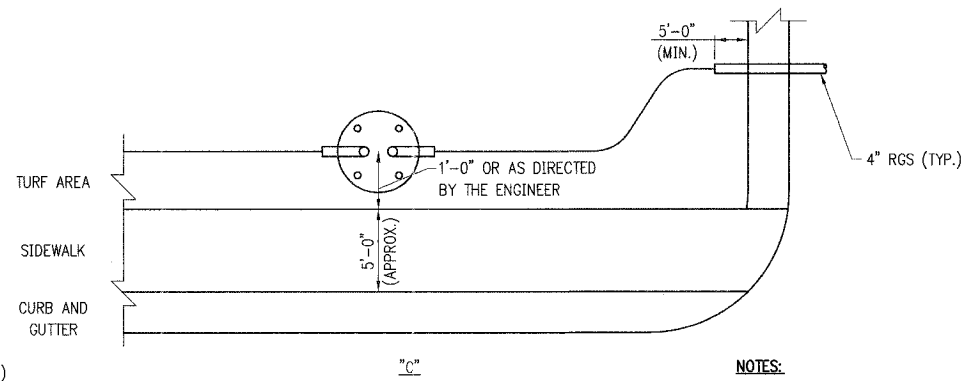


TYPICAL CONDUIT TRENCH DETAIL
(UNDER PAVEMENT)

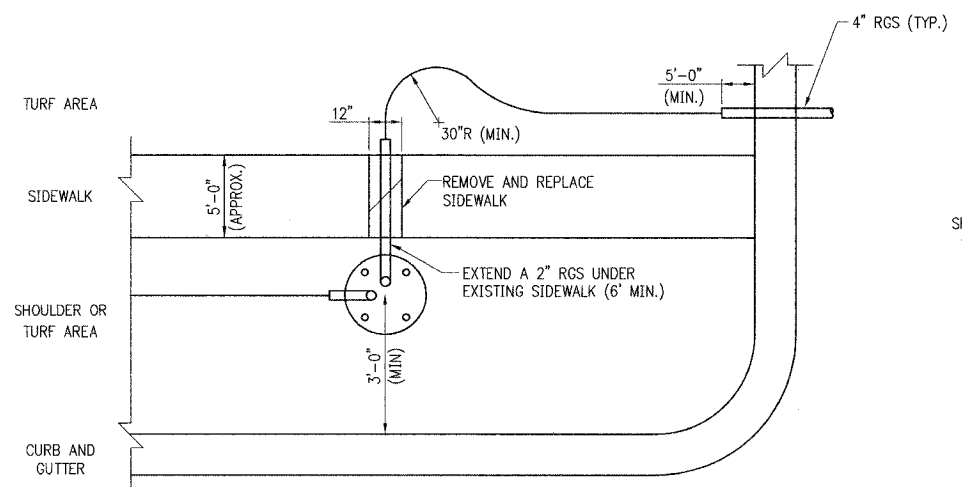
- NOTES:**
- CONDUIT SHALL BE HOT DIP GALVANIZED STEEL, A MINIMUM OF 4" IN DIAMETER.
 - CONDUIT SHALL EXTEND A MINIMUM OF 5' BEYOND THE STREET, DRIVEWAY, OR SIDEWALK.
 - CONDUIT SHALL HAVE BOTH ENDS CAPPED UNTIL USED.
 - WHEN PLACED INTO SERVICE, CONDUIT SHALL BE PROVIDED WITH AN INSULATED FIBER BUSHING, AND SEALED WITH A WORKABLE SOFT PLASTIC SEALING COMPOUND AT EACH END.
 - 6" WIDE REINFORCED METALLIC WARNING TAPE, RED WITH BLACK LETTERING TO READ "CAUTION-ELECTRICAL LINE BURIED BELOW". WARNING TAPE TO BE PLACED 1' MINIMUM TO 2' MAXIMUM BELOW FINISHED GRADE.
 - ALL GRASSY AREAS DISTURBED DURING CONSTRUCTION SHALL BE RESTORED WITH 4" OF TOPSOIL AND SOD.



"A"

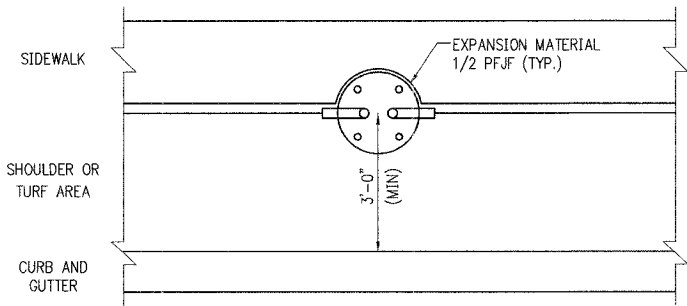


"C"



"B"

TYPICAL CONDUIT INSTALLATION DETAILS
(NEAR INTERSECTIONS)



"D"

- NOTES:**
- UNIT DUCT SHALL BE INSTALLED MIN. 2'-0" FROM PAVEMENT EDGE.
 - CONTRACTOR SHALL MAKE AN EFFORT TO INSTALL RGS CONDUITS (UNDER DRIVEWAYS OR ROADWAY) AT THE SAME SIDE OF THE SIDEWALK AS THE POLE FOUNDATION (DETAIL "A").
 - WHEN ITS NECESSARY TO CROSS THE EXISTING SIDEWALK, CONTRACTOR SHALL INSTALL A 4" RGS CONDUIT PERPENDICULAR TO THE SIDEWALK (DETAIL "B").
 - WHEN LOCATION OF A POLE FOUNDATION FALLS COMPLETELY WITHIN THE EXISTING SIDEWALK, CONTRACTOR SHALL CONSTRUCT THE FOUNDATION AT THE SIDE OF SIDEWALK AWAY FROM THE ROAD (DETAIL "C"). WHEN PARTIAL OVERLAP OCCURS, CONTRACTOR SHALL CONSTRUCT THE POLE FOUNDATION AS SHOWN ON DETAIL "D".
 - LOCATIONS SHOWN IN DETAILS ARE APPROXIMATE AND SHALL BE FIELD COORDINATED DURING CONSTRUCTION.



REVISIONS	
NAME	DATE

VILLAGE OF BUFFALO GROVE
LIGHTING PLANS
ELECTRICAL DETAILS
(1 OF 4)

DATE: 6/2/2005
DESIGNED BY: CMW
TECHNICIAN: JRH
CHECKED BY: MAR