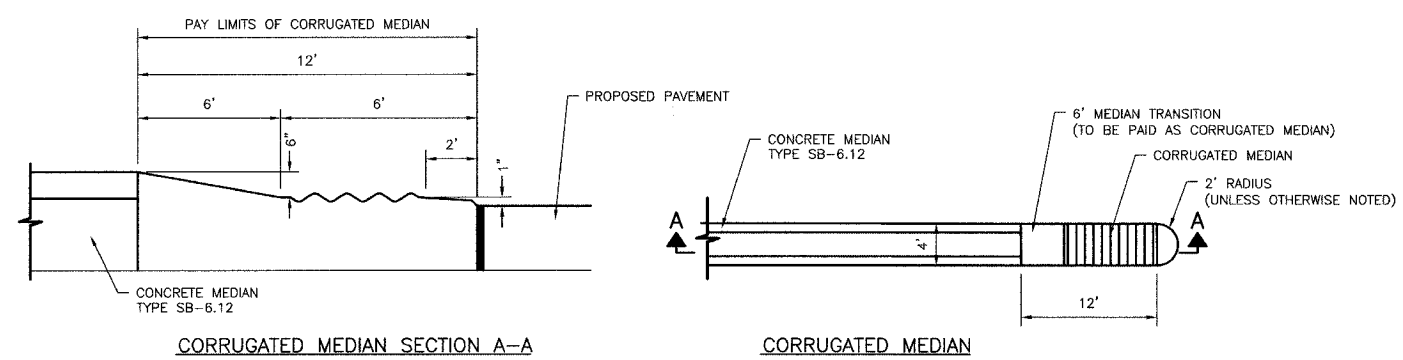
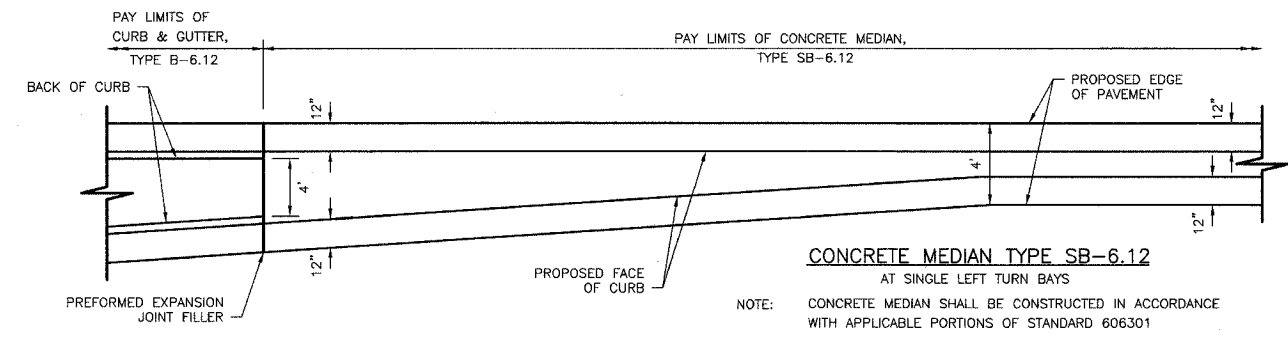


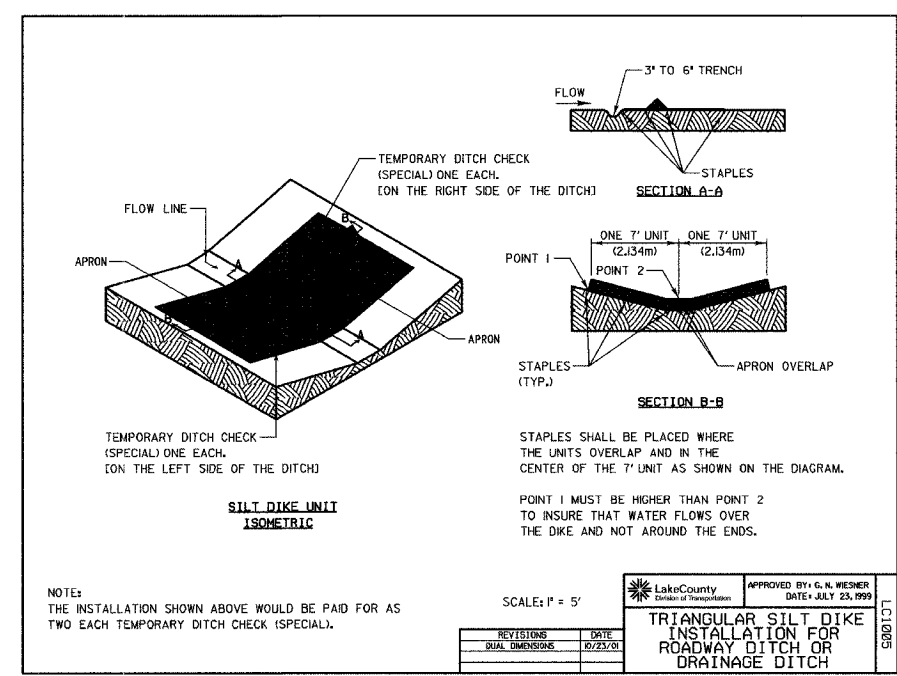
FILE #	SECTION	COUNTY	TOTAL SHEETS	SHEET NO.
CH	A47	LAKE	176	161
STA.		TO STA.		
03-00088-00-FP		ELIMOS	SURFACE TRANSPORTATION FUNDING	
CONTRACT NUMBER 83807				



NOTE: CORRUGATED MEDIAN SHALL BE CONSTRUCTED IN ACCORDANCE WITH APPLICABLE PORTIONS OF STANDARD 606306



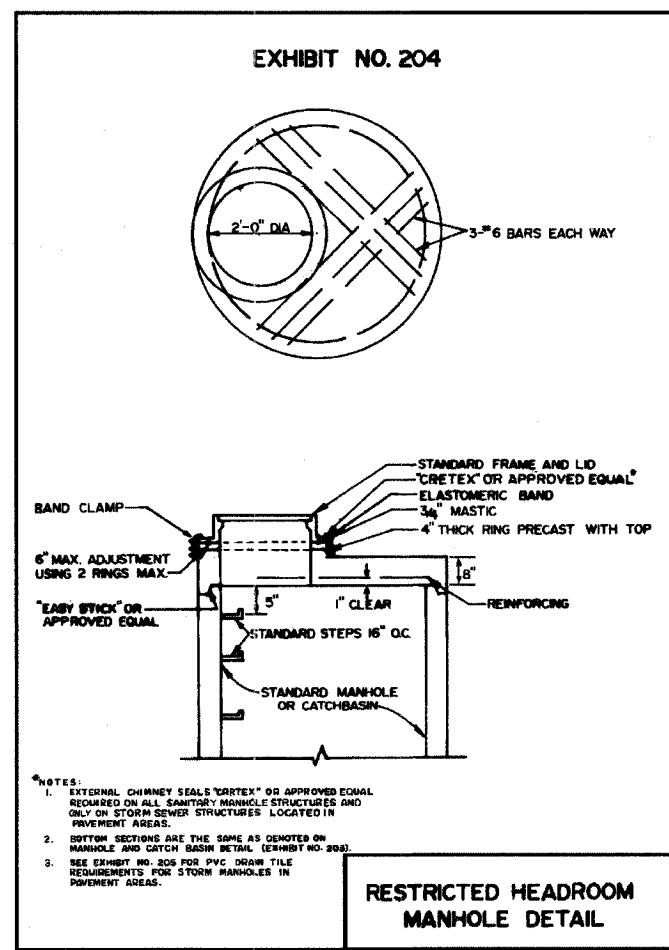
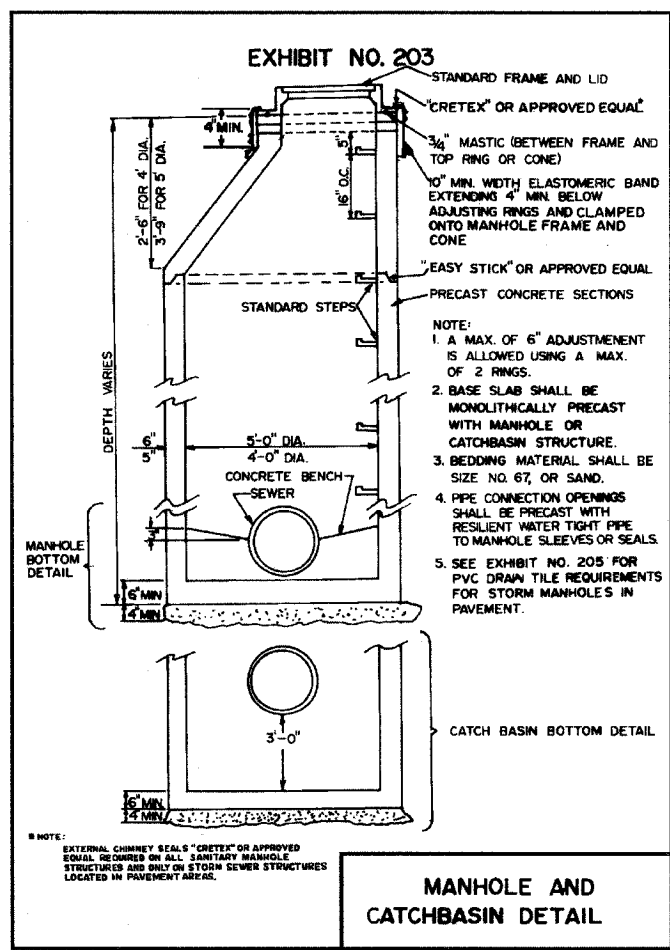
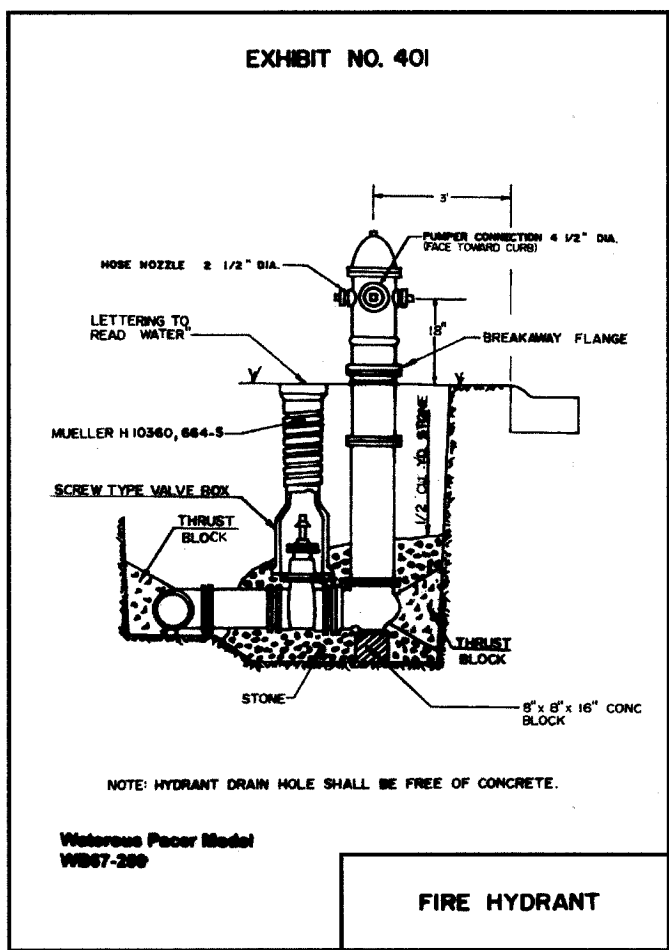
NOTE: CONCRETE MEDIAN SHALL BE CONSTRUCTED IN ACCORDANCE WITH APPLICABLE PORTIONS OF STANDARD 606301



NOTE: THE INSTALLATION SHOWN ABOVE WOULD BE PAID FOR AS TWO EACH TEMPORARY DITCH CHECK (SPECIAL).

REVISIONS	DATE

SCALE: 1" = 5'  
 Lake County  
 APPROVED BY: G. N. WESNER  
 DATE: JULY 23, 1999  
**TRIANGULAR SILT DIKE  
 INSTALLATION FOR  
 ROADWAY DITCH OR  
 DRAINAGE DITCH**



REVISIONS	
NAME	DATE

VILLAGE OF BUFFALO GROVE  
**DETAILS**  
 DEERFIELD PARKWAY IMPROVEMENT  
 NOT TO SCALE  
 DATE: 6/2/2005  
 DESIGNED BY: RTM  
 TECHNICIAN: JRR  
 CHECKED BY: RTM