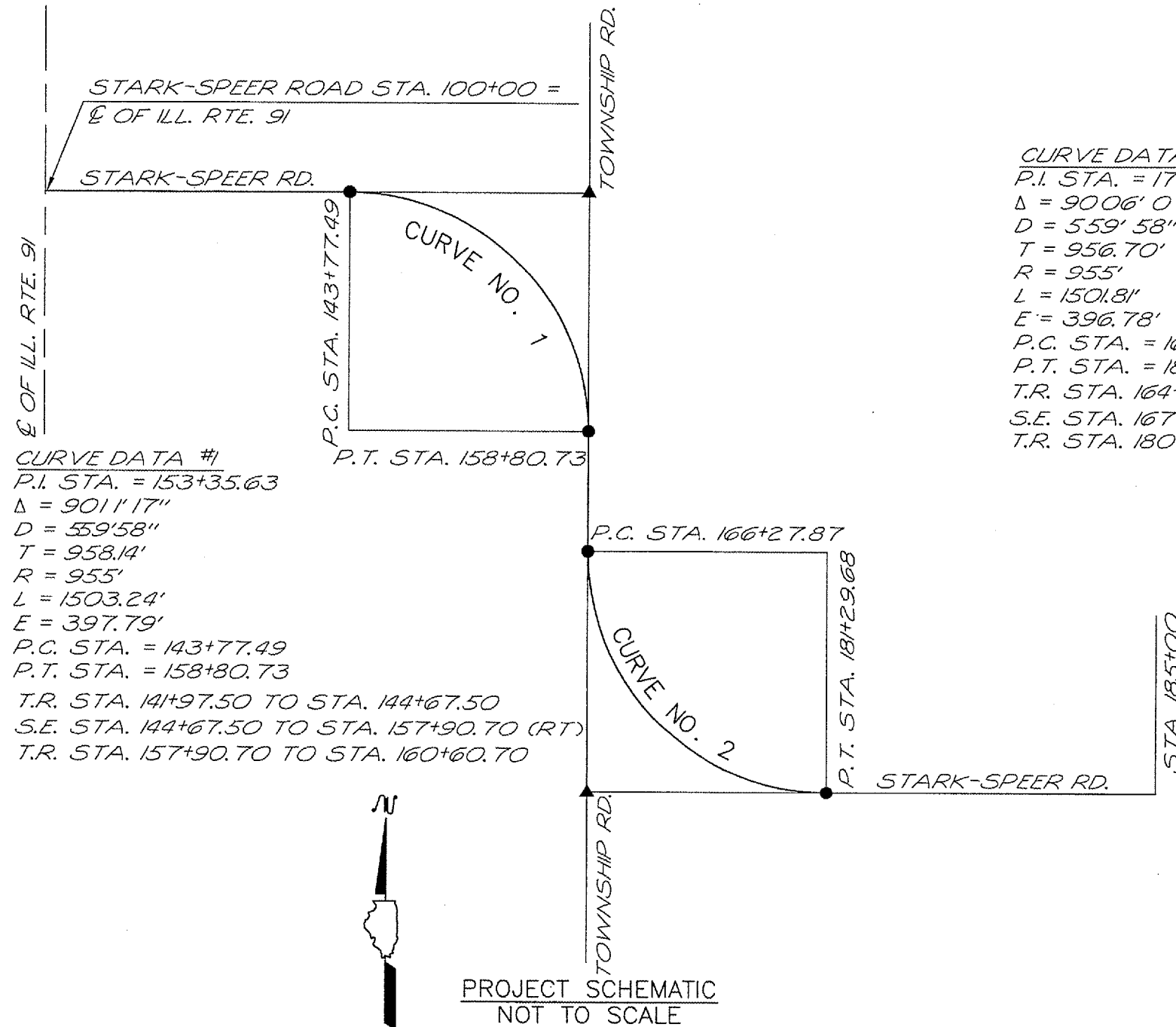


RTE.	SECTION	COUNTY	TOTAL SHEETS	SHEET NO.
FAS 373 CH. #3	*	STARK CO.	4	4
F.H.W.A. REG.		ILLINOIS	PROJECT **	

*01-00149-00-RS
**RS-373 (108)



CURVE DATA #2
 P.I. STA. = 175+84.57
 $\Delta = 90^{\circ}06'07.5''$
 $D = 559'58''$
 $T = 956.70'$
 $R = 955'$
 $L = 1501.81'$
 $E = 396.78'$
 P.C. STA. = 166+27.87
 P.T. STA. = 181+29.68
 T.R. STA. 164+48 TO STA. 167+18
 S.E. STA. 167+18 TO STA. 180+40 (LT)
 T.R. STA. 180+40 TO STA. 183+10

CURVE DATA #1
 P.I. STA. = 153+35.63
 $\Delta = 90^{\circ}11'17''$
 $D = 559'58''$
 $T = 958.14'$
 $R = 955'$
 $L = 1503.24'$
 $E = 397.79'$
 P.C. STA. = 143+77.49
 P.T. STA. = 158+80.73
 T.R. STA. 141+97.50 TO STA. 144+67.50
 S.E. STA. 144+67.50 TO STA. 157+90.70 (RT)
 T.R. STA. 157+90.70 TO STA. 160+60.70

CURVE DATA AND SUPER ELEVATION RATES

CURVE NO.	SE RATE FT/FT	SUPER ATTAIN.	FULL SUPER	SUPER REMOVED	TRANS. LENGTH
1	0.08	141+97.50	144+67.50	157+90.70	270'
		144+67.50	157+90.70	160+60.70	
2	0.08	164+48	167+18	180+40	270'
		167+18	180+40	183+10	

PROJECT SCHEMATIC
NOT TO SCALE

T.R. = TRANSITION
 S.E. = SUPER ELEVATED
 N.C. = NORMAL CROWN

PROJECT SCHEMATIC,
CURVE DATA AND S.E. RATES