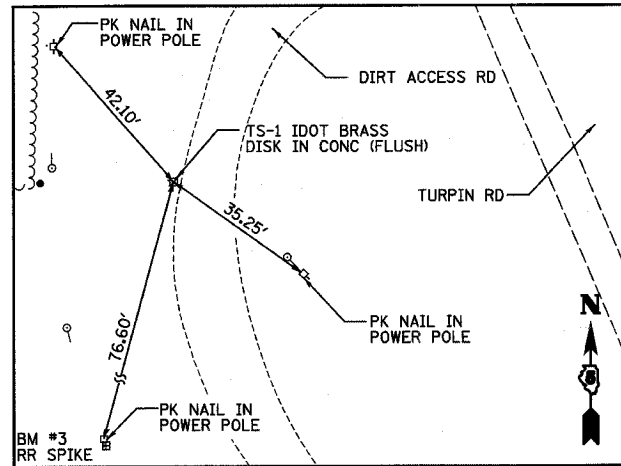
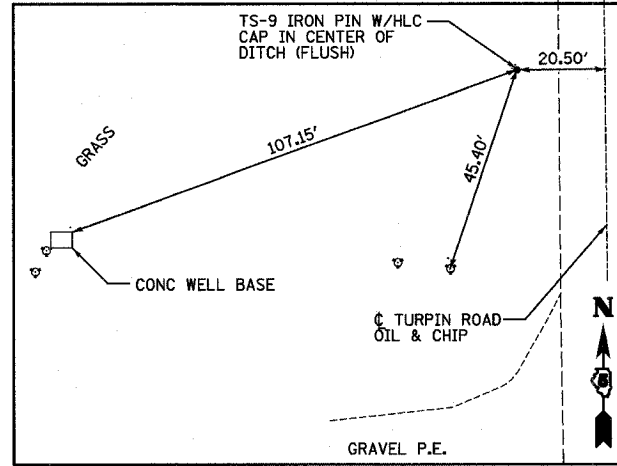


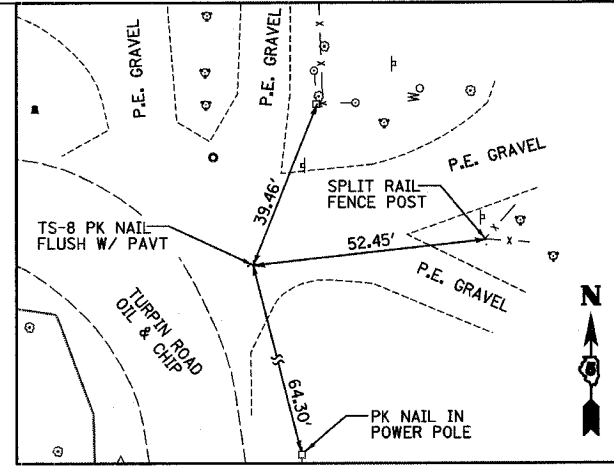
ROUTE NO.	SECTION	COUNTY	TOTAL SHEETS	SHEET NO.
CH 31	*	MACON	162	13
FED. ROAD DIST. NO.		ILLINOIS	PROJECT	
* 02-00175-00-PV				



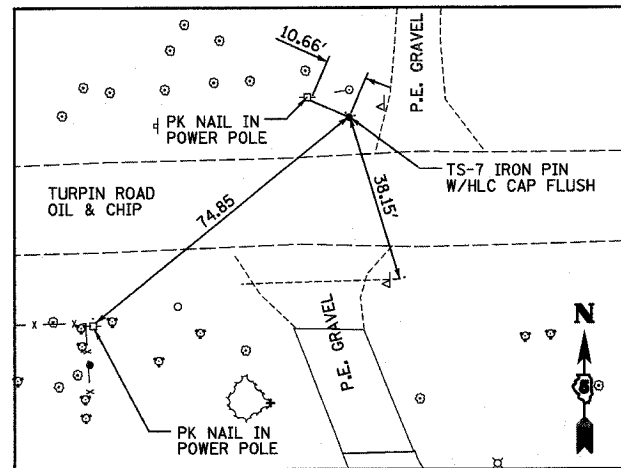
TS - 1  
 STA 502+01.76  
 O/S 97.71 LT  
 E 19402.11  
 N 138242.98



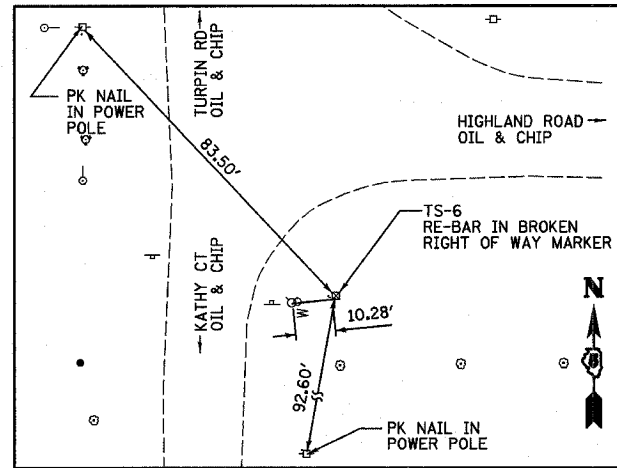
TS - 9  
 STA 524+95.09  
 O/S 22.79 LT  
 E 19351.01  
 N 140559.31



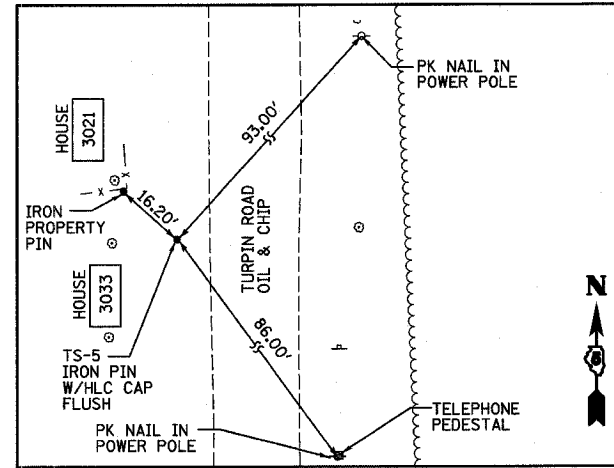
TS - 8  
 STA 537+38.15  
 O/S 52.01 RT  
 E 19373.73  
 N 141828.60



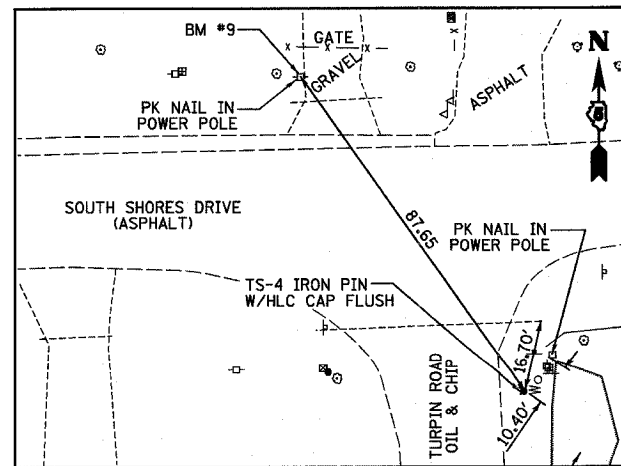
TS - 7  
 STA 544+79.43  
 O/S 19.91 RT  
 E 18606.42  
 N 141848.49



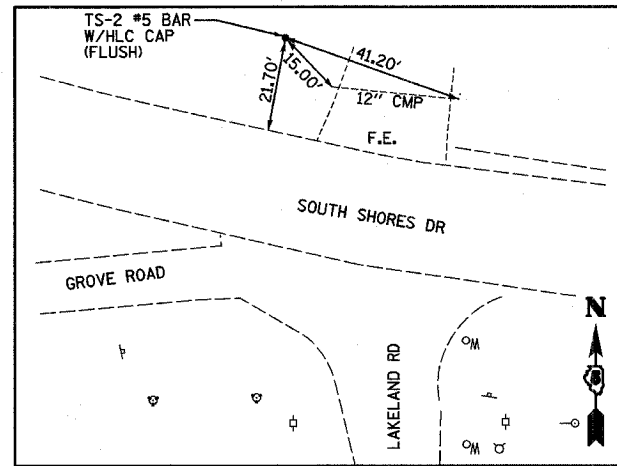
TS - 6  
 STA 549+91.35  
 O/S 65.63 LT  
 E 18064.78  
 N 141779.74



TS - 5  
 STA 558+16.12  
 O/S 18.13 LT  
 E 18010.94  
 N 142638.09

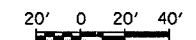


TS - 4  
 STA 564+98.59  
 O/S 70.62 RT  
 E 18037.28  
 N 143354.36



TS - 2  
 STA 569+93.31  
 O/S 33.48 RT  
 E 17520.24  
 N 143444.64

BM#	STA	O/S	ELEV	DESCRIPTION
3	501+41.48	144.34 LT	670.72	RR SPIKE IN POWER POLE W OF HARRYLAND AND TURPIN INTERSECTION
4	508+96.98	29.19 LT	666.07	RR SPIKE IN POWER POLE W SIDE OF TURPIN RD
5	529+21.91	21.74 RT	670.04	RR SPIKE IN POWER POLE EAST OF TURPIN RD NW CORNER OF PROPERTY
6	539+55.62	37.50 RT	654.71	"M" IN MUELLER ON FIRE HYDRANT NE CORNER OF TEMPE DR AND HIGHLAND RD.
7	549+96.34	72.24 LT	676.16	"M" IN MUELLER ON FIRE HYDRANT SE CORNER OF KATHY CT AND HIGHLAND RD
8	559+03.07	26.01 RT	679.07	"M" IN MUELLER ON FIRE HYDRANT SE CORNER OF LILAC DR AND TURPIN RD
9	565+60.91	87.95 RT	675.61	RR SPIKE IN POWER POLE NW CORNER OF SOUTH SHORES AND TURPIN RD.



TIES AND BENCHMARKS

REVISIONS NO. DATE INITIALS		TURPIN ROAD CONNECTOR (CH 31) MACON COUNTY, ILLINOIS		DRAWN BY DATE EMR 8/03
		HOMER L. CHASTAIN & ASSOCIATES, LLP CONSULTING ENGINEERS 184-00197		CHECKED BY DATE GLF 03/05
		DECATUR (317) 422-8544 CHICAGO (773) 714-0050		BOOK NUMBER 471
				PROJECT No. 4805
				SHEET No.