

ROUTE NO.	SECTION	COUNTY	TOTAL SHEETS	SHEET NO.
CH 31	*	MACON	162	25
STA.	TO STA.			
FED. RD. DIST. NO. 7	ILLINOIS	PROJECT		

\* 02-00175-00-PV

DATE	BY

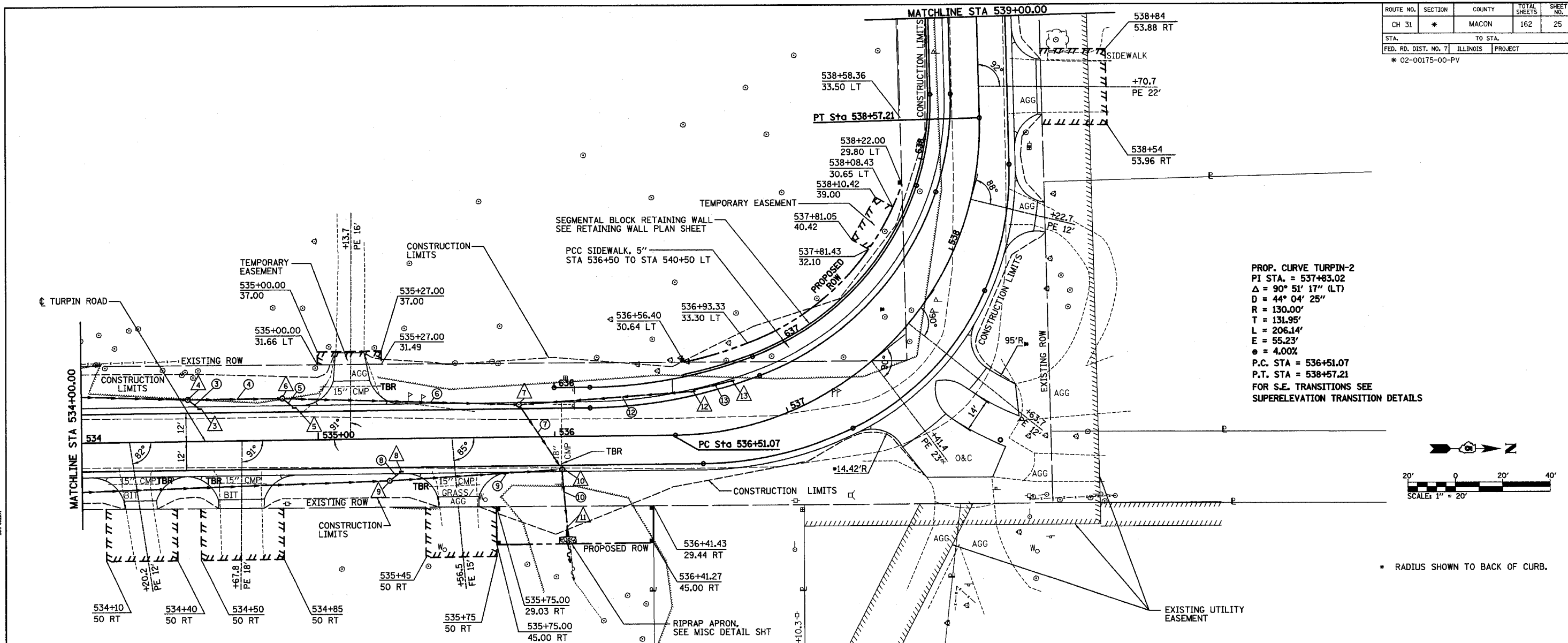
PLAN  
SURVEYED  
NOTED  
NO. 10

DECATUR 017 425-8644  
CHICAGO 0773 714-0060

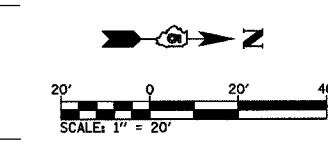
ROMER L. CHASTAIN & ASSOCIATES, LLP  
CONSULTING ENGINEERS  
14-00097

DATE	BY

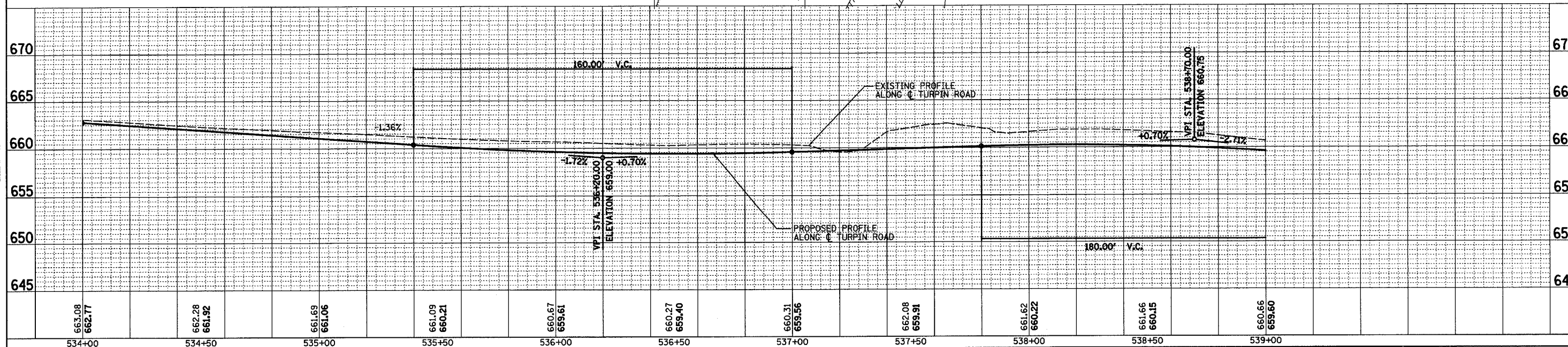
PROFILE  
SURVEYED  
NOTED  
NO. 10



PROP. CURVE TURPIN-2  
 PI STA. = 537+83.02  
 $\Delta = 90^\circ 51' 17''$  (LT)  
 $D = 44^\circ 04' 25''$   
 $R = 130.00'$   
 $T = 131.95'$   
 $L = 206.14'$   
 $E = 55.23'$   
 $\theta = 4.00\%$   
 P.C. STA = 536+51.07  
 P.T. STA = 538+57.21  
 FOR S.E. TRANSITIONS SEE SUPERELEVATION TRANSITION DETAILS



• RADIUS SHOWN TO BACK OF CURB.



STA 534+00 TO STA 539+00