

ROUTE NO.	SECTION	COUNTY	TOTAL SHEETS	SHEET NO.
CH 31	*	MACON	162	31
STA.		TO STA.		
FED. RD. DIST. NO. 7		ILLINOIS		PROJECT
* 02-00175-00-PV				

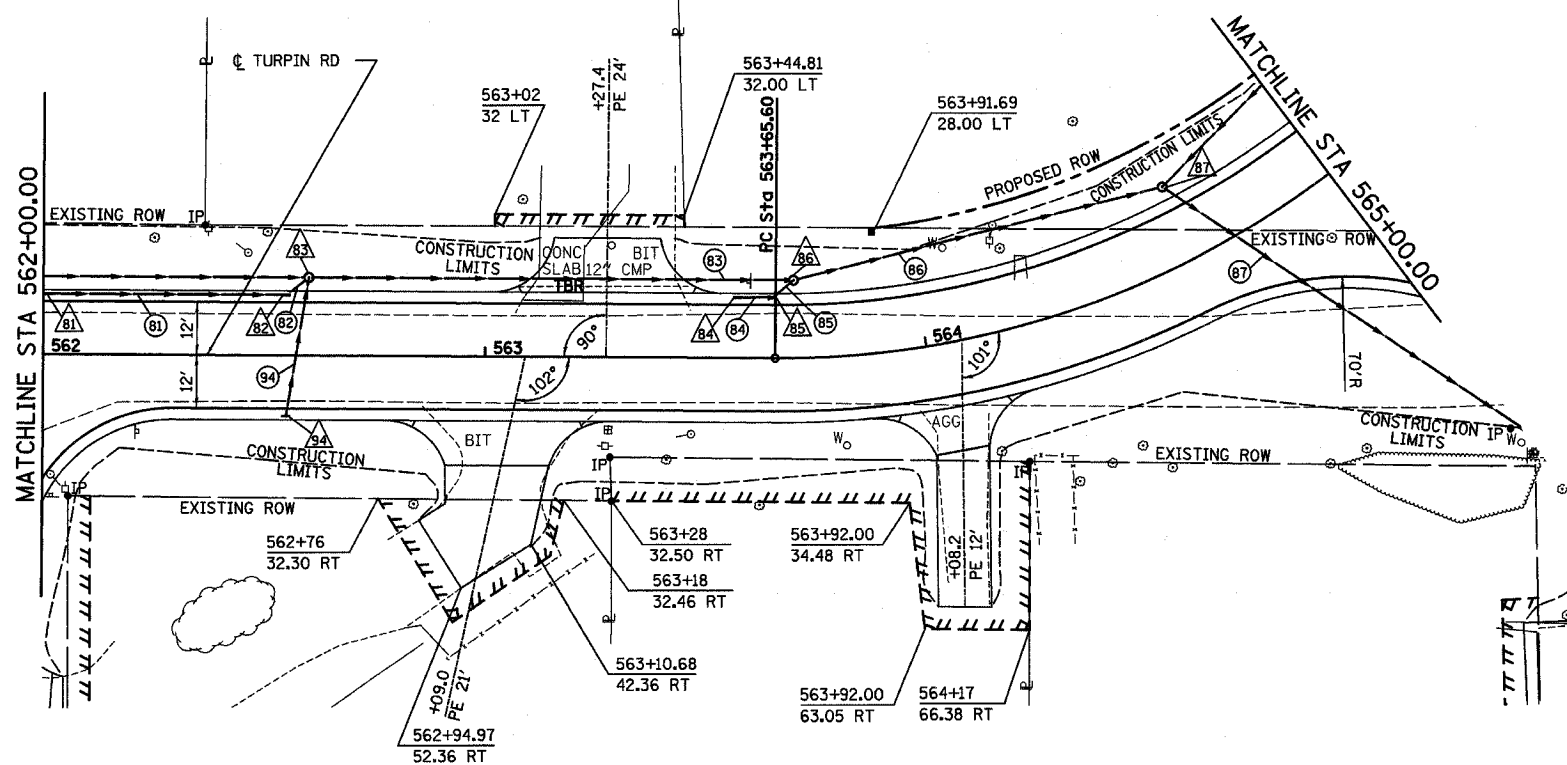
DATE	BY
DATE	BY
DATE	BY
DATE	BY
DATE	BY

DECATUR  
0171 425-4844  
CHICAGO  
0770 714-0050

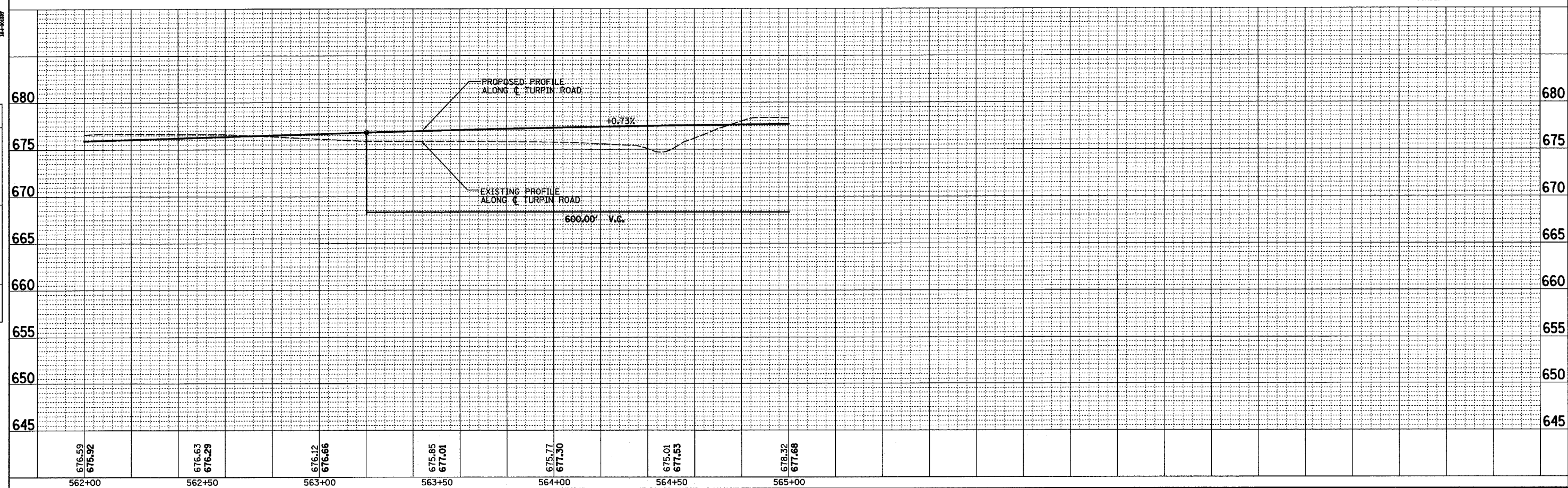
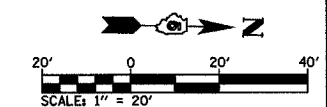
HOMER L. CHASTAIN & ASSOCIATES, LLP  
CONSULTING ENGINEERS  
14-0007

DATE	BY
DATE	BY
DATE	BY
DATE	BY
DATE	BY

PROFILE  
SURVEYED  
GRADES CHECKED  
BMS NOTED  
STRUCTURE NOTATIONS OK'D



PROP. CURVE TURPIN-4  
PI STA. = 565+77.00  
Δ = 91° 45' 36" (LT)  
D = 27° 56' 57"  
R = 205.00'  
T = 211.40'  
L = 328.31'  
E = 89.47'  
e = -4.00%  
P.C. STA = 563+65.60  
P.T. STA = 566+93.91  
FOR S.E. TRANSITIONS SEE  
SUPERELEVATION TRANSITION DETAILS



STA 562+00 TO STA 565+00