

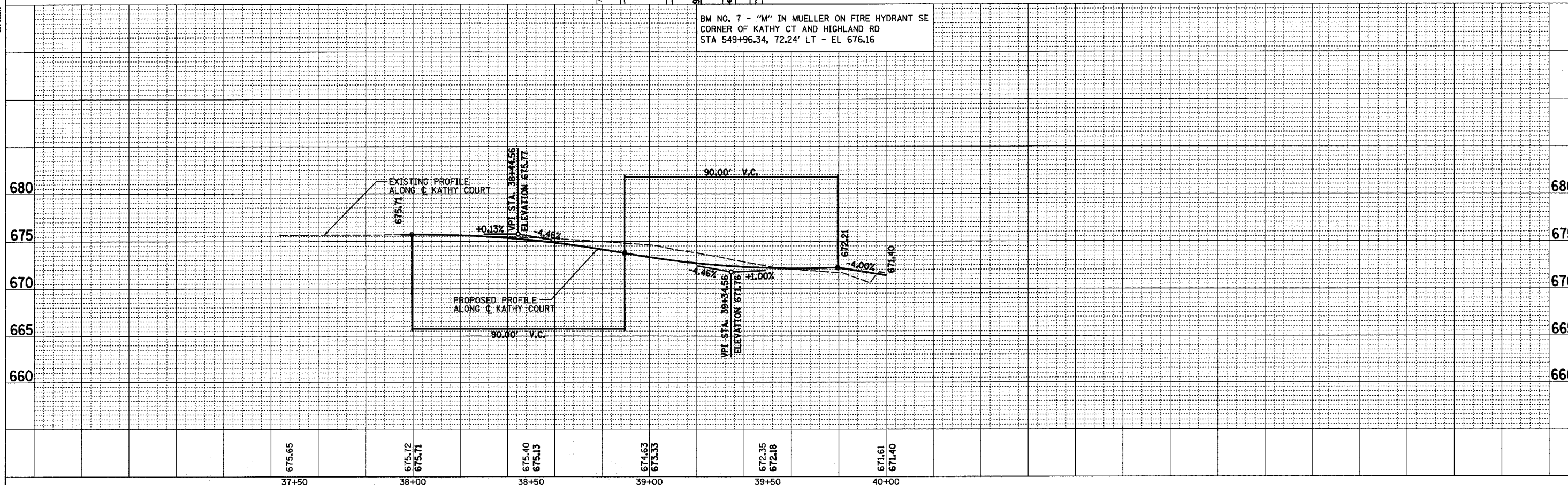
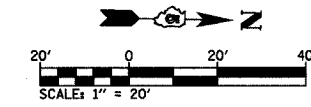
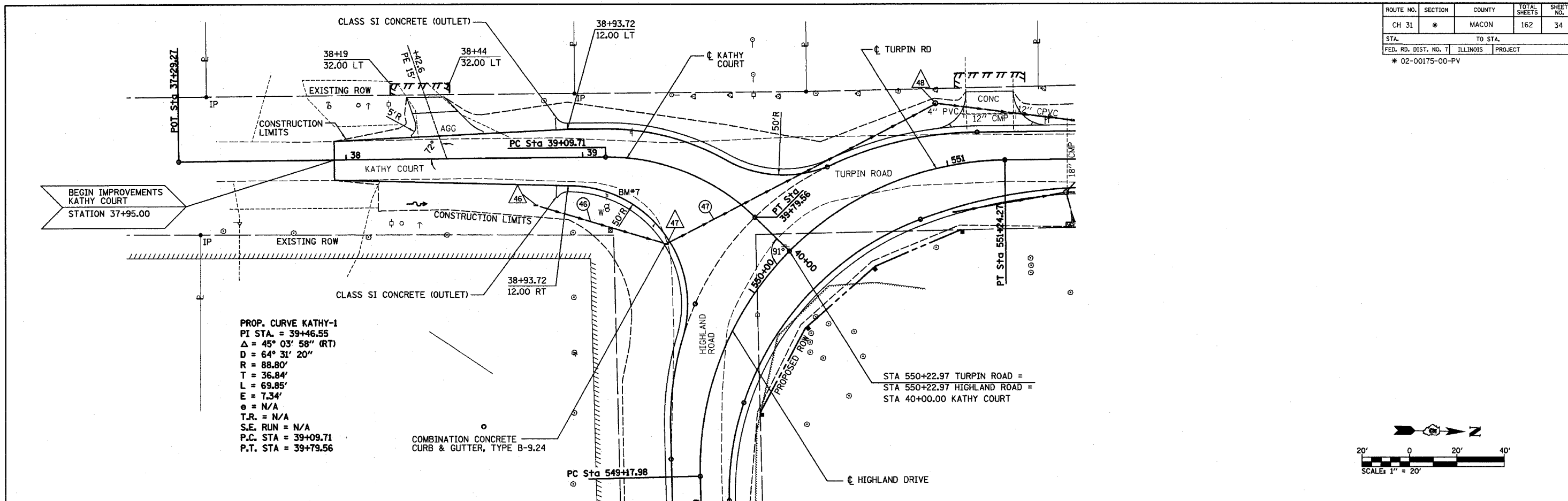
ROUTE NO.	SECTION	COUNTY	TOTAL SHEETS	SHEET NO.
CH 31	*	MACON	162	34
STA.		TO STA.		
FED. RD. DIST. NO. 7		ILLINOIS	PROJECT	
* 02-00175-00-PV				

PLAN	DATE
SURVEYED	
ALIGNED	
NOTED	
BY	
NO.	

DECATUR  
617-429-8444  
CHICAGO  
773-714-0050

ROMER L.  
**CHASTAIN**  
& ASSOCIATES, LLP  
CONSULTING ENGINEERS  
84-0087

PROFILE	DATE
SURVEYED	
GRADES CHECKED	
NOTED	
BY	
NO.	



STA 37+95 TO STA 40+00 KATHY COURT