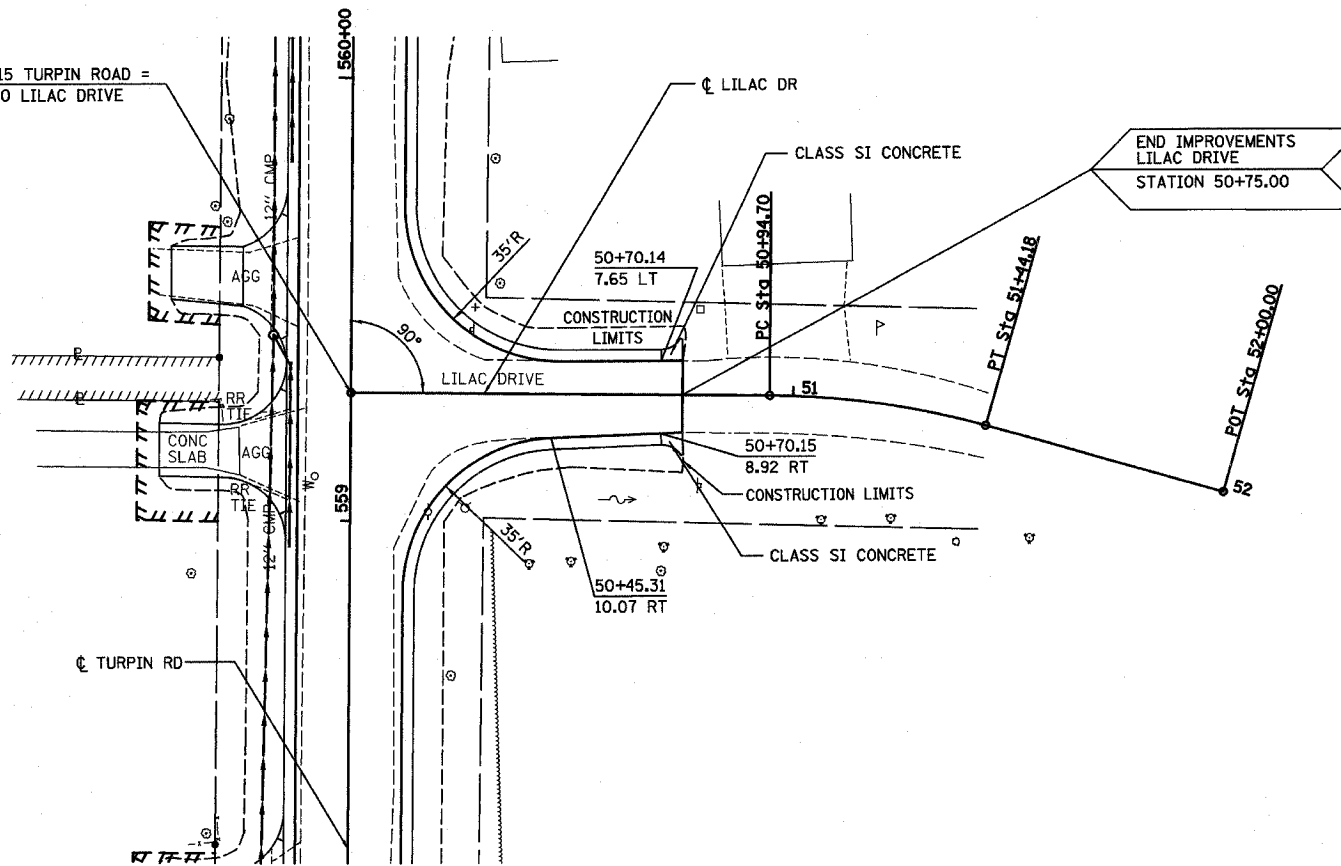


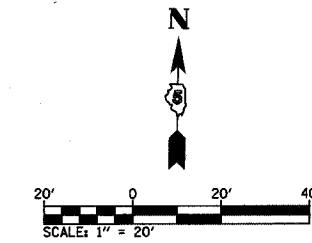
ROUTE NO.	SECTION	COUNTY	TOTAL SHEETS	SHEET NO.
CH 31	*	MACON	162	36
STA.		TO STA.		
FED. RD. DIST. NO. 7	ILLINOIS	PROJECT		

* 02-00175-00-PV

STA 559+28.15 TURPIN ROAD =
STA 50+00.00 LILAC DRIVE



PROP. CURVE LILAC-1
 PI STA. = 51+19.59
 $\Delta = 15^\circ 19' 21''$ (RT)
 $D = 30^\circ 58' 14''$
 $R = 185.00'$
 $T = 24.89'$
 $L = 49.47'$
 $E = 1.67'$
 $e = N/A$
 $T.R. = N/A$
 $S.E. RUN = N/A$
 $P.C. STA = 50+94.70$
 $P.T. STA = 51+44.18$



DATE	BY

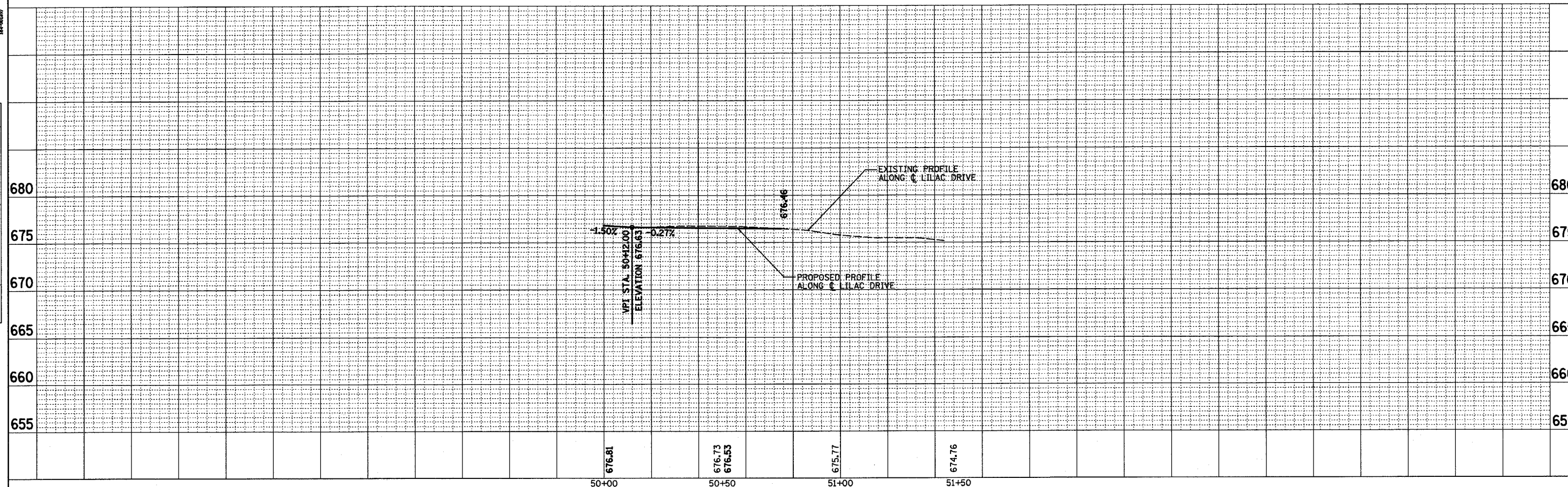
PLAN
 SURVEYED
 NOTEBOOK
 ALIGNMENT CHECKED
 RT. OF WAY CHECKED
 NO.

DECATUR
 917-423-8444
 CHICAGO
 0773 714-0650

HOMER L.
CHASTAIN
 & ASSOCIATES, LLP
 CONSULTING ENGINEERS
 14-0027

DATE	BY

PROFILE
 SURVEYED
 PLOTTED
 CHECKED
 BMS NOTED
 STRUCTURE NOTATIONS CHECKED
 NO.



STA 50+00 TO STA 50+75 LILAC DRIVE