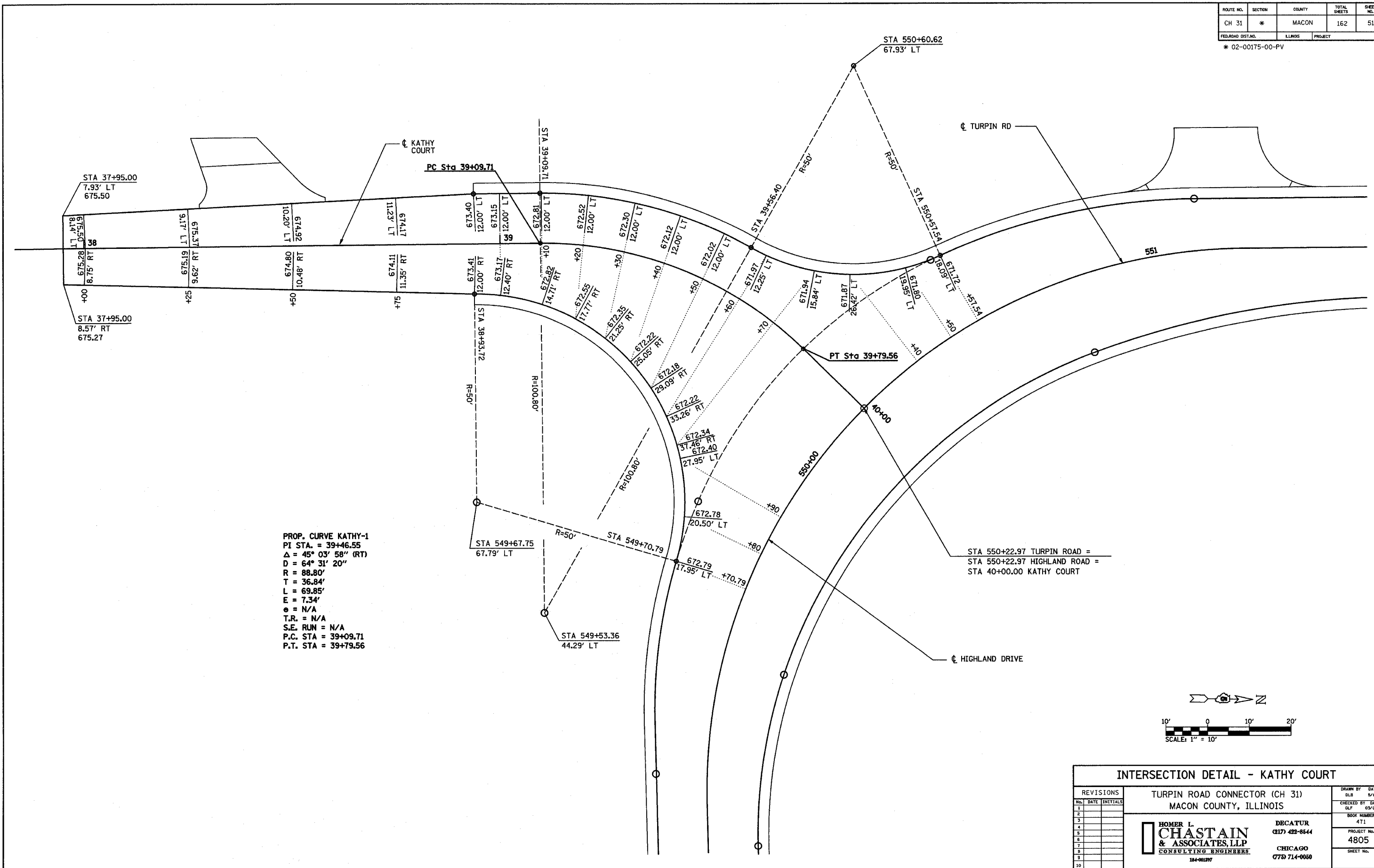


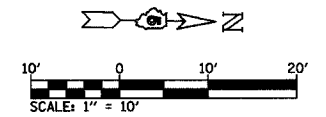
ROUTE NO.	SECTION	COUNTY	TOTAL SHEETS	SHEET NO.
CH 31	*	MACON	162	51
FED. ROAD DIST. NO.	LLMOS	PROJECT		

* 02-00175-00-PV



PROP. CURVE KATHY-1
 PI STA. = 39+46.55
 Δ = 45° 03' 58" (RT)
 D = 64° 31' 20"
 R = 88.80'
 T = 36.84'
 L = 69.85'
 E = 7.34'
 e = N/A
 T.R. = N/A
 S.E. RUN = N/A
 P.C. STA = 39+09.71
 P.T. STA = 39+79.56

STA 550+22.97 TURPIN ROAD =
 STA 550+22.97 HIGHLAND ROAD =
 STA 40+00.00 KATHY COURT



REVISIONS		TURPIN ROAD CONNECTOR (CH 31) MACON COUNTY, ILLINOIS		DRAWN BY	DATE
NO.	DATE	INITIALS		DLB	5/04
1				CHECKED BY	DATE
2				GLF	05/05
3				BOOK NUMBER	471
4				PROJECT NO.	4805
5				SHEET NO.	
6					
7					
8					
9					
10					

HOMER L. CHASTAIN & ASSOCIATES, LLP
 CONSULTING ENGINEERS
184-001397

DECATUR
(217) 422-8444

CHICAGO
(773) 714-0050