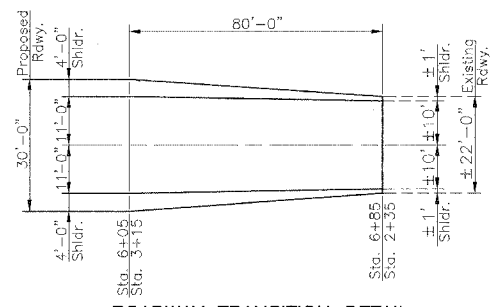
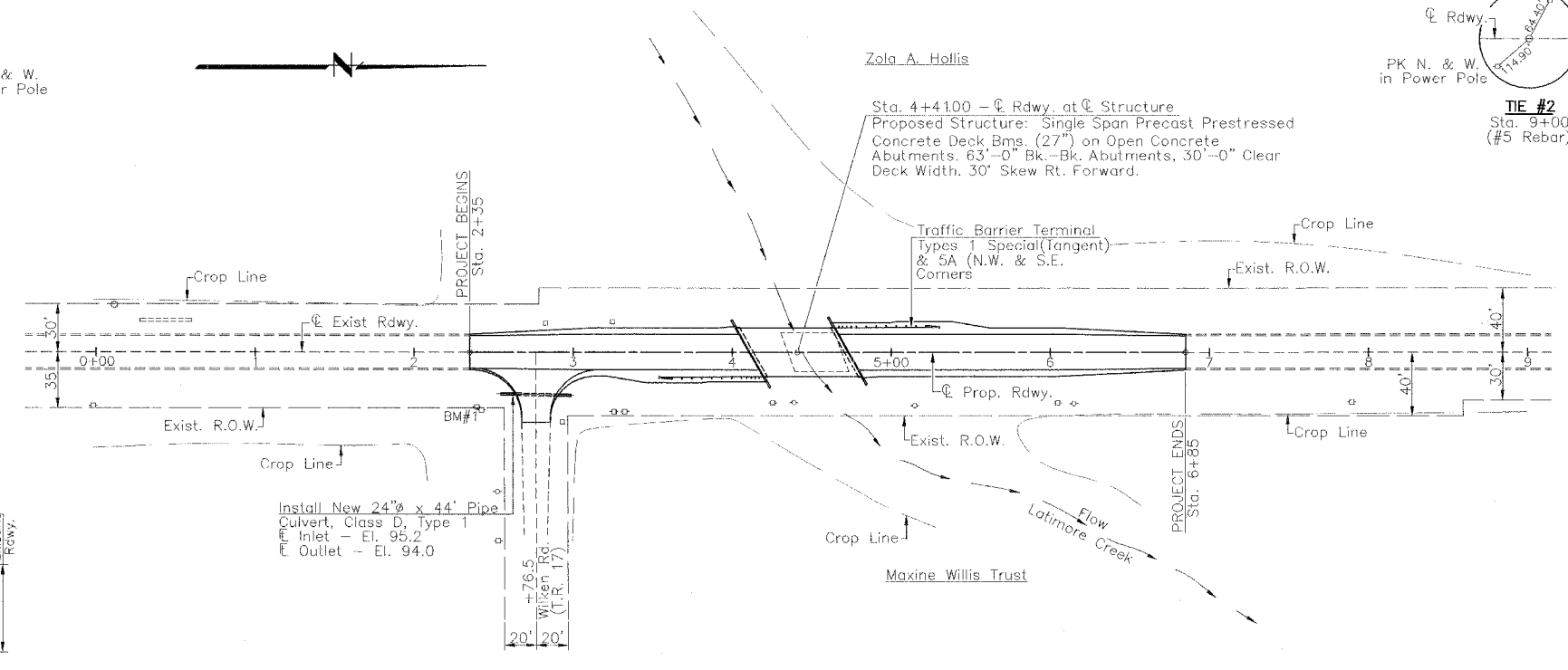
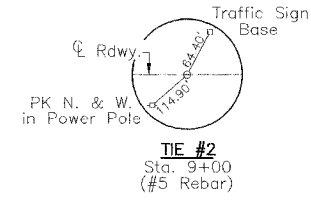
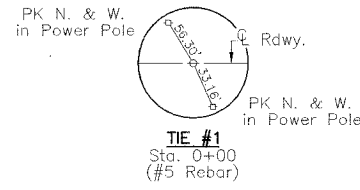
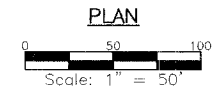


RTE.	SECTION	COUNTY	TOTAL SHEETS	SHEET NO.
F.A.S.575	*	MENARD	9	3
PROJECT				
* 01-00050-00-BR				

SECTION 15 T. 19 N. R. 7 W. 3rd P.M.



ROADWAY TRANSITION DETAIL



Seeding - Sta. 2+35 to Sta. 6+85 - R.O.W. to R.O.W. - 0.55 Acre

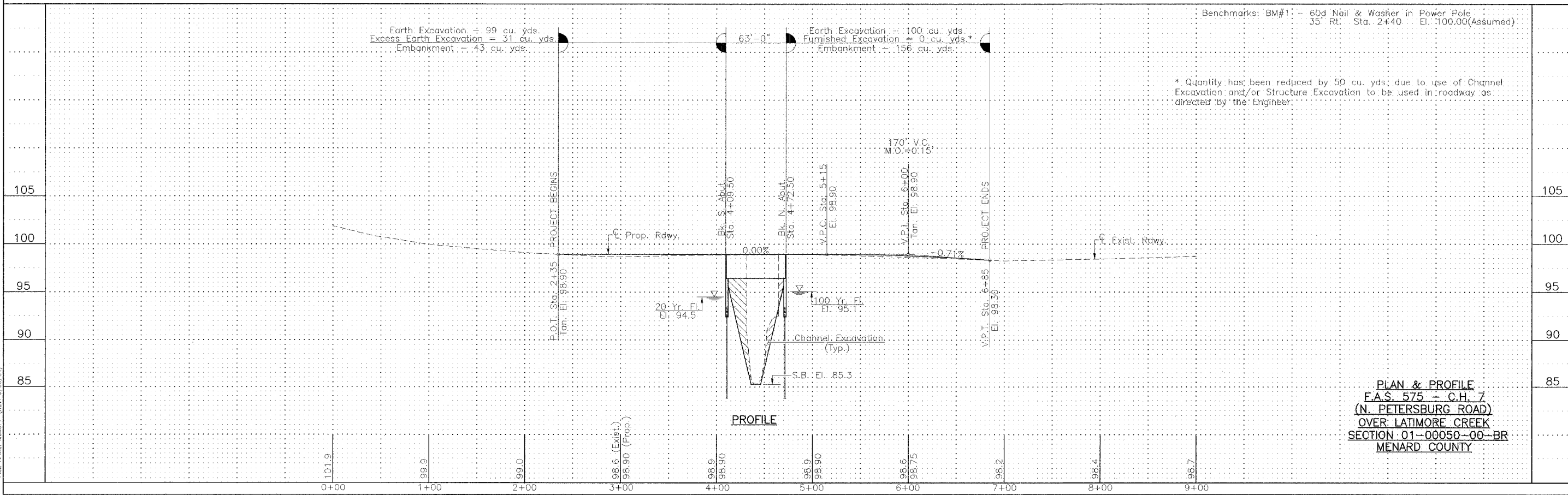
UTILITIES
 S.B.C.
 529 South 7th Street
 Springfield, Illinois 62721
 1-217-789-8367
 Menard Electric Cooperative
 P.O. Box 200
 Petersburg, Illinois 62675
 1-217-632-7746

Earth Excavation = 99 cu. yds.
 Excess Earth Excavation = 31 cu. yds.
 Embankment = 43 cu. yds.

Earth Excavation = 100 cu. yds.
 Furnished Excavation = 0 cu. yds.*
 Embankment = 156 cu. yds.

Benchmarks: BM#1 - 60d Nail & Washer in Power Pole 35' Rt. Sta. 2+40 El. 100.00 (Assumed)

* Quantity has been reduced by 50 cu. yds. due to use of Channel Excavation and/or Structure Excavation to be used in roadway as directed by the Engineer.



PROFILE

PLAN & PROFILE
 F.A.S. 575 - C.H. 7
 (N. PETERSBURG ROAD)
 OVER LATIMORE CREEK
 SECTION 01-00050-00-BR
 MENARD COUNTY

FILE NAME: MCDPPP (REV. 9/20/04)