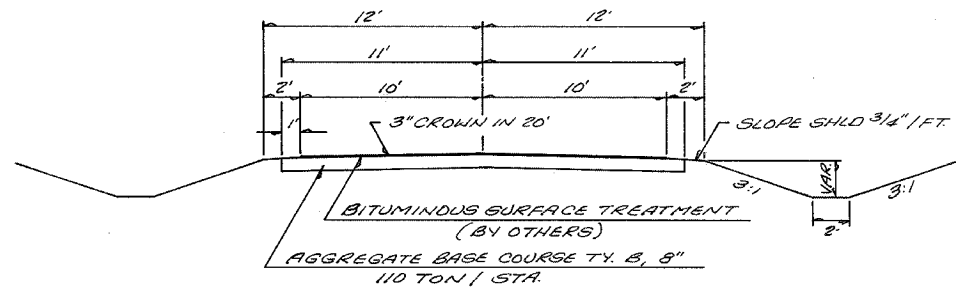
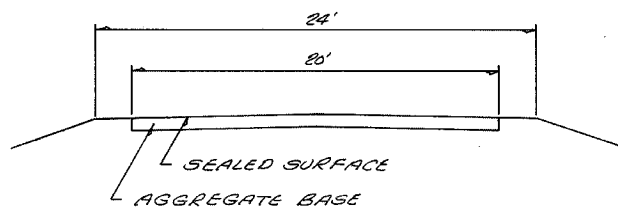


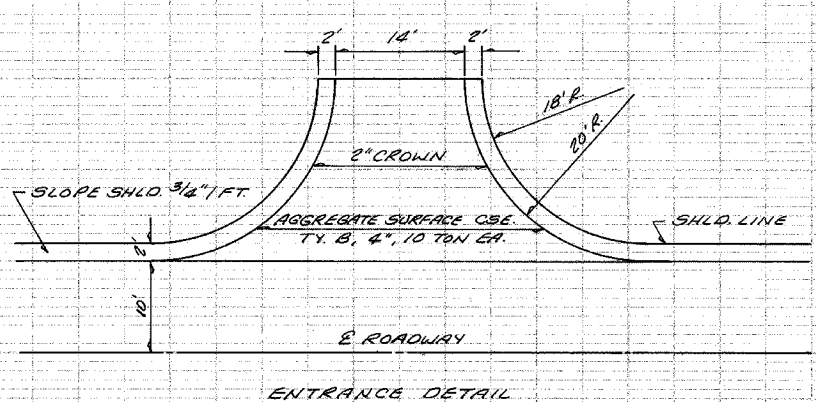
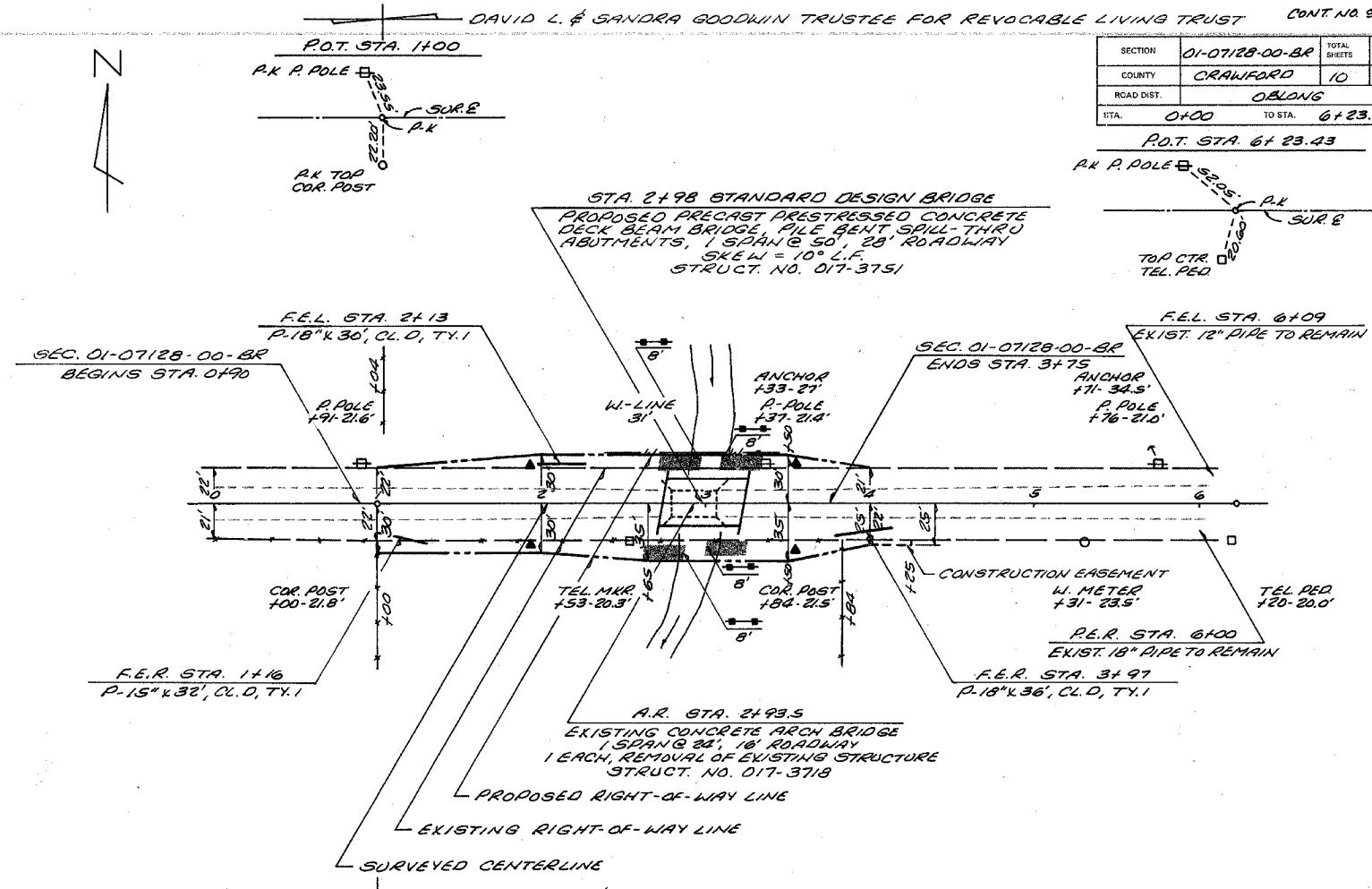
SECTION	01-07128-00-BR	TOTAL SHEETS	10	SHEET NO.	2
COUNTY	CRAWFORD				
ROAD DIST.	OBLONG				
STA.	0+00	TO STA.	6+23.43		



TYPICAL SECTION OF PROPOSED IMPROVEMENT



TYPICAL SECTION EXISTING ROADWAY



STONE RIPRAP DITCH

RT. STA. 2+60 TO 2+85	= 11 TON
LT. STA. 2+70 TO 2+95	= 11
RT. STA. 3+00 TO 3+25	= 11
LT. STA. 3+10 TO 3+35	= 11
TOTAL	= 44 TON

TEMPORARY DITCH CHECKS

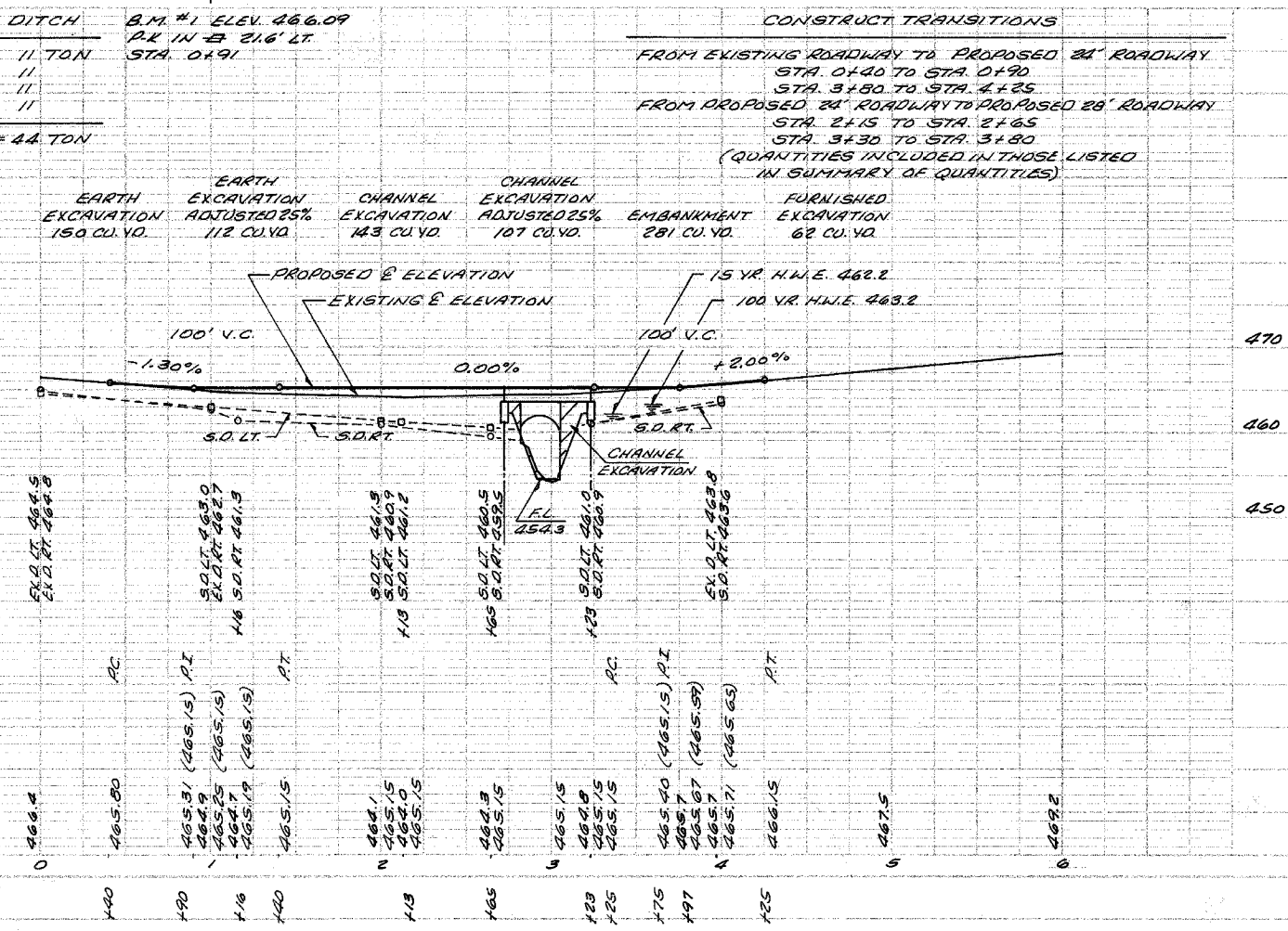
LT. STA. 1+95	= 1 EACH
RT. STA. 1+95	= 1
LT. STA. 3+50	= 1
RT. STA. 3+50	= 1
TOTAL	= 4 EACH

PERIMETER EROSION BARRIER

RT. STA. 2+85	= 8 FT
LT. STA. 2+90	= 8
RT. STA. 3+00	= 8
LT. STA. 3+15	= 8
TOTAL	= 32 FT

* PLACE AT TOP OF BANK

SEEDING CLASS 2 SPECIAL
STA. 0+40 - 4+25 = 0.30 ACRES



TELEPHONE: OTE COMMUNICATIONS
102 E. KIRKWOOD ST.
OQUIN, IL 62870
618-775-8222

ELECTRIC: NORRIS ELECTRIC CO-OP
8543 NORTH STATE HIGHWAY
NEWTON, IL 62448
618-783-8765

WATER: HARDINVILLE WATER CO.
2400 NORTH 575TH STREET
ROBINSON, IL 62454
618-557-3550

PROJECT NO. 01-07128-00-BR
DATE: 08/15/07
SCALE: AS SHOWN
BY: J. W. HARRIS, P.E.
CHECKED: J. W. HARRIS, P.E.
DATE: 08/15/07

PROJECT NO. 01-07128-00-BR
DATE: 08/15/07
SCALE: AS SHOWN
BY: J. W. HARRIS, P.E.
CHECKED: J. W. HARRIS, P.E.
DATE: 08/15/07