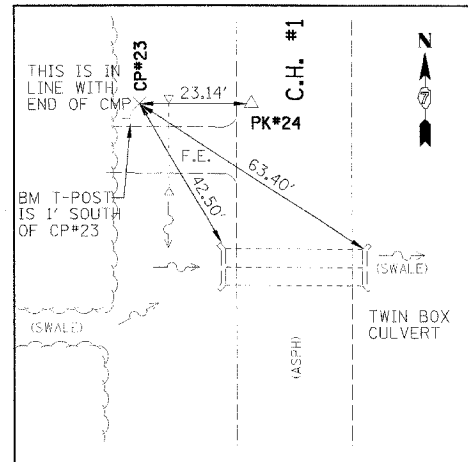
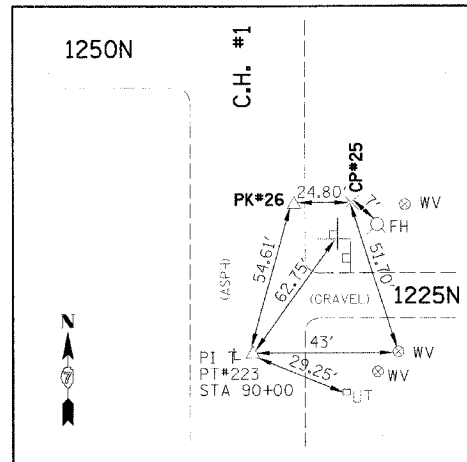


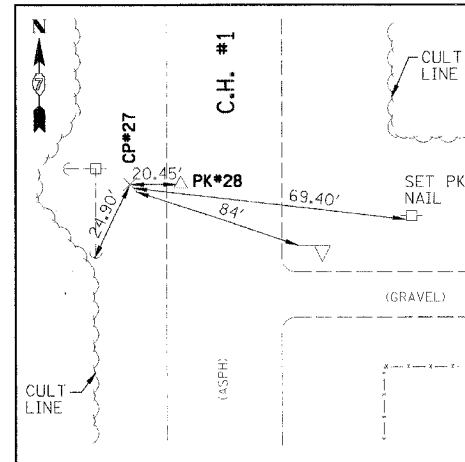
F.A.S. RTE.	SECTION	COUNTY	TOTAL SHEETS	SHEET NO.
694	03-00088-00-WR	CRAWFORD	56	7
STA.		TO STA.		
FED. ROAD DIST. NO.		ILLINOIS FED. AID PROJECT		
CONTRACT NO. 95433				



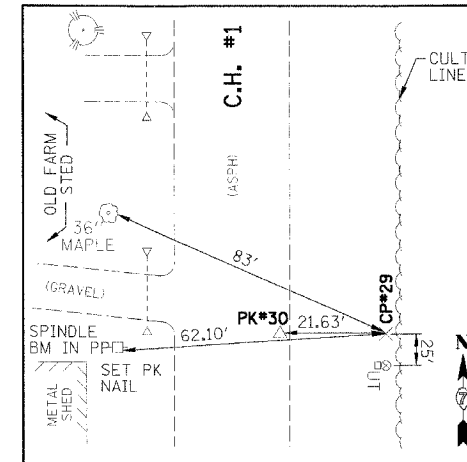
STA 77+01
CP#23 (IR) & PK#24



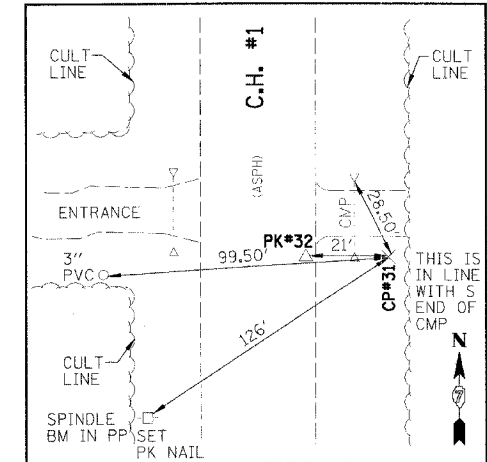
STA 90+53
CP#25 (IR) & PK#26



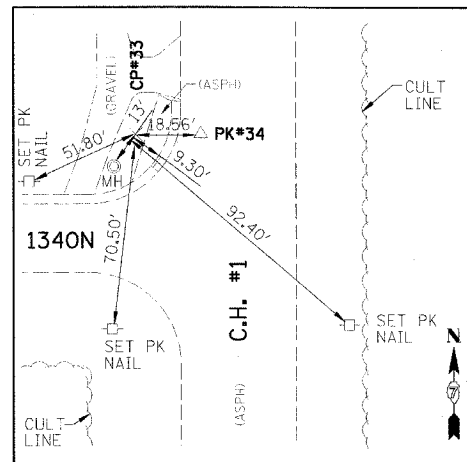
STA 105+41
CP#27 (IR) & PK#28



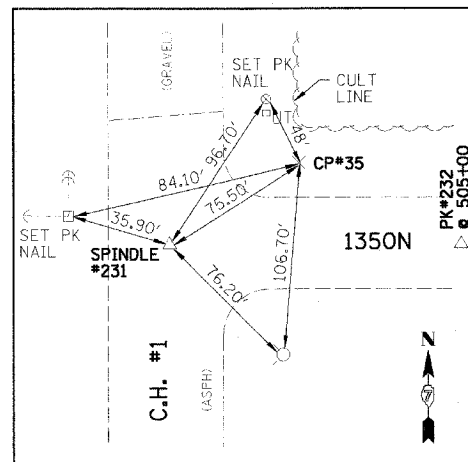
STA 118+42
CP#29 (IR) & PK#30



STA 134+18
CP#31 (IR) & PK#32



STA 147+60
CP#33 (IR) & PK#34



STA 10+00 = STA 157+16.04
CP#35 (IR) & SPINDLE#231

LEGEND

- PI = POINT OF INFLECTION
- CULT = CULTIVATION
- CP = CONTROL POINT
- IR = IRON ROD

CRAWFORD COUNTY FAS ROUTE 694 MFT SECTION 03-00088-00-WR	
CONTROL & SURVEY TIES	
DRAWN BY MAL DATE 12/29/04 CHECKED BY ERB	<div style="text-align: center;"> <p>200 N. 300. ST., Suite 200 Effingham, IL 62401 217/342-5888, 317/342-5883 fax</p> </div>
FILE NO. 24-7263 BOOK NO. 2646 SHEET NO. 7 OF 56	