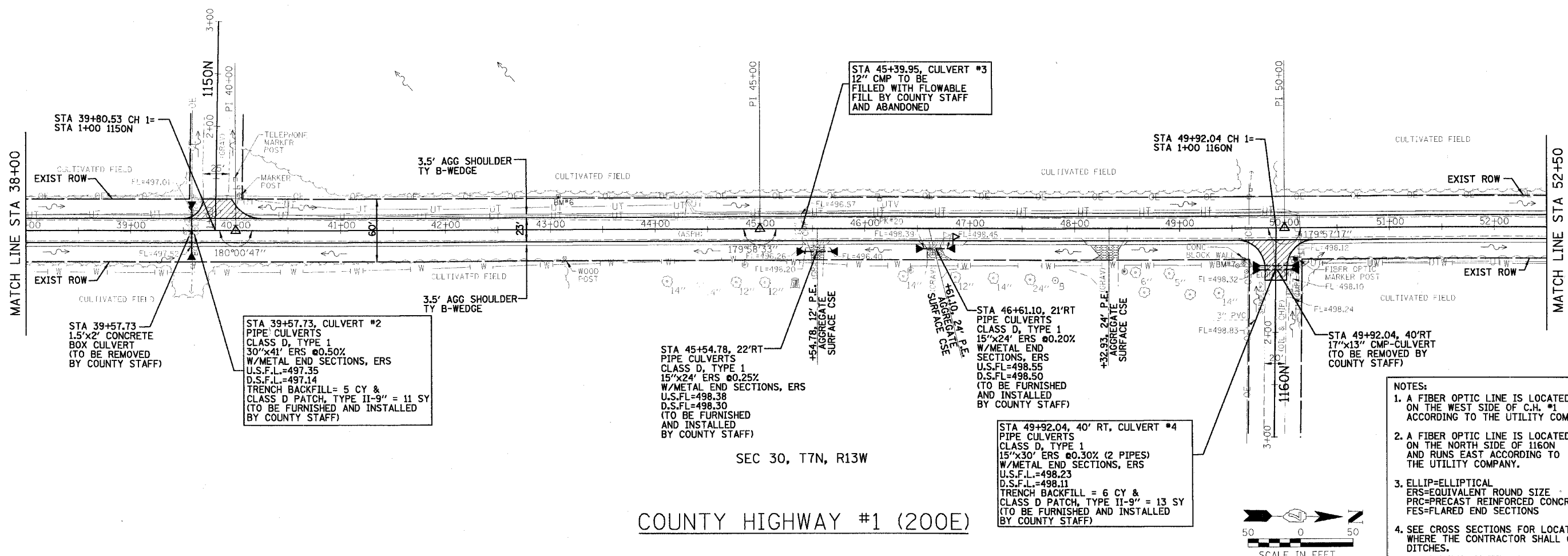


SEC 25, T7N, R14W

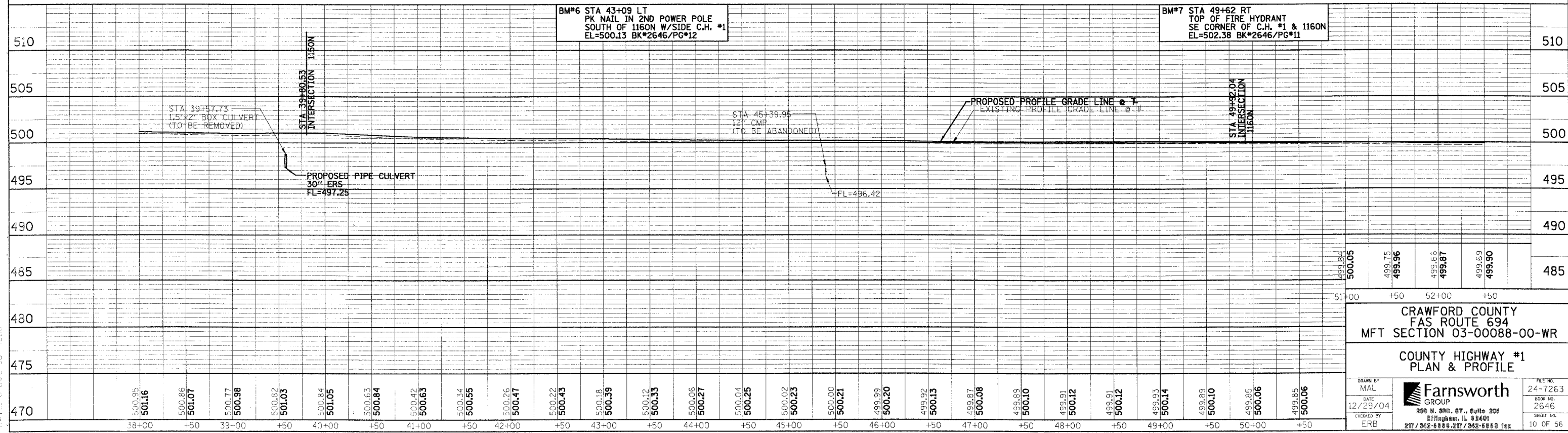
F.A.S. RTE.	SECTION	COUNTY	TOTAL SHEETS	SHEET NO.
694	03-00088-00-WR	CRAWFORD	56	10
STA. 38+00		TO STA. 52+50		
FED. ROAD DIST. NO.		ILLINOIS FED. AID PROJECT		
CONTRACT NO.		95433		



SEC 30, T7N, R13W

COUNTY HIGHWAY #1 (200E)

- NOTES:
1. A FIBER OPTIC LINE IS LOCATED ON THE WEST SIDE OF C.H. #1 ACCORDING TO THE UTILITY COMPANY.
  2. A FIBER OPTIC LINE IS LOCATED ON THE NORTH SIDE OF 1160N AND RUNS EAST ACCORDING TO THE UTILITY COMPANY.
  3. ELLIP=ELLIPTICAL  
ERS=EQUIVALENT ROUND SIZE  
PRC=PRECAST REINFORCED CONCRETE  
FES=FLARED END SECTIONS
  4. SEE CROSS SECTIONS FOR LOCATIONS WHERE THE CONTRACTOR SHALL GRADE DITCHES.



CRAWFORD COUNTY  
FAS ROUTE 694  
MFT SECTION 03-00088-00-WR

COUNTY HIGHWAY #1  
PLAN & PROFILE

DRAWN BY: MAL  
DATE: 12/29/04  
CHECKED BY: ERB

Farnsworth GROUP  
200 N. 3RD. ST., Suite 208  
Springfield, IL 62701  
217/342-5888, 217/342-5883 fax

FILE NO.: 24-7263  
BOOK NO.: 2646  
SHEET NO.: 10 OF 56

P:\Projects\694\Drawings\Profile.dgn  
 DATE: 12-29-04  
 10:10