

F.A.U. RTE.	SECTION	COUNTY	TOTAL SHEETS	SHEET NO.
9003	03-00044-00-BR	MADISON	24	4
STA. 9+00		TO STA. 17+00		
FED. ROAD DIST. NO.	ILLINOIS	FED. AID PROJECT		
TRAFFIC CONTROL PLAN - STAGE 1				
CONTRACT NO. 97256				

NOTES

THIS WORK PLAN SHALL BE USED IN CONJUNCTION WITH HIGHWAY STANDARD 701321. SEE HIGHWAY STANDARD 701321 FOR ADDITIONAL INFORMATION INCLUDING:

- REQUIRED TRAFFIC CONTROL SIGNS AND LOCATIONS
- INDUCTION LOOP DETECTOR LOCATIONS
- TEMPORARY TRAFFIC SIGNAL SEQUENCE OF OPERATIONS
- DOUBLE VERTICAL PANEL LOCATIONS
- TYPE C BI-DIRECTIONAL REFLECTORS.

ONE LANE OF TRAFFIC SHALL BE MAINTAINED ON POWDER MILL ROAD AT ALL TIMES.

SEE BRIDGE PLANS SHEET 10 FOR STAGE CONSTRUCTION CROSS SECTION THROUGH BRIDGE.

THE FURNISHING, PLACEMENT AND REMOVAL OF THE TYPE C BI-DIRECTIONAL REFLECTORS SHALL BE INCLUDED IN THE COST OF "TRAFFIC CONTROL AND PROTECTION, STANDARD 701321."

THE BOTTOM 6" OF THE TRAFFIC FACE OF THE TEMPORARY CONCRETE BARRIER SHALL BE PAINTED WITH WHITE TEMPORARY PAVEMENT MARKING. THE COST OF WHICH SHALL BE PAID FOR AS "TEMPORARY PAVEMENT MARKING."

EMERGENCY ACCESS SHALL BE PROVIDED AT ALL TIMES.

EXISTING CENTERLINE AND EDGE LINE MARKINGS WHICH CONFLICT WITH THE PROPOSED TRAFFIC PATTERN SHALL BE REMOVED. THE COST OF WHICH WILL BE PAID FOR AS "PAVEMENT MARKING REMOVAL."

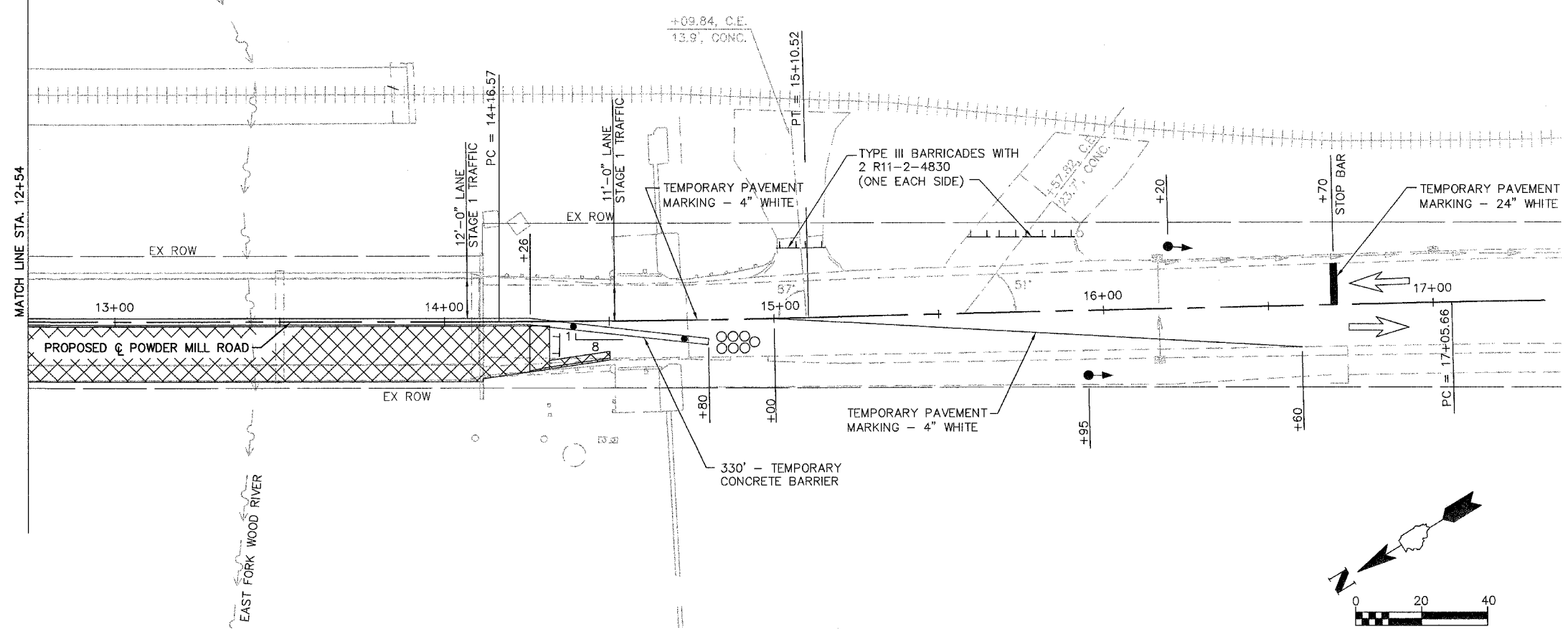
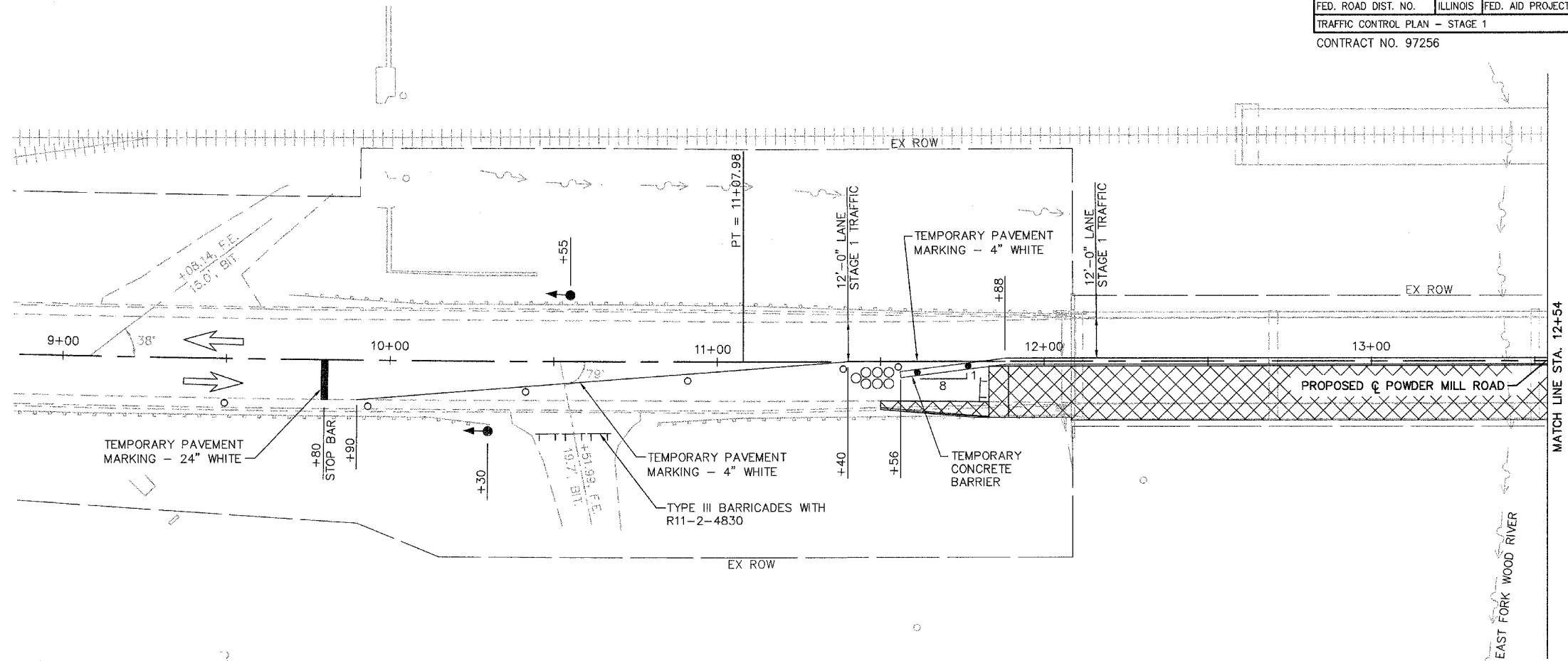
TEMPORARY RUMBLE STRIPS ARE NOT REQUIRED ON THIS PROJECT.

AFTER STAGE 1 AND STAGE 2 HAS BEEN COMPLETED, THE CONTRACTOR SHALL UTILIZE HIGHWAY STANDARD 701201 TO CONSTRUCT THE "PAVEMENT REPLACEMENT - SURFACE COURSE." TWO LANES OF TRAFFIC SHALL BE MAINTAINED WHEN WORKERS ARE NOT PRESENT.

SEE SPECIAL PROVISIONS FOR ADDITIONAL REQUIREMENTS.

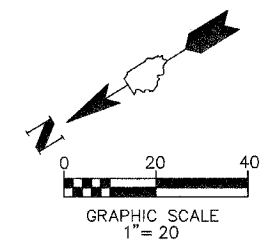
DATE	BY

DATE	BY



LEGEND

- ⊥ TYPE III BARRICADES
- ←● TEMPORARY TRAFFIC SIGNALS
- DRUM WITH STEADY BURNING LIGHT
- ⊙ IMPACT ATTENUATOR
- STEADY BURNING LIGHTS AND DOUBLE VERTICAL PANELS
- ▨ WORK ZONE



TRAFFIC CONTROL PLAN - STAGE 1