

F.A.P. RTE.	SECTION	COUNTY	TOTAL SHEETS	SHEET NO.
332	31-1-2, 31B	SALINE	199	1

+2
201 Total Sheets

STATE OF ILLINOIS
DEPARTMENT OF TRANSPORTATION
DIVISION OF HIGHWAYS

**PROPOSED
HIGHWAY PLANS**

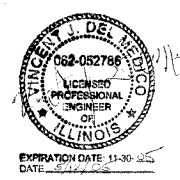
F.A.P. 332 (U.S. ROUTE 45)
SECTION 31-1-2, 31B
PROJECT: NHF-0332(079)
SALINE COUNTY
C-99-084-01



FOR INDEX OF SHEETS, SEE SHEET NO. 2
FOR SUMMARY OF QUANTITIES, SEE SHEETS NO. 4-6

DESIGN DESIGNATION
1510(25) ARTERIAL 4.27 (FD-20)

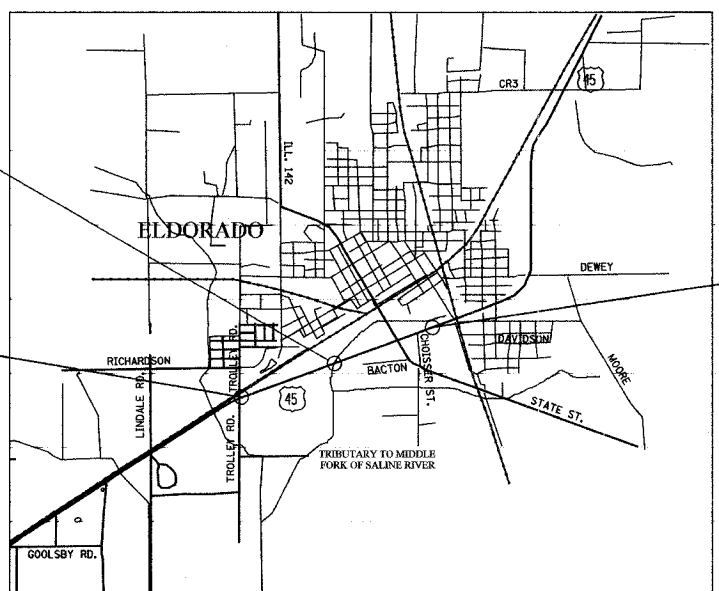
TRAFFIC INFORMATION
US ROUTE 45:
2001 ADT: 9400
IL 142:
2001 ADT: 8300



STA. 365+86.00
PROPOSED STRUCTURE SNO83-2014
REINFORCED CONCRETE TRIPLE 9' X 9'
BOX CULVERT, 62' ROADWAY WIDTH,
130'-9 3/4" LONG PARAPET TO PARAPET
EXISTING STRUCTURE SN 083-0008

BEGIN PROJECT
STA. 338+65.10

END PROJECT
STA. 395+31.47



EAST ELDORADO TOWNSHIP
NOT TO SCALE

NET LENGTH OF CENTERLINE 5,666.37 FT.
GROSS LENGTH OF PROJECT 5,666.37 FT., 1.073 MI.
NET LENGTH OF PROJECT 5,666.37 FT., 1.073 MI.

ab alfred benesch & company
CONSULTING ENGINEERS
205 NORTH MICHIGAN AVENUE, CHICAGO, ILLINOIS 60601

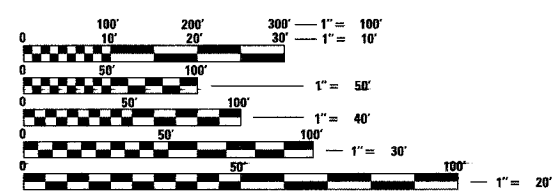
STATE OF ILLINOIS
DEPARTMENT OF TRANSPORTATION
DIVISION OF HIGHWAYS

SUBMITTED May 20 20 05
Mary C. Lamic
DEPUTY DIRECTOR OF HIGHWAYS, REGION ENGINEER

July 1 20 05
Mike Nire
ENGINEER OF DESIGN / AND ENVIRONMENT

July 1 20 05
Victor Mader
DIRECTOR OF HIGHWAYS, CHIEF ENGINEER

**PRINTED BY THE AUTHORITY
OF THE STATE OF ILLINOIS**



FULL SIZE PLANS HAVE BEEN PREPARED USING STANDARD
ENGINEERING SCALES. REDUCED SIZED PLANS WILL NOT
CONFORM TO STANDARD SCALES. IN MAKING MEASUREMENTS
ON REDUCED PLANS, THE ABOVE SCALES MAY BE USED.

J.U.L.I.E.
JOINT UTILITY LOCATION INFORMATION FOR EXCAVATION
1-800-892-0123

CONTRACT NO. 98631

PROJECT ENGINEER: CHARLES STEIN (618) - 549-2171
SENIOR SQUAD LEADER: NANCY HEIL CENTREX 782-4554

M:\PROJECTS\ROADWAY\CONTRACT\GENE
Referenced File
061802-0-352624.dgn
Active File
C:\01-352624.dgn