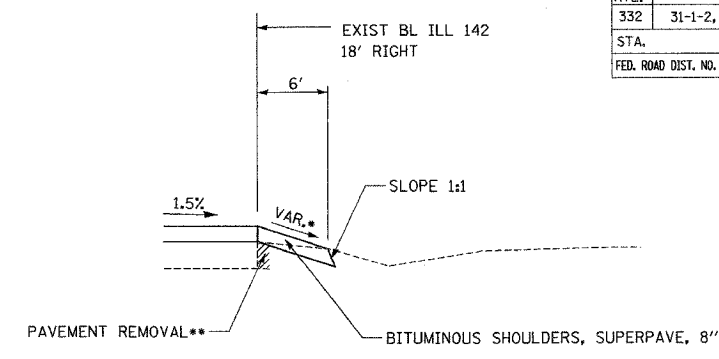
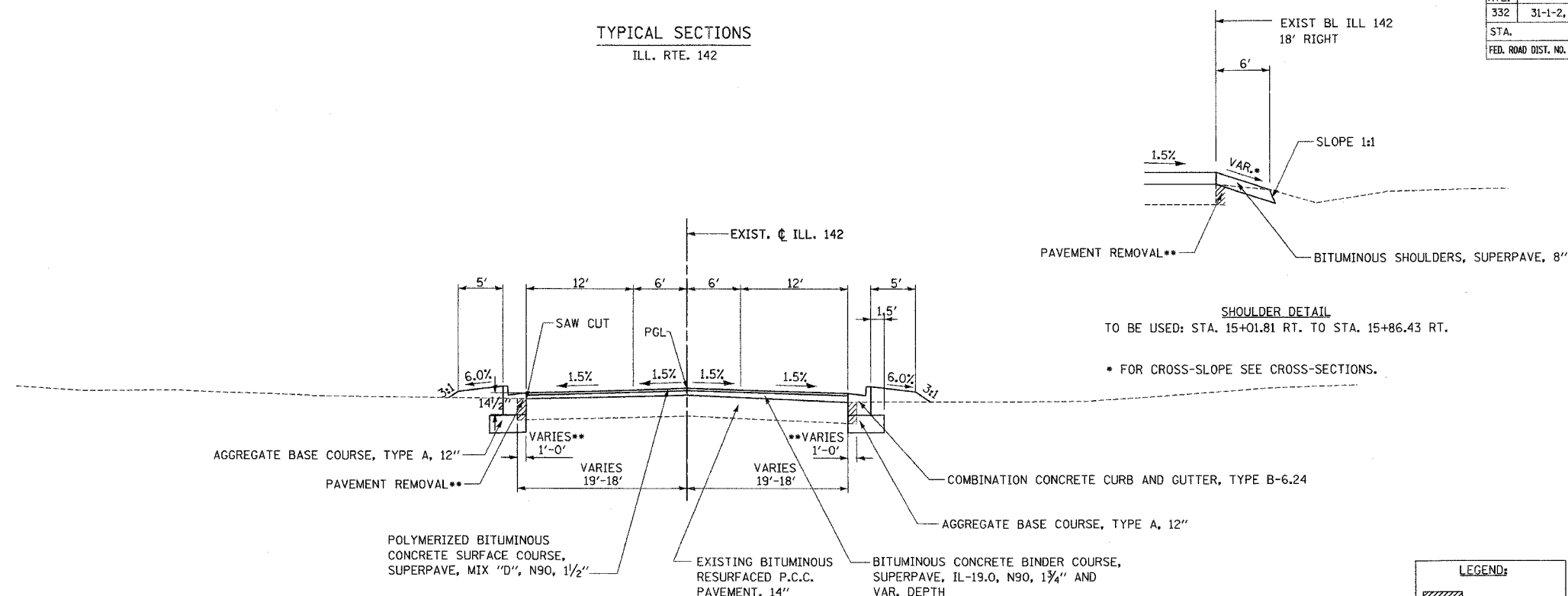


| F.A.P. RTE. | SECTION | COUNTY | TOTAL SHEETS | SHEET NO. |
|---------------------|-------------|---------------------------|--------------|-----------|
| 332 | 31-1-2, 31B | SALINE | 199 | 13 |
| STA. | | TO STA. | | |
| FED. ROAD DIST. NO. | | ILLINOIS FED. AID PROJECT | | |

TYPICAL SECTIONS
ILL. RTE. 142



SHOULDER DETAIL
TO BE USED: STA. 15+01.81 RT. TO STA. 15+86.43 RT.
• FOR CROSS-SLOPE SEE CROSS-SECTIONS.

LEGEND:

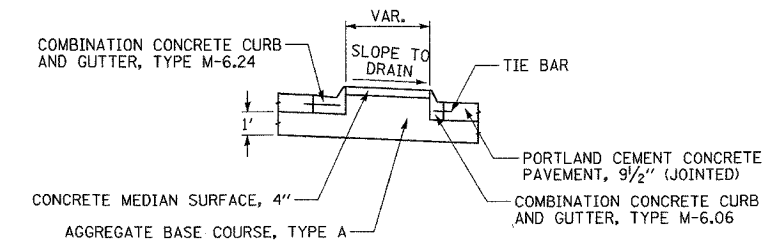
| | |
|--|---------|
| | REMOVAL |
|--|---------|

NOMINAL THICKNESS FOR EACH LIFT OF BINDER MUST BE AS FOLLOWS:

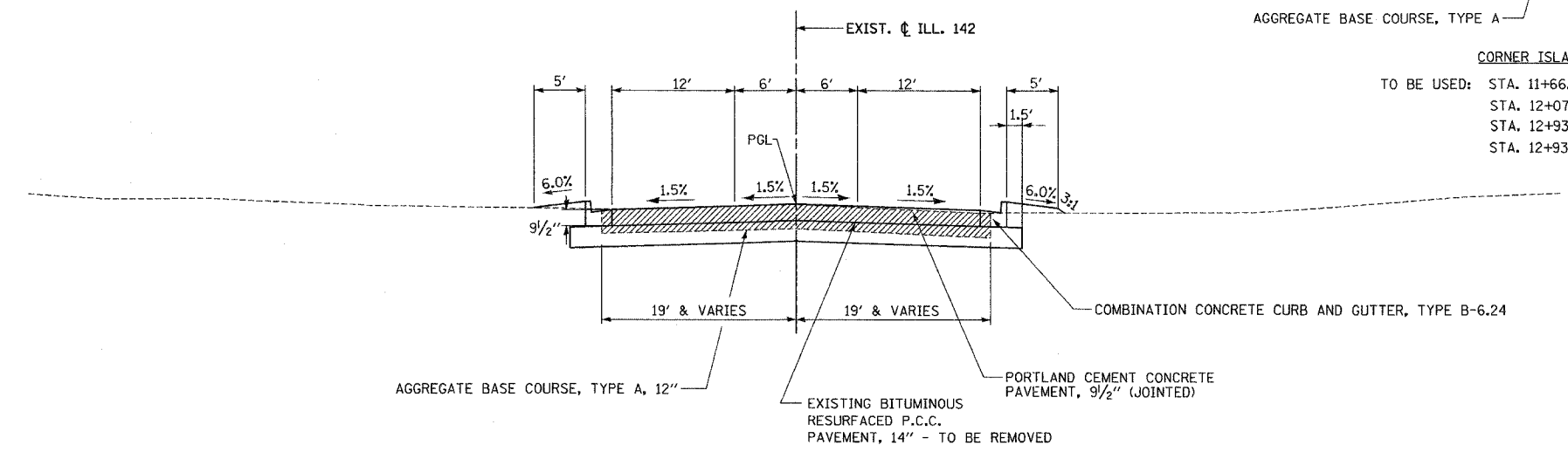
| 13" BINDER | |
|------------|-----------|
| 1st LIFT | 5" (MAX.) |
| 2nd LIFT | 3" |
| 3rd LIFT | 3" |
| 4th LIFT | 2" (MAX.) |

ILL. RTE. 142
TO BE USED: STA. 15+50.00 TO 15+86.43

** 0'-1' WIDE PAVEMENT REMOVAL:
STA. 15+50.00 TO 15+55



CORNER ISLAND DETAIL
TO BE USED: STA. 11+66.53 RT. TO 12+27.65 RT.
STA. 12+07.04 LT. TO 12+33.61 LT.
STA. 12+93.47 RT. TO 13+17.06 RT.
STA. 12+93.47 LT. TO 13+39.81 LT.



ILL. RTE. 142
TO BE USED: STA. 11+66.53 TO 12+30.63
STA. 12+93.47 TO 15+50.00

NOTE:
FOR CORNER ISLAND GEOMETRY AND CORNER RADII SEE GEOMETRICS SHEET 84.

M/PROCESSED ROADWAY/CONTRACT/TYPICAL SECTIONS/
 Active File Reference Files
 1901-35524.dwg
 1901-35524.dwg

DRAWN BY
 CHECKED BY