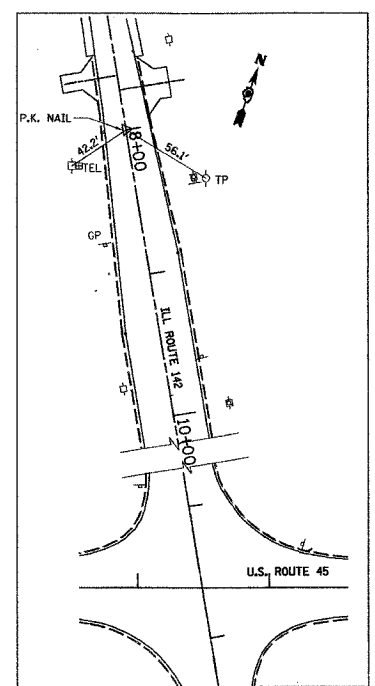


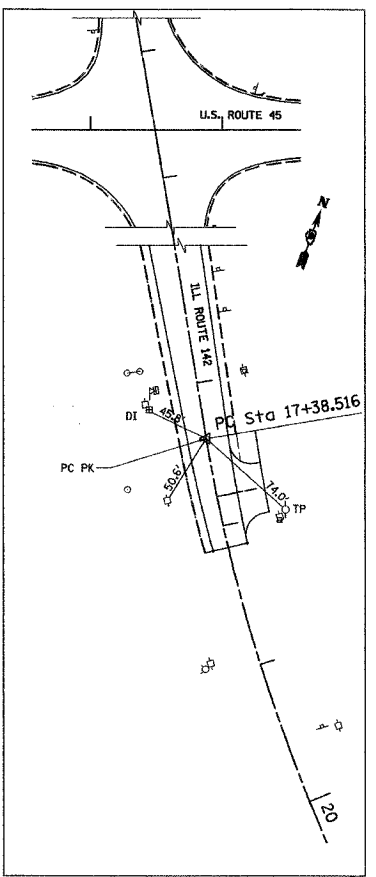
F.A.P. RTE.	SECTION	COUNTY	TOTAL SHEETS	SHEET NO.
332	31-1-2, 31B	SALINE	199	26
STA.		TO STA.		
FED. ROAD DIST. NO.		ILLINOIS FED. AID PROJECT		

COORDINATE DATA			
STATION	NORTHING	EASTING	REMARKS
388+48.82	415,297.28	953,408.67	P.O.T. MAINLINE & ILL. 142
391+89.14	415,413.42	953,728.56	P.O.T. MAINLINE
396+89.14	415,584.05	954,198.54	P.O.T. MAINLINE
0+54.50	416,349.76	952,816.66	P.O.T. ILL. 142
21+97.48	414,481.98	953,867.27	P.I. CURVE 31 ILL. 142
17+38.52	414,882.00	953,642.26	P.C. CURVE 31 ILL. 142
26+13.00	414,342.70	954,304.59	P.T. CURVE 31 ILL. 142
28+76.42	414,262.76	954,555.59	P.O.T. ILL. 142

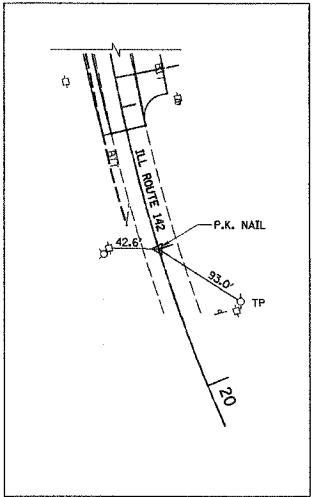
CURVE DATA											
CURVE	P.I. STATION	Δ	D	T	L	R	M	CHORD			
31	21+97.48	42° 58' 38"	4° 54' 52"	458.97'	874.48'	1,165.83'	81.04'	854.13'			



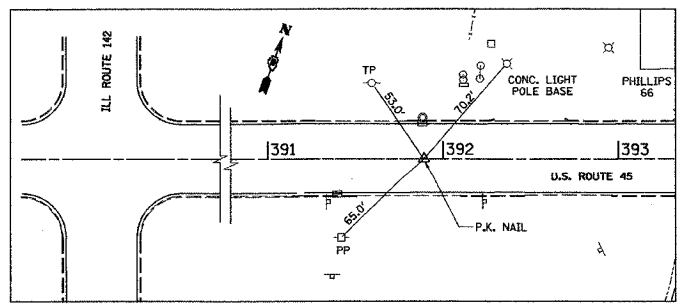
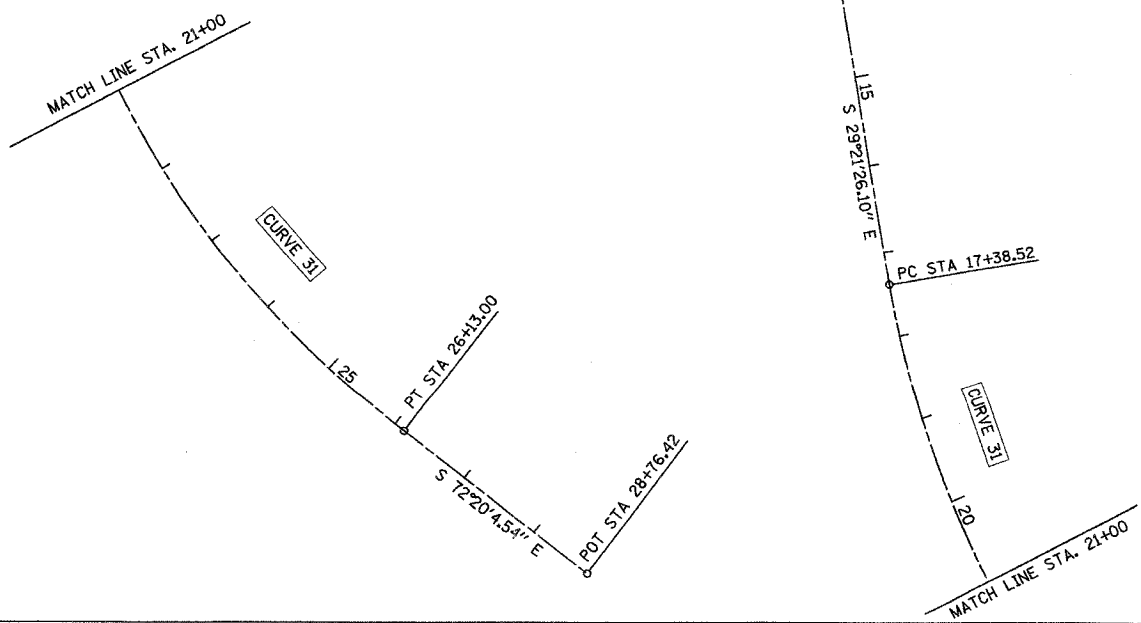
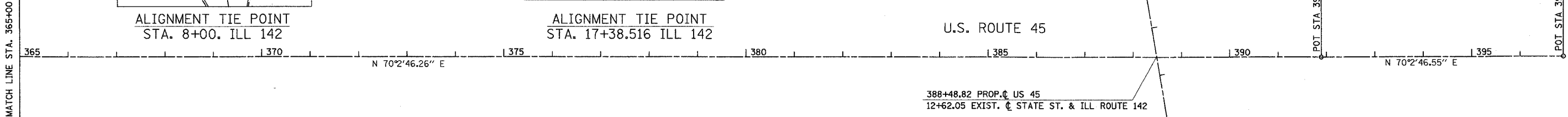
ALIGNMENT TIE POINT
STA. 8+00. ILL 142



ALIGNMENT TIE POINT
STA. 17+38.516 ILL 142



ALIGNMENT TIE POINT
STA. 19+00 ILL 142



ALIGNMENT TIE POINT
STA. 391+89.14 U.S. ROUTE 45

**U. S. ROUTE 45
ALIGNMENT & TIES
STA. 365+00.00 TO STA. 396+89.14
INCL. ILL ROUTE 142**

1"= 100'

DRAWN BY
CHECKED BY

PROJECT NO. 332
SECTION 31-1-2, 31B
COUNTY SALINE
TOTAL SHEETS 199
SHEET NO. 26