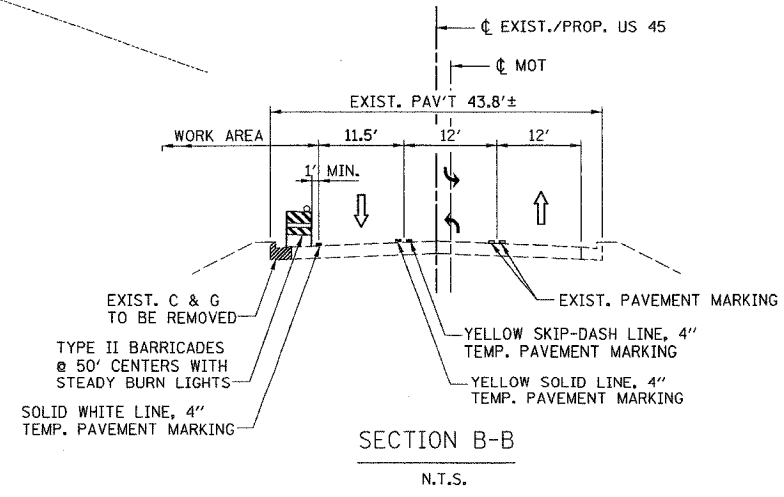
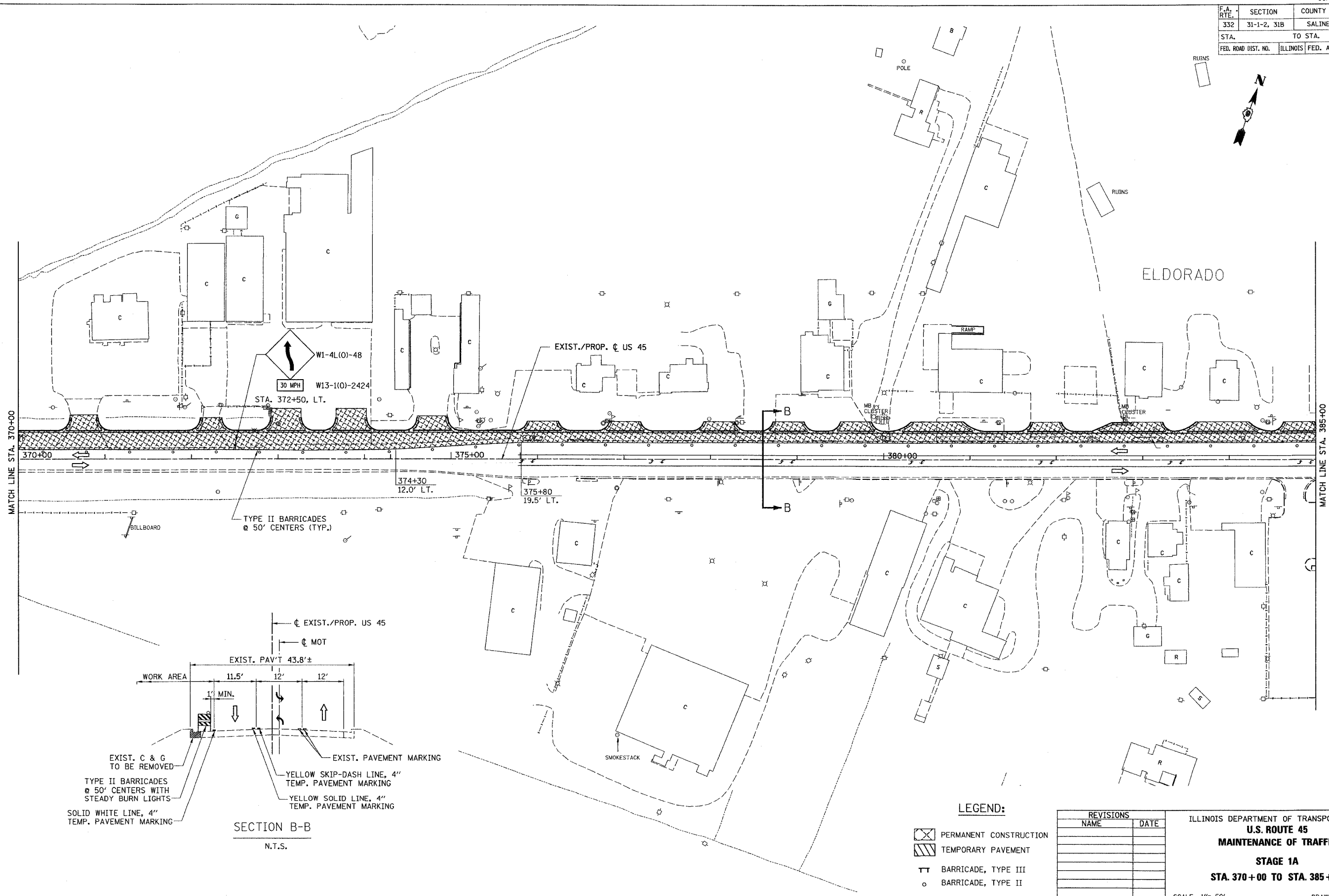


F.A. RTE.	SECTION	COUNTY	TOTAL SHEETS	SHEET NO.
332	31-1-2, 31B	SALINE	199	31
STA.		TO STA.		
FED. ROAD DIST. NO.	ILLINOIS	FED. AID PROJECT		



- LEGEND:**
- PERMANENT CONSTRUCTION
 - TEMPORARY PAVEMENT
 - BARRICADE, TYPE III
 - BARRICADE, TYPE II

REVISIONS	
NAME	DATE

ILLINOIS DEPARTMENT OF TRANSPORTATION
U.S. ROUTE 45
MAINTENANCE OF TRAFFIC
STAGE 1A
STA. 370+00 TO STA. 385+00

SCALE: 1" = 50'
 DATE: _____
 DRAWN BY: SK
 CHECKED BY: AW

PROJECT: PROSS/35/ROADWAY/COMMON
 DRAWN BY: SK
 CHECKED BY: AW
 DATE: 10/28/03
 NO. 35/28/03/01
 NO. 35/28/03/02
 NO. 35/28/03/03
 NO. 35/28/03/04
 NO. 35/28/03/05
 NO. 35/28/03/06
 NO. 35/28/03/07
 NO. 35/28/03/08
 NO. 35/28/03/09
 NO. 35/28/03/10
 NO. 35/28/03/11
 NO. 35/28/03/12
 NO. 35/28/03/13
 NO. 35/28/03/14
 NO. 35/28/03/15
 NO. 35/28/03/16
 NO. 35/28/03/17
 NO. 35/28/03/18
 NO. 35/28/03/19
 NO. 35/28/03/20
 NO. 35/28/03/21
 NO. 35/28/03/22
 NO. 35/28/03/23
 NO. 35/28/03/24
 NO. 35/28/03/25
 NO. 35/28/03/26
 NO. 35/28/03/27
 NO. 35/28/03/28
 NO. 35/28/03/29
 NO. 35/28/03/30
 NO. 35/28/03/31
 NO. 35/28/03/32
 NO. 35/28/03/33
 NO. 35/28/03/34
 NO. 35/28/03/35
 NO. 35/28/03/36
 NO. 35/28/03/37
 NO. 35/28/03/38
 NO. 35/28/03/39
 NO. 35/28/03/40
 NO. 35/28/03/41
 NO. 35/28/03/42
 NO. 35/28/03/43
 NO. 35/28/03/44
 NO. 35/28/03/45
 NO. 35/28/03/46
 NO. 35/28/03/47
 NO. 35/28/03/48
 NO. 35/28/03/49
 NO. 35/28/03/50
 NO. 35/28/03/51
 NO. 35/28/03/52
 NO. 35/28/03/53
 NO. 35/28/03/54
 NO. 35/28/03/55
 NO. 35/28/03/56
 NO. 35/28/03/57
 NO. 35/28/03/58
 NO. 35/28/03/59
 NO. 35/28/03/60
 NO. 35/28/03/61
 NO. 35/28/03/62
 NO. 35/28/03/63
 NO. 35/28/03/64
 NO. 35/28/03/65
 NO. 35/28/03/66
 NO. 35/28/03/67
 NO. 35/28/03/68
 NO. 35/28/03/69
 NO. 35/28/03/70
 NO. 35/28/03/71
 NO. 35/28/03/72
 NO. 35/28/03/73
 NO. 35/28/03/74
 NO. 35/28/03/75
 NO. 35/28/03/76
 NO. 35/28/03/77
 NO. 35/28/03/78
 NO. 35/28/03/79
 NO. 35/28/03/80
 NO. 35/28/03/81
 NO. 35/28/03/82
 NO. 35/28/03/83
 NO. 35/28/03/84
 NO. 35/28/03/85
 NO. 35/28/03/86
 NO. 35/28/03/87
 NO. 35/28/03/88
 NO. 35/28/03/89
 NO. 35/28/03/90
 NO. 35/28/03/91
 NO. 35/28/03/92
 NO. 35/28/03/93
 NO. 35/28/03/94
 NO. 35/28/03/95
 NO. 35/28/03/96
 NO. 35/28/03/97
 NO. 35/28/03/98
 NO. 35/28/03/99
 NO. 35/28/03/100