

F.A. RTE.	SECTION	COUNTY	TOTAL SHEETS	SHEET NO.
332	31-1-2, 31B	SALINE	199	41
STA.	TO STA.			
FED. ROAD DIST. NO.	ILLINOIS	FED. AID PROJECT		

PROP. CURVE 505
 PI STA. = 334+26.84
 $\Delta = 12^\circ 44' 38''$ (RT)
 $D = 1^\circ 15' 00''$
 $R = 4,583.66'$
 $T = 511.87'$
 $L = 1,019.51'$
 $E = 28.49'$
 $e = 4\%$
 P.C. STA. = 329+14.98
 P.T. STA. = 339+34.49

NOTE:
 REMOVE OUTSIDE 1' OF WESTBOUND LANES
 FROM STA. 338+65.10 LT. TO 344+58.20 LT.

NOTE:
 REMOVE OUTSIDE 1' OF EASTBOUND LANES
 FROM STA. 339+49.68 RT. TO 344+58.20 RT.

LEGEND:

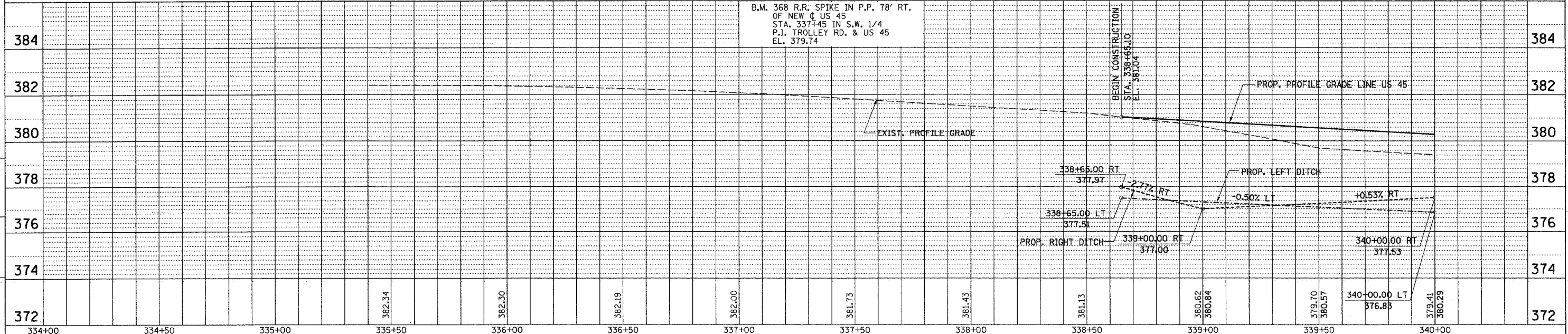
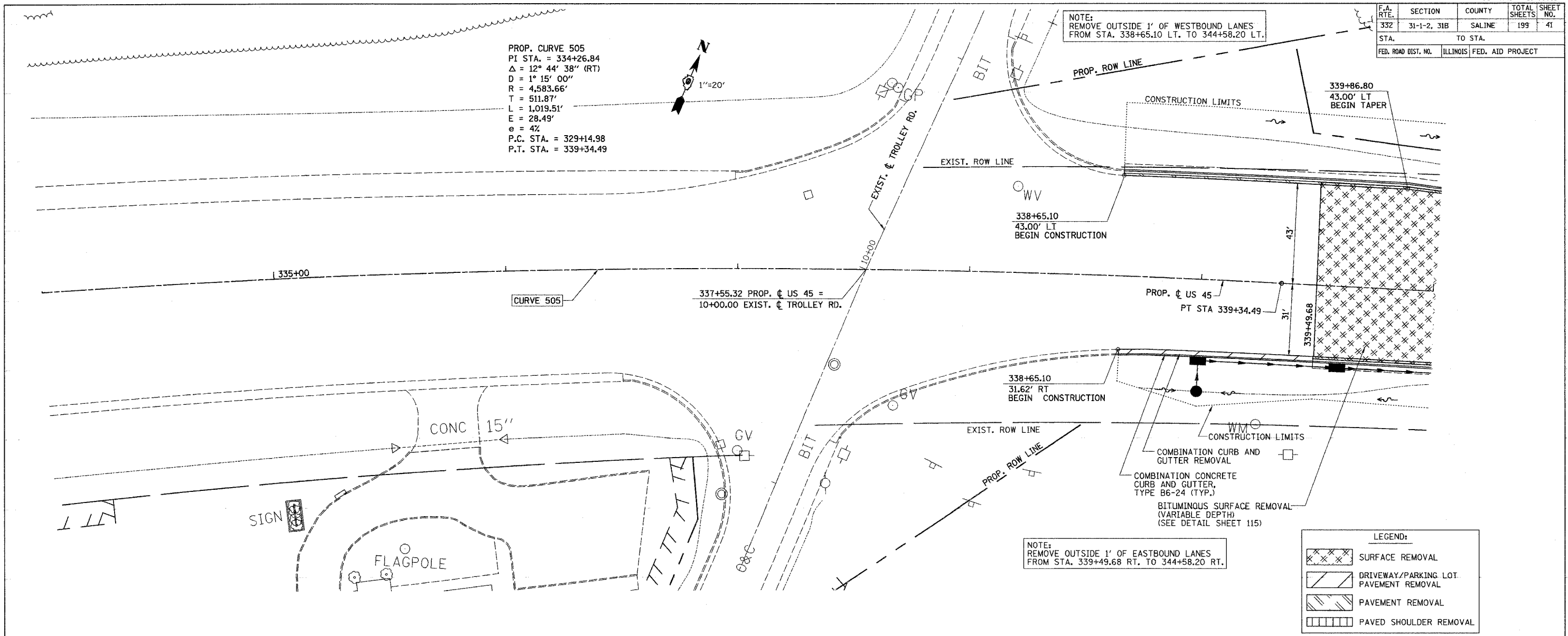
	SURFACE REMOVAL
	DRIVEWAY/PARKING LOT PAVEMENT REMOVAL
	PAVEMENT REMOVAL
	PAVED SHOULDER REMOVAL

DATE: 7/01
 DRAWN BY: [Signature]
 CHECKED BY: [Signature]
 PLAN: SURVEYED, PLOTTED, CHECKED, REVISIONS, NOTE BOOK NO., PAID FILE NAME

DATE: 7/01
 DRAWN BY: [Signature]
 CHECKED BY: [Signature]
 PLAN & PROFILE CHECKED BY: [Signature]
 DRAINAGE CHECKED BY: [Signature]

DATE: 7/01
 DRAWN BY: [Signature]
 CHECKED BY: [Signature]
 PROFILE: SURVEYED, PLOTTED, CHECKED, REVISIONS, NOTE BOOK NO., STRUCTURE NOTATIONS OFF

M:\PROJECTS\PROJ3536\ROADWAY\COMMON\Reference Files
 Active File: D92024.dgn



PLAN PROFILE - US 45 STA. 334+00 TO STA. 340+00