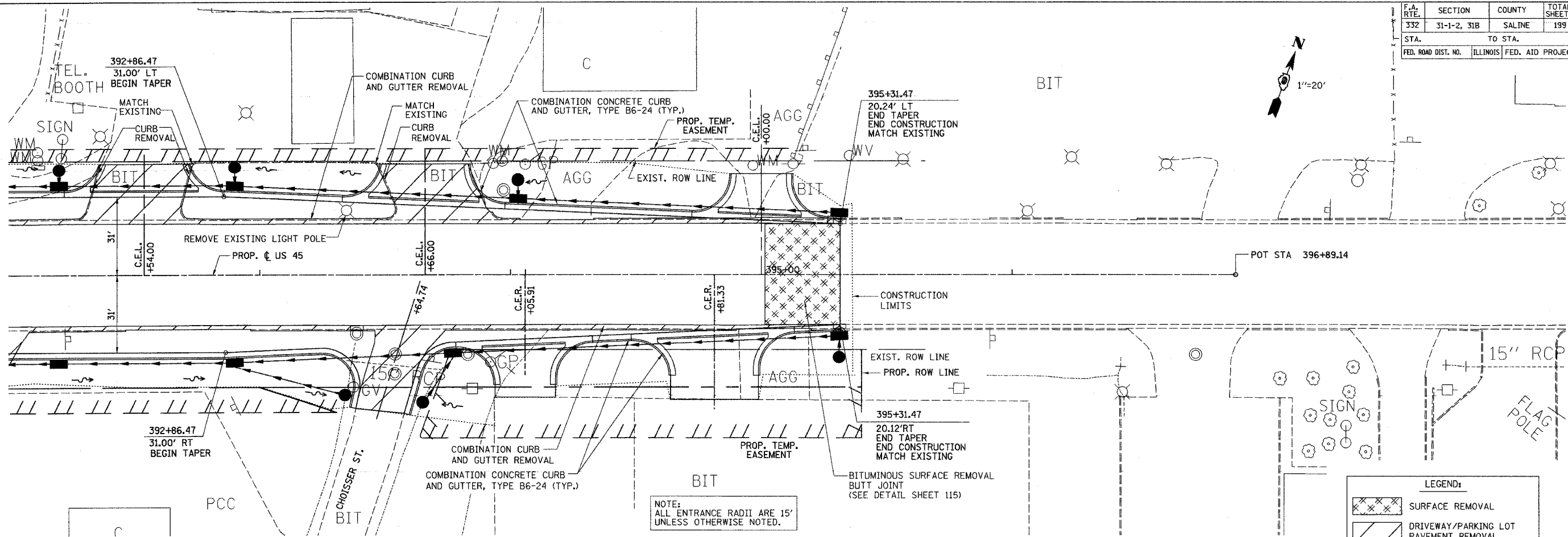
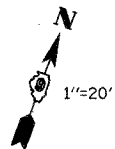


F.A. RTE.	SECTION	COUNTY	TOTAL SHEETS	SHEET NO.
332	31-1-2, 31B	SALINE	199	51
STA. TO STA.		ILLINOIS FED. AID PROJECT		



NOTE:  
ALL ENTRANCE RADII ARE 15'  
UNLESS OTHERWISE NOTED.

LEGEND:

	SURFACE REMOVAL
	DRIVEWAY/PARKING LOT PAVEMENT REMOVAL
	PAVEMENT REMOVAL
	PAVED SHOULDER REMOVAL

PLAN

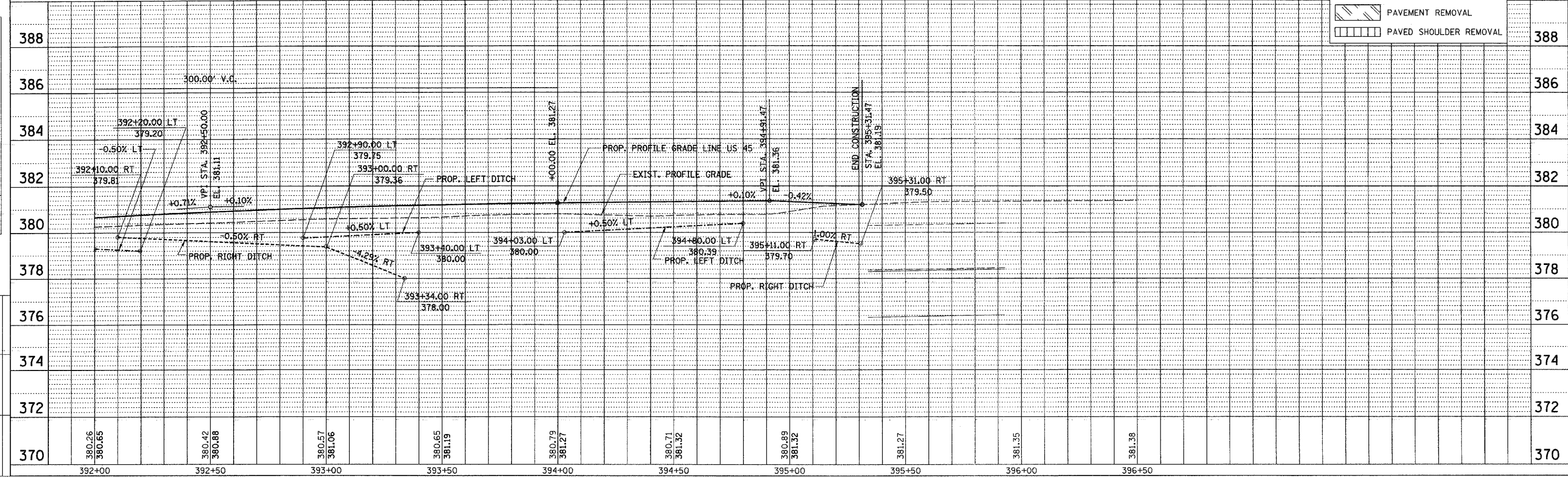
DATE	BY	REVISION
7/01	J.S.	1
7/01	J.S.	2
7/01	J.S.	3

PLAN & PROFILE CHECKED BY: DB  
DRAINAGE CHECKED BY: J.S.

PROFILE

DATE	BY	REVISION
7/01	J.S.	1
7/01	J.S.	2
7/01	J.S.	3

PROJECT: PROPOSED HIGHWAY VARIATION  
NO. 100  
DRAWN BY: J.S.



PLAN PROFILE - US 45 STA. 392+00 TO STA. 396+89.14